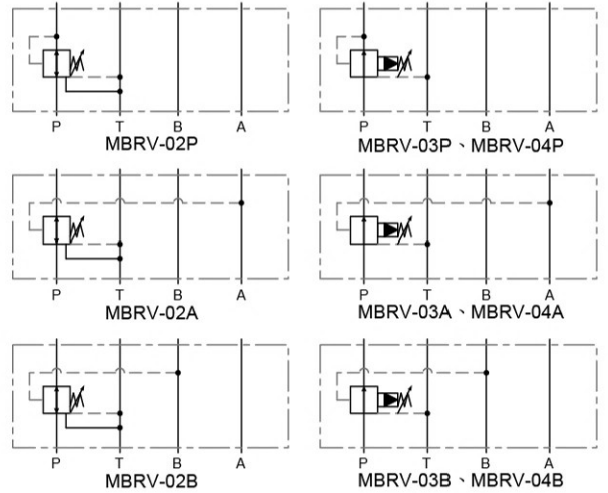


# 疊加式減壓閥 Reducing Modular Valves



## ■ 選購指南 HOW TO ORDER

MBRV - 02 P - A - L - 2H - 20						
系列編號 SERIES NUMBER	閥口徑 VALVE SIZE	作動型式 WORKING TYPE	壓力調整範圍 PRESSURE ADJ. RANGE MPa (kgf/cm <sup>2</sup> )	調整把手方向 HANDLE DIRECTION	調節部長度 ADJ. LENGTH	設計號 DESIGN NUMBER
<b>MBRV</b>	- 02 : 1/4"	<b>P</b> : P Port <b>A</b> : A Port <b>B</b> : B Port	- <b>A</b> : 0.3 (3) - 3.5 (35) - <b>B</b> : 0.7 (7) - 7 (70) - <b>C</b> : 3.5 (35) - 14 (140) - <b>H</b> : 7 (70) - 21 (210)	<b>NONE</b> (B Port) 標準型 Standard Type - <b>L</b> (A Port)	<b>NONE</b> : 95mm - <b>2H</b> : 125mm - <b>3H</b> : 155mm - <b>4H</b> : 195mm (詳如尺寸圖) Details as Specification Drawing	- <b>10</b> (標準型) Standard Type - <b>20</b> (調整把手直結型) Adj. Handle Type (20型為低底壓專用)
	- 03 : 3/8"		- <b>B</b> : 0.7(7) - 7(70) - <b>C</b> : 3.5(35) - 14(140) - <b>H</b> : 7(70) - 21(210)			
	- 04 : 1/2"					

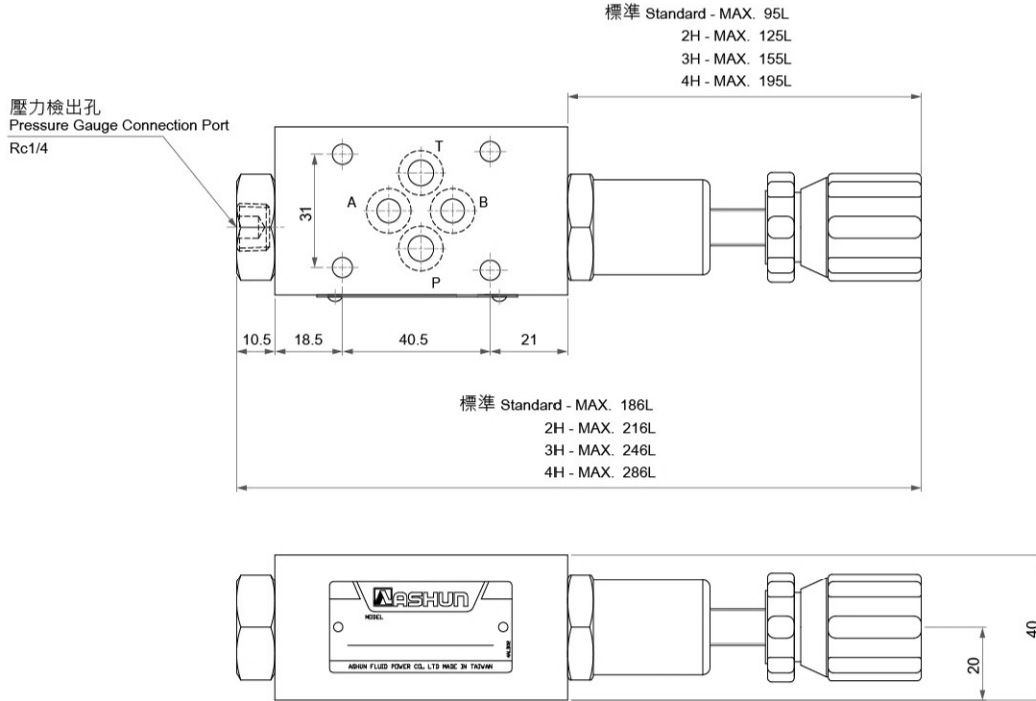
## ■ 規格說明 SPECIFICATIONS

型式 Model Series	最高使用壓力 Max. Operated Pressure MPa (kgf/cm <sup>2</sup> )	最大流量 Max. Flow (L/min)	重量 Weight (kg)
MBRV-02(P/A/B)	25 (250)	40	1.3
MBRV-03(P/A/B)		80	2.8
MBRV-04(P/A/B)		300	8.4

## 疊加式減壓閥 Reducing Modular Valves

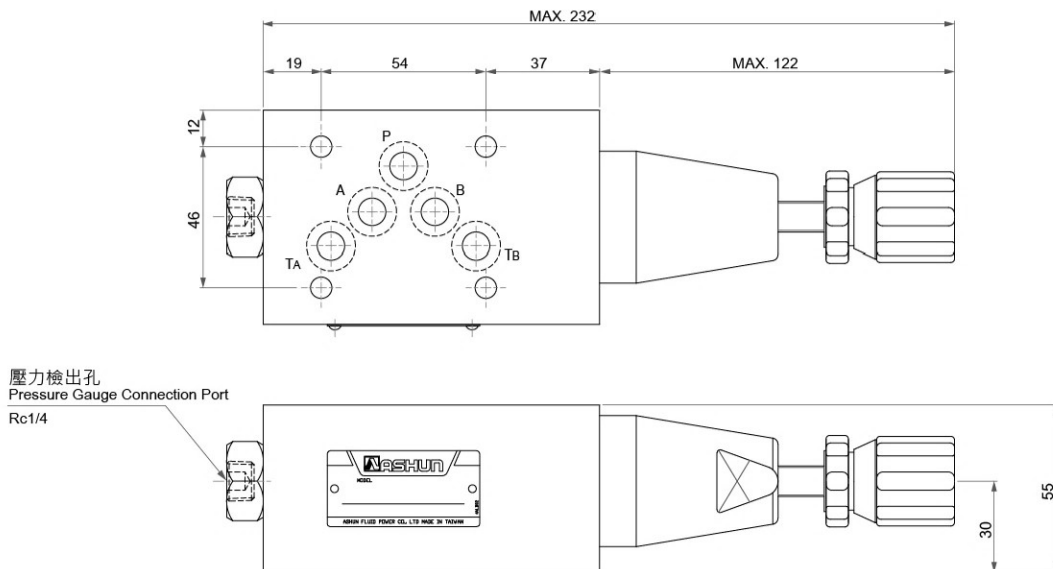
### ● MBRV-02(P/A/B)

安裝尺寸符合ISO4401-AB-03-4-A  
Mounting Surface:ISO4401-AB-03-4-A



### ● MBRV-03(P/A/B)

安裝尺寸符合ISO4401-AC-05-4-A  
Mounting Surface:ISO4401-AC-05-4-A



# 疊加式減壓閥 Reducing Modular Valves

安裝尺寸符合ISO4401-AD-07-4-A  
Mounting Surface:ISO4401-AD-07-4-A

## ● MBRV-04(P/A/B)

