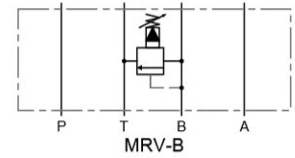
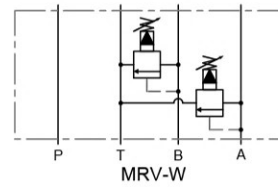
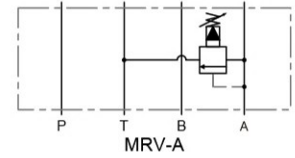
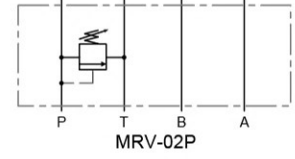
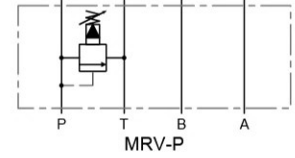


疊加式溢流閥 Relief Modular Valves



選購指南 HOW TO ORDER

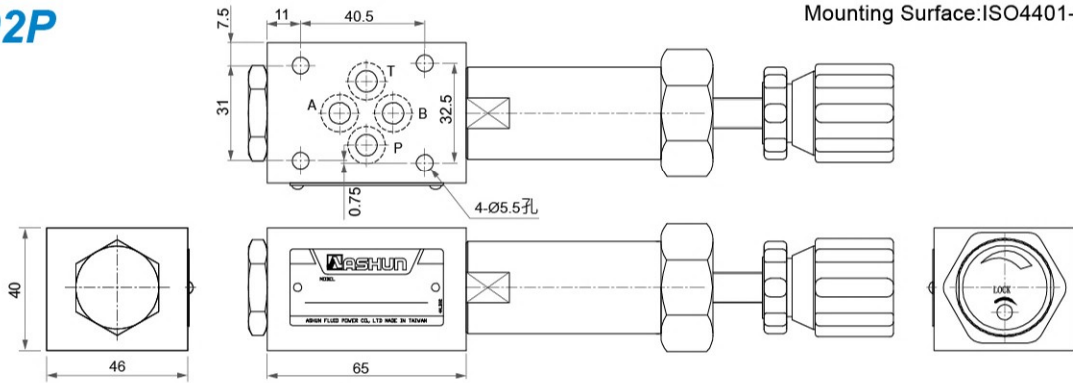
MRV	- 02	P	- C	- 20
系列編號 SERIES NUMBER	閥口徑 VALVE SIZE	作動型式 WORKING TYPE	壓力調整範圍 PRESSURE ADJ. RANGE MPa (kgf/cm ²)	設計號 DESIGN NUMBER
MRV	- 02 : 1/4"	P : P Port A : A Port B : B Port W : A & B Port	- C : 0.7 (7) - 14 (140) - H : 7 (70) - 21 (210)	- 20 (直動型) Straight Moving Type
	- 03 : 3/8"	P : P Port A : A Port B : B Port W : A & B Port	- B : 0.7(7) - 7(70) - C : 3.5(35) - 14(140) - H : 7(70) - 21(210)	- 10 (引導型) Booting Type
	- 04 : 1/2"	P : P Port A : A Port B : B Port		

規格說明 SPECIFICATIONS

型式 Model Series	最高使用壓力 Max. Operated Pressure MPa (kgf/cm ²)	最大流量 Max. Flow (L/min)	重量 Weight (kg)
MRV-02(P/A/B)	25 (250)	40	1.6
MRV-02W			2.6
MRV-03(P/A/B)		80	3.5
MRV-03W			4.74
MRV-04(P/A/B)		300	7.0

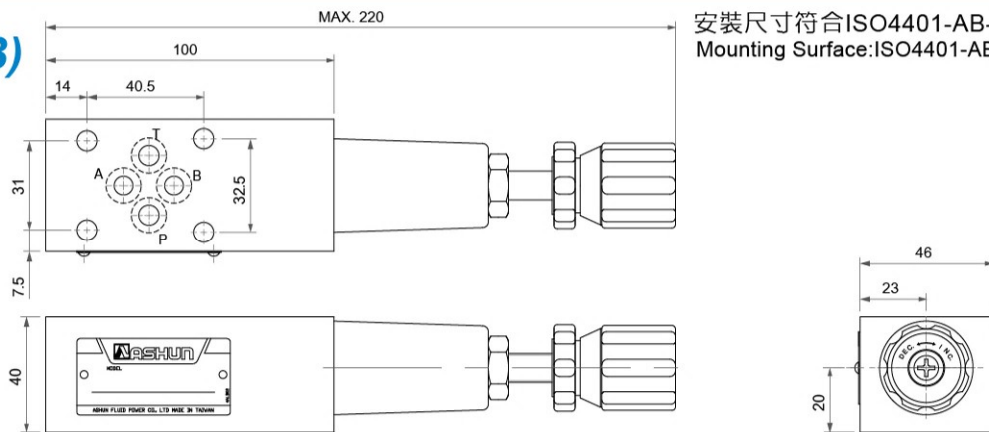
疊加式溢流閥 Relief Modular Valves

● MRV-02P



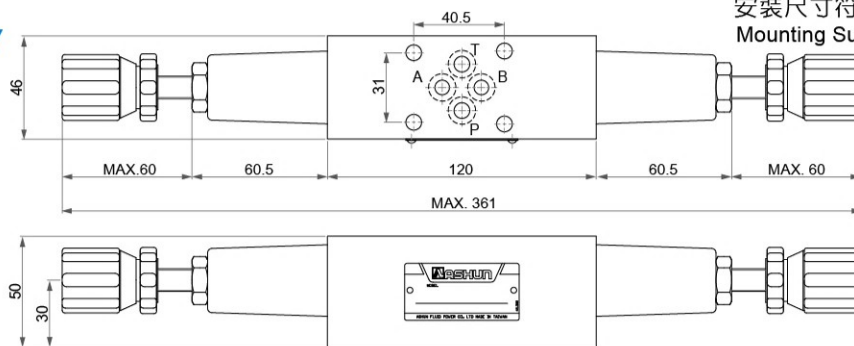
安裝尺寸符合ISO4401-AB-03-4-A
Mounting Surface:ISO4401-AB-03-4-A

● MRV-02(A/B)



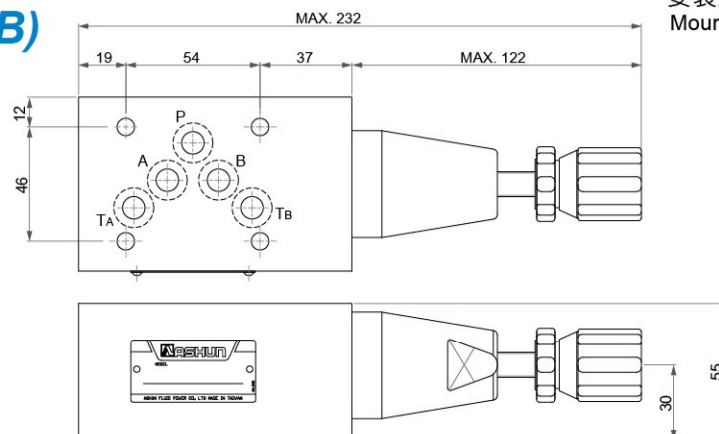
安裝尺寸符合ISO4401-AB-03-4-A
Mounting Surface:ISO4401-AB-03-4-A

● MRV-02W



安裝尺寸符合ISO4401-AB-03-4-A
Mounting Surface:ISO4401-AB-03-4-A

● MRV-03(P/A/B)

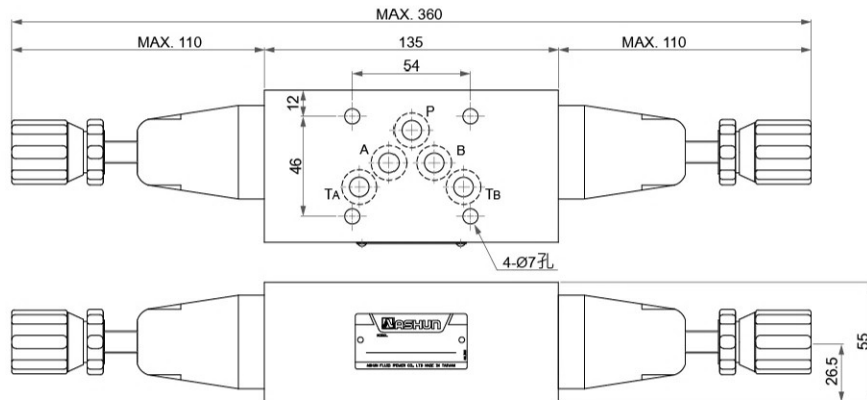


安裝尺寸符合ISO4401-AC-05-4-A
Mounting Surface:ISO4401-AC-05-4-A

疊加式溢流閥 Relief Modular Valves

● MRV-03W

安裝尺寸符合ISO4401-AC-05-4-A
Mounting Surface:ISO4401-AC-05-4-A



● MRV-04(P/A/B)

安裝尺寸符合ISO4401-AD-07-4-A
Mounting Surface:ISO4401-AD-07-4-A

