



壓鑄鋁合金方型氣壓缸採購指南 MT Series Pneumatic How to order (0.99Mpa)

鋁合金氣缸特性資料 Specification

氣壓缸內徑 Bore sizes of cylinder(mm)	Ø32	Ø40	Ø50	Ø63	Ø80	Ø100	
缸管材質 Material of cylinder barrel	鋁合金管 Aluminum alloy tubes						
使用壓力範圍 The range of pressure(MPa)	0.3-0.99MPa (3-9.9kgf/cm ²)						
使用溫度範圍 The range of temperature(c°)	NBR{-20°~+80°(C°)}/VITON{-10°~150°(C°)}						
使用速度範圍 The range of speed(mm/sec)	8~400 mm/sec						
標準衝程活塞(PM)的長度 Standard stroke of the piston (PM) length	23	23	23	26	26	26	
標準緩衝長度 Standard Cushion length	20	20	20	20	25	25	
各缸徑最大容許衝程 STROKE .mm Max.Permissible	本系列鋁管最長衝程為2000mm,如需更長衝程請來電洽詢						
衝程之容許公差/Tolerance of stroke	衝程/STROKE	100 以下	100~250	250~630	631~1000	1001~1600	1601以上
JIS B 8354 B級/Refer to Right Table	容許差/Tolerance	0~+0.8	0~+1.0	0~+1.25	0~+1.4	0~+1.6	0~+1.8
活塞螺紋加工精度/Accuracy of Threading at Rod End	JIS 6g/6H(相當JIS 2級)						

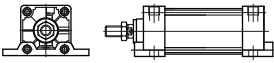
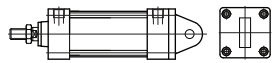


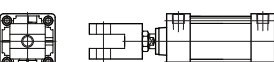
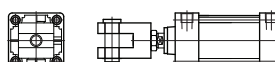
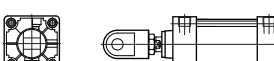
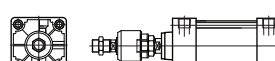
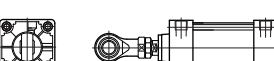
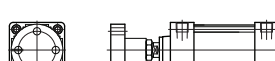


MT - B - N - 000 - A - A - 000 - N - 0000 - N - N - AST000 - N



1	型式 / TYPE	B: 標準型 B: Standard type		D: 雙軸型 D: Double-Rod type						
2	磁石/MAGNET	R: 內加磁石 N: 沒有 R: with magnet inside N: No symbol								
3	鋁管內徑/外徑 ALUMINUM TUBES	Ø32 / Ø37	Ø40 / Ø45	Ø50 / Ø55	Ø63 / Ø68	Ø80 / Ø86	Ø100 / Ø106			
備註:如採用鋼管時,標準處理內徑無電鍍處理,如需電鍍時請下單註明										
4	油封選用 SEAL SYMBOL 油封材質/Seal material	A	NBR 丁晴橡膠 Nitrile rubber		B	VITON 氟素橡膠 Fluoro elastomer				
5	入油口位置填入 Port position	前蓋端 Head	A:上(標準型)/B:右/C:下/D:左 A:UP(Standard)/B:Right/C:Down/D:Left				後蓋端 Cap	A:上(標準型)/B:右/C:下/D:左 A:UP(Standard)/B:Right/C:Down/D:Left		
A=AA / B=BB / C=CC / D=DD E=AB / F=AC / G=AD / H=BA I=BC / J=BD / K=CA / L=CB M=CD / N=DA / O=DB / P=DC										
6	軸心/ROD	標 準	Ø12	Ø16	Ø20	Ø20	Ø25	Ø25		
7	緩衝/CUSHION	A:標準緩衝 N:沒有 A: with cushion inside N: No symbol								
8	行程/STROKE	填入需要之衝程 Max Permissible stroke								
備註:本系列鋁管訂製最大衝程,內徑Ø32~Ø100衝程為2000mm,訂製衝程超過1000mm以上時,因考量活塞側向支撐力與繫緊柱子鎖固強度,建議活塞加長與追加中座,補強強度增加產品壽命,如有其他考量請參閱技術資料或敬請與我們相關人員洽詢										

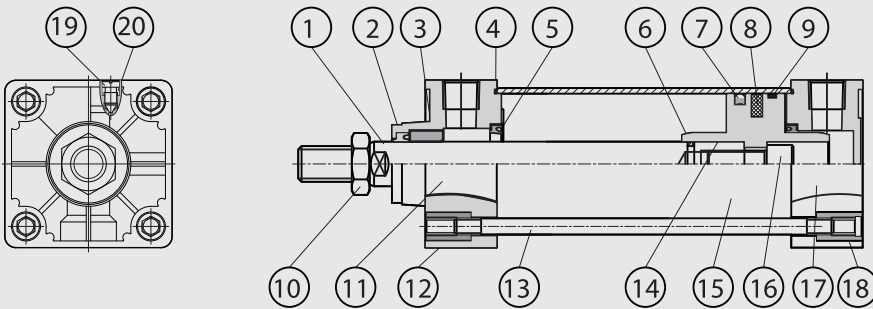
缸體 固定方式	名稱 DESCRIPTION	記號 SYMBOL	略 圖 CONFIGURATION	名稱 DESCRIPTION	記號 SYMBOL	略 圖 CONFIGURATION
BORE ACCESSORY	前蓋矩形法蘭 Rectangular flange at cylinder head	FA		後蓋矩形法蘭 Rectangular flange at cylinder cap	FB	
	前後端凸耳形 Foot mounting side end angles	LB		中間固定 耳軸形 Centre trunnion mounting	TC	

鋁合金氣缸特性資料 Specification

9	缸體 固定方式 BORE ACCESSORY	名稱 DESCRIPTION	記號 SYMBOL	略圖 CONFIGURATION	名稱 DESCRIPTION	記號 SYMBOL	略圖 CONFIGURATION
		中間固定 支撐形 Centre trunnion mounting	LA		後蓋可拆 單山型 Plate clevis at cylinder cap	CA	
		後蓋可拆 雙山型 Clevis fork at cylinder cap	CB		後蓋可拆 雙山型+插銷 Clevis fork at cylinder cap with pin	CBP	
		備註：缸體固定如有其它方式，可繪製草圖或與我們營業人員洽詢 Note: If the cylinder is fixed in other ways, you can draw a sketch or contact our sales staff					
10	軸心 用配件 ROD ACCESSORY	名稱 DESCRIPTION	記號 SYMBOL	略圖 CONFIGURATION	名稱 DESCRIPTION	記號 SYMBOL	略圖 CONFIGURATION
		Y型接頭 Rod Clevis	TY		Y型接頭附 插銷 Rod Clevis With Pin	TYP	
		I型接頭 I Rod end mounting	MI		浮動接頭 Compensating Joint	KG	
		魚眼接頭 Oscillating Eye	PH		T型接頭 T Rod end mounting	MT	
		焊接接頭 H Rod end mounting	MH		可調螺帽 Adjustable nut	AST	
備註：軸心固定如有其它方式，可繪製草圖或與我們營業人員洽詢 Note: If the axis is fixed in other ways, you can draw a sketch or contact our sales staff							
	雙軸 可調行程	填入需要的可調行程 AST <input type="text"/> <input type="text"/> <input type="text"/> mm 無記號:沒有 / NO Symbol Adjustable Stroke					
	近接開關 SENSOR SWITCH	無記號:無裝置(標準型)/B:兩端近接開關/X:近接在前/Y:近接在後/T:近接*3/U:近接*4 N:NO symbol /B:Double side sensor switch/X:Rod-cover side sensor switch/ Y:Cap-cover side sensor switch/T:sensor switch*3/U:sensor switch*4					

MTBR

壓鑄鋁合金氣缸柱子型結構圖
Inside Structure and Parts List



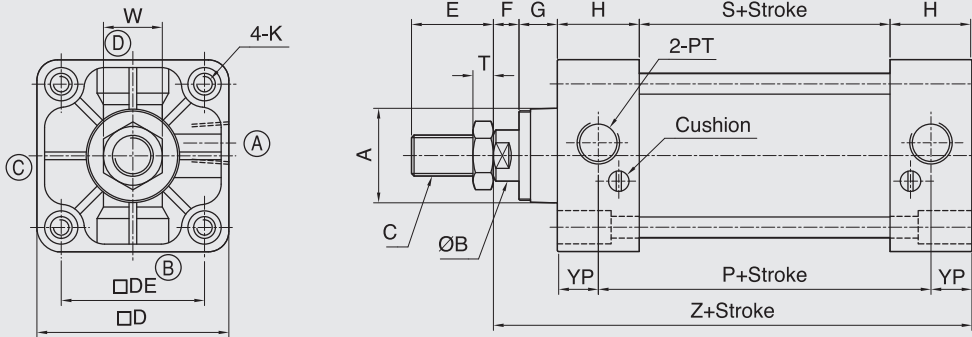
NO	零件名 Part mane	數量 Quantity	NO	零件名 Part mane	數量 Quantity	NO	零件名 Part mane	數量 Quantity
1	活塞桿 Piston rod	1	8	磁石 Magnet	1	15	氣缸本體 Cylinder tube	1
2	刮塵環 Dust wiper	1	9	耐磨環 Wearing ring	1	16	螺絲 Screws	1
3	含油軸承 Oilless bearing	1	10	軸心螺帽 Rod nut	1	17	後蓋 End cover	1
4	□型環 Cylinder gasket	2	11	前蓋 Rod cover	1	18	繫緊螺帽B Tie nut B	4
5	緩衝橡皮 Cushion packing	2	12	繫緊螺帽A Tie nut A	4	19	緩衝針 Cushion needle	2
6	□型環 Cylinder gasket	1	13	繫緊螺絲 Tie bolt	4	20	□型環 Gasket	2
7	橡膠活塞環 Piston packing	1	14	活塞本體 Piston	1	21		

Ref. MA HA MT MTH SR MR MI, MK Pneu. accessories MO HO FO SO RO CRO HRO HSO accessories

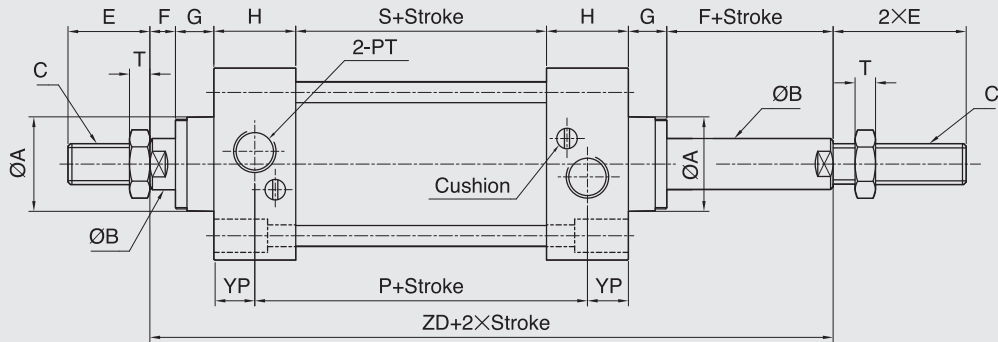
MT-B,D Series

壓鑄鋁合金方型壓缸標準尺寸圖 MT Series Dimensional Features(0.99Mpa)

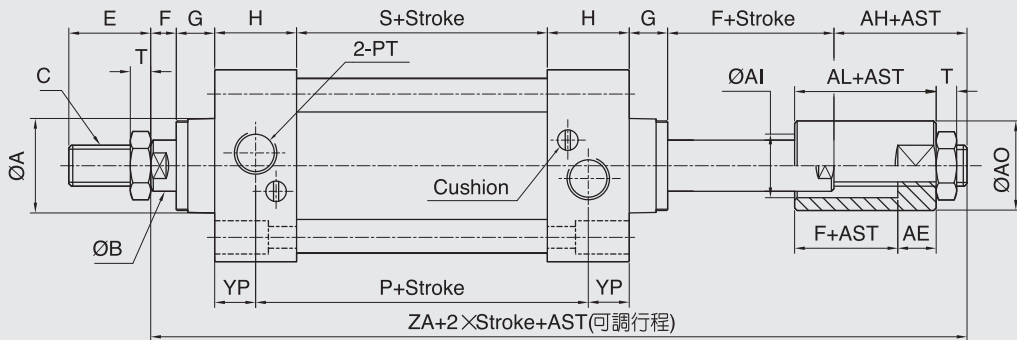
MTB MT+B (標準型) TYPE



MTD MT+D (雙軸型) TYPE



MPD MTD+AST (雙軸型附可調帽) TYPE



MTB-MTD TYPE

A (可調帽) TYPE

BORE	SIZE	ØA	ØB	C	□D	□DE	E	F	G	H	P	PM	PT	YP	K	W	T	S	Z	ZA	ZD	AH	AE	ØAI	ØAO	AL
Ø32	Ø28	Ø12	M10XP1.25	44	33	22	10	15	32	61	23	1/8	16	M6XP1.0	17	8	29	118	163	143	20	10	16	25	20	
Ø40	Ø32	Ø16	M12XP1.25	50	37	24	10	15	32	61	23	1/4	16	M6XP1.0	19	8	29	118	168	143	25	15	20	30	25	
Ø50	Ø38	Ø20	M16XP1.5	62	47	32	10	15	32	61	23	1/4	16	M6XP1.0	24	8	29	118	168	143	25	15	25	35	25	
Ø63	Ø38	Ø20	M16XP1.5	75	56	32	10	15	32	64	26	3/8	16	M8XP1.25	24	8	32	121	171	146	25	15	25	35	25	
Ø80	Ø47	Ø25	M20XP1.5	94	70	40	14	21	38	68	26	3/8	20	M10XP1.25	29	9	32	143	208	178	30	20	30	40	35	
Ø100	Ø47	Ø25	M20XP1.5	112	84	40	14	21	38	68	26	1/2	20	M10XP1.25	29	9	32	143	208	178	30	20	30	40	35	

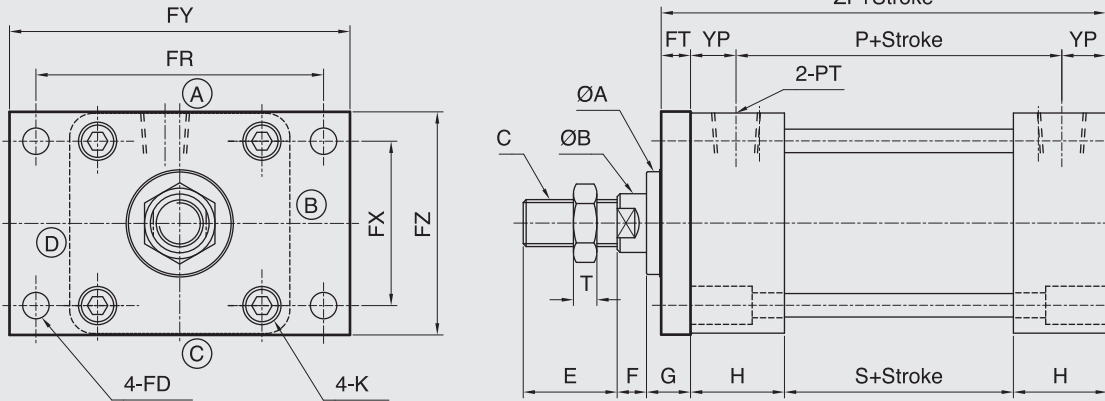
備註:

- 1.本系列符合ISO國際標準規格。
- 2.本系列行程超過1500mm(含)以上時,活塞(PM)長度須加倍長(尺寸P,S,Z,ZA,ZD須再加PM尺寸長度乙次)。
- 3.本系列行程超過2000mm(含)以上時,須加拉桿中間固定座(MPB系列不包含)。
- 4.AST 為客戶指定之可調行程。

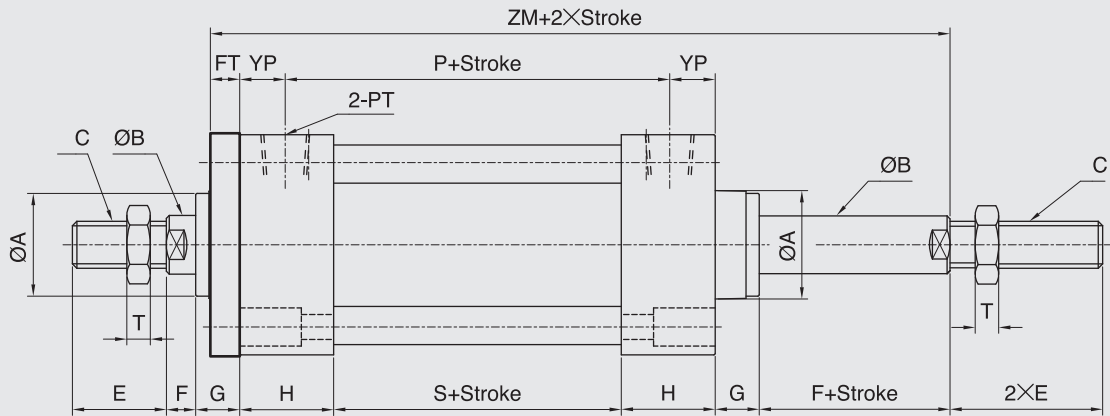
- 1.ISO registered of standard specification.
- 2.The series stroke exceed (includes) 1500mm, should redouble length (PM) of piston.
(Add twice length PM of size:P,S,Z,ZA,ZD).
- 3.When this series of stroke exceeds(includes) 2000mm,the fixed base of the pull rod must be added in the middle.(But series MPB not be included)
- 4.AST:Adjustable stroke by customer assigment.

壓鑄鋁合金方型氣壓缸FA板尺寸圖 MT Series FA Dimensional Features(0.99Mpa)

MTB MTB+FA TYPE



MTD MTD+FA TYPE



MTB-MT(P/D) TYPE

FA TYPE

BORE	SIZE	ØA	ØB	C	E	F	G	H	P	PM	PT	PY	K	T	S	ZF	ZM	ØFD	FT	FR	FX	FY	FZ
Ø32	Ø28	Ø12	M10XP1.25	22	10	15	32	61	23	1/8	16	M6XP1.0	8	29	103	128	Ø7	10	58	33	72	47	
Ø40	Ø32	Ø16	M12XP1.25	24	10	15	32	61	23	1/4	16	M6XP1.0	8	29	103	128	Ø7	10	70	36	84	52	
Ø50	Ø38	Ø20	M16XP1.5	32	10	15	32	61	23	1/4	16	M6XP1.0	8	29	103	128	Ø9	10	86	47	104	65	
Ø63	Ø38	Ø20	M16XP1.5	32	10	15	32	64	26	3/8	16	M8XP1.25	8	32	106	131	Ø9	10	98	56	116	76	
Ø80	Ø47	Ø25	M20XP1.5	40	14	21	38	68	26	3/8	20	M10XP1.25	9	32	124	159	Ø12	16	119	70	143	95	
Ø100	Ø47	Ø25	M20XP1.5	40	14	21	38	68	26	1/2	20	M10XP1.25	9	32	124	159	Ø12	16	138	84	162	115	

備註:

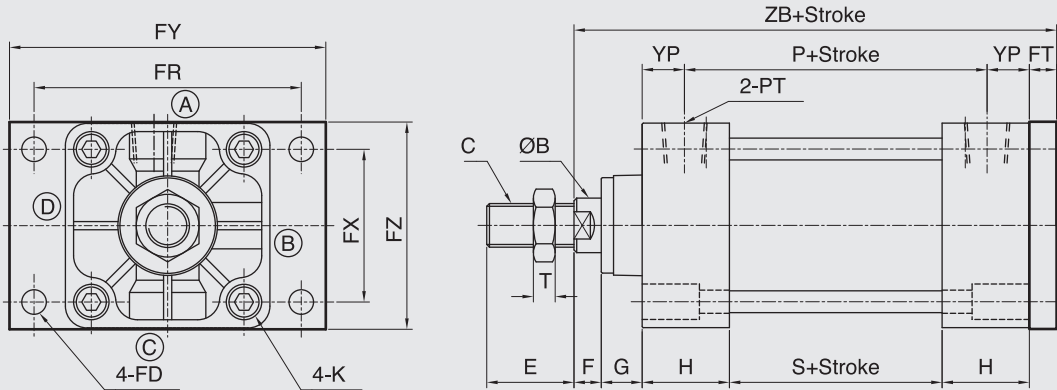
- 1.本系列符合ISO國際標準規格。
- 2.本系列行程超過1500mm(含)以上時,活塞(PM)長度須加倍長(尺寸P,S,ZF,ZM須再加PM尺寸長度乙次)。
- 3.本系列行程超過2000mm(含)以上時,須加拉桿中間固定座。

- 1.ISO registered of standard specification.
- 2.The series stroke exceed (includes) 1500mm, should redouble length (PM) of piston. (Add twice length PM of size:P,S,ZF,ZM).
- 3.When this series of stroke exceeds(includes) 2000mm,the fixed base of the pull rod must be added in the middle.

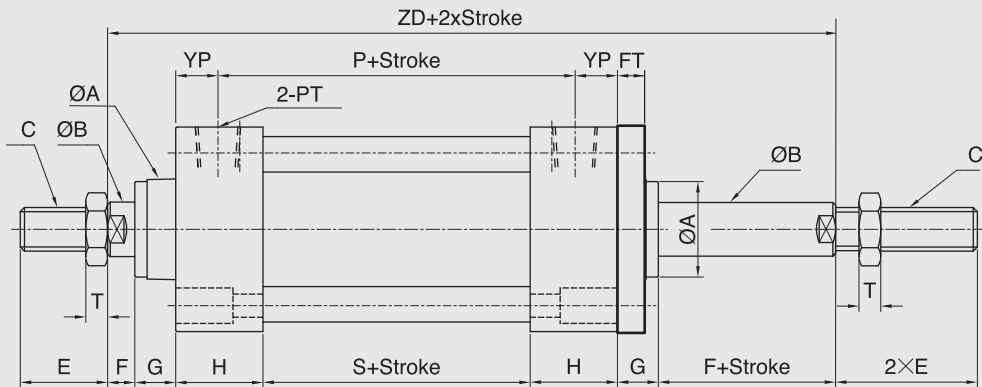
MT-FB Series

壓鑄鋁合金方型氣壓缸FB板尺寸圖 MT Series FB Dimensional Features(0.99Mpa)

MTB MTB+FB TYPE



MTD MTD+FB TYPE



BORE	SIZE	MTB-MTD TYPE													FB TYPE						
		ØA	ØB	C	E	F	G	H	P	PM	PT	PY	K	T	S	ZB	ZD	ØFD	FT	FR	FX
Ø32	Ø12	M10XP1.25	22	10	15	32	61	23	1/8	16	M6XP1.0	8	29	128	143	Ø7	10	58	33	72	47
Ø40	Ø16	M12XP1.25	24	10	15	32	61	23	1/4	16	M6XP1.0	10	29	128	143	Ø7	10	70	36	84	52
Ø50	Ø20	M16XP1.5	32	10	15	32	61	23	1/4	16	M6XP1.0	8	29	128	143	Ø9	10	86	47	104	65
Ø63	Ø20	M16XP1.5	32	10	15	32	64	26	3/8	16	M8XP1.25	8	32	131	146	Ø9	10	98	56	116	76
Ø80	Ø25	M20XP1.5	40	14	21	38	68	26	3/8	20	M10XP1.25	9	32	159	178	Ø12	16	119	70	143	95
Ø100	Ø25	M20XP1.5	40	14	21	38	68	26	1/2	20	M10XP1.25	9	32	159	178	Ø12	16	138	84	162	115

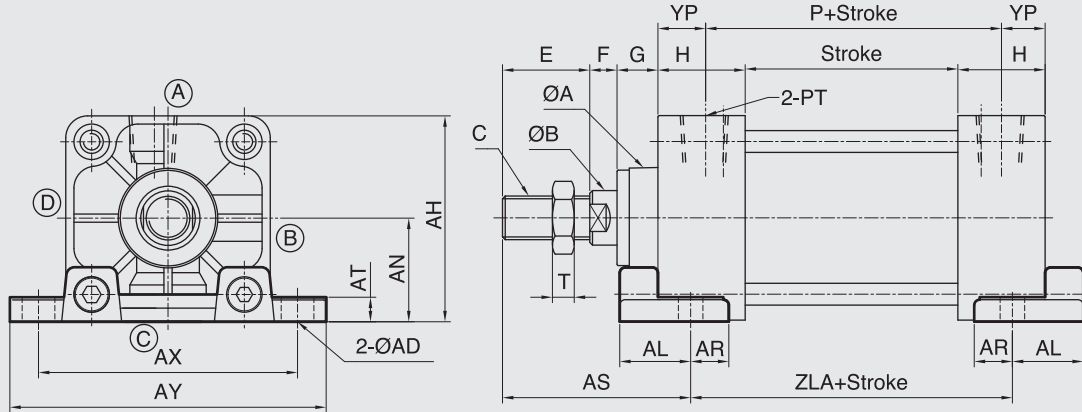
備註:

- 1.本系列符合ISO國際標準規格。
- 2.本系列行程超過1500mm(含)以上時,活塞(PM)長度須加倍長(尺寸P,S,ZB,ZD須再加PM尺寸長度乙次)。
- 3.本系列行程超過2000mm(含)以上時,須加拉桿中間固定座。

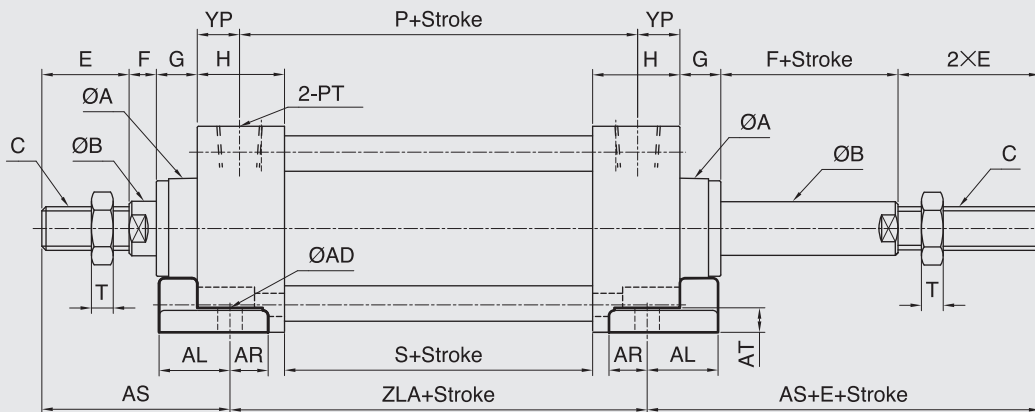
- 1.ISO registered of standard specification.
- 2.The series stroke exceed (includes) 1500mm, should redouble length (PM) of piston. (Add twice length PM of size:P,S,ZB,ZD).
- 3.When this series of stroke exceeds(includes) 2000mm,the fixed base of the pull rod must be added in the middle.

壓鑄鋁合金方型氣壓缸LA尺寸圖 MT Series LA Dimensional Features(0.99Mpa)

MTB MTB+LA TYPE



MTD MTD+LA TYPE



MTB-MTD TYPE

LA TYPE

BORE	SIZE	ØA	ØB	C	E	F	G	H	P	PM	PT	YP	K	T	S	AS	ZAL	ØAD	AH	AL	AN	AR	AT	AX	AY
Ø32	Ø28	Ø12	M10XP1.25	22	10	15	32	61	23	1/8	16	M6XP1.0	8	29	55	77	Ø9	44	22	22	14	8	63	80	
Ø40	Ø32	Ø16	M12XP1.25	24	10	15	32	61	23	1/4	16	M6XP1.0	8	29	57	77	Ø12	50	22	25.5	14	8	70	91	
Ø50	Ø38	Ø20	M16XP1.5	32	10	15	32	61	23	1/4	16	M6XP1.0	8	29	67	73	Ø12	62	24	31	14	8	83	104	
Ø63	Ø38	Ø20	M16XP1.5	32	10	15	32	64	26	3/8	16	M8XP1.25	8	32	69	72	Ø12	76	26	38	14	9	95	116	
Ø80	Ø47	Ø25	M20XP1.5	40	14	21	38	68	26	3/8	20	M10XP1.25	9	32	88	82	Ø14	94	33	47	18	12	121	146	
Ø100	Ø47	Ø25	M20XP1.5	40	14	21	38	68	26	1/2	20	M10XP1.25	9	32	92	74	Ø14	114	37	57	18	14	140	165	

備註:

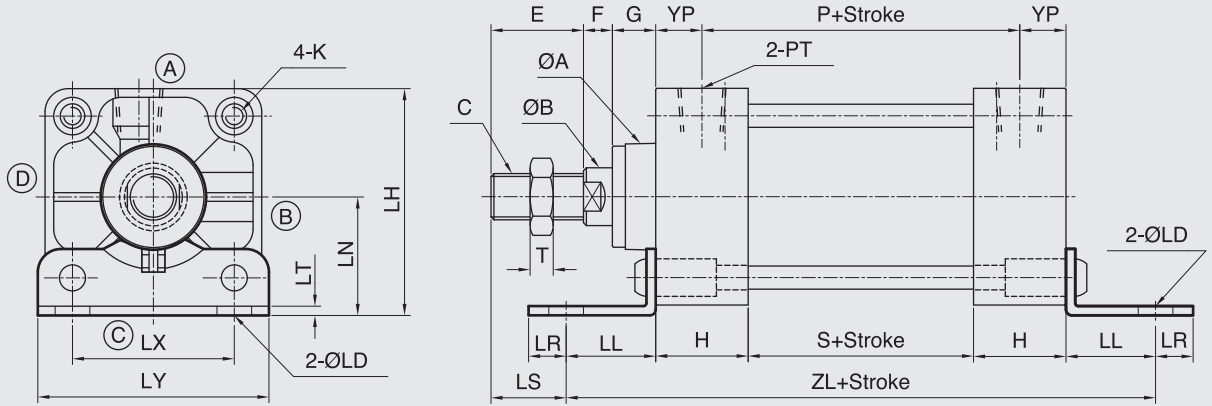
- 1.本系列符合ISO國際標準規格。
- 2.本系列行程超過1500mm(含)以上時, 活塞(PM)長度須加倍長(尺寸P,S,ZAL須再加PM尺寸長度乙次)。
- 3.本系列行程超過2000mm(含)以上時, 須加拉桿中間固定座。

- 1.ISO registered of standard specification.
- 2.The series stroke exceed (includes) 1500mm, should redouble length (PM) of piston.
(Add twice length PM of size:P,S,ZAL).
- 3.When this series of stroke exceeds(includes) 2000mm,the fixed base of the pull rod must be added in the middle.

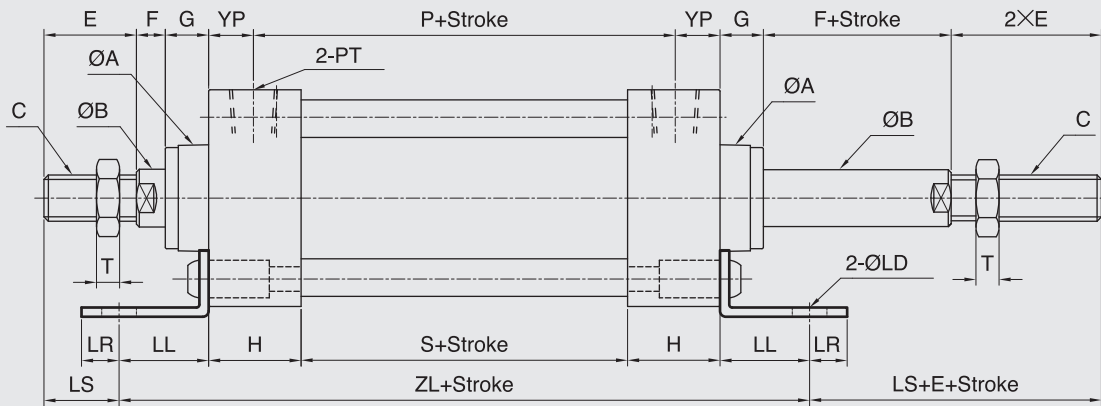
MT-LB Series

壓鑄鋁合金方型氣壓缸LB架尺寸圖 MT Series LB Dimensional Features(0.99Mpa)

MTB MTB+LB TYPE



MTD MTD+LB TYPE



BORE	SIZE	MTB-MTD TYPE														LB TYPE								
		ØA	ØB	C	E	F	G	H	LS	P	PM	PT	YP	K	T	S	ZL	ØLD	LH	LL	LN	LR	LT	LX
Ø32	Ø28	Ø12	M10XP1.25	22	10	15	32	26.5	61	23	1/8	16	M6XP1.0	8	29	134	Ø9	50	20.5	28	9.5	3.2	33	50
Ø40	Ø32	Ø16	M12XP1.25	24	10	15	32	25.5	61	23	1/4	16	M6XP1.0	8	29	140	Ø12	55	23.5	30	12.5	3.2	36	57
Ø50	Ø38	Ø20	M16XP1.5	32	10	15	32	29	61	23	1/4	16	M6XP1.0	8	29	149	Ø12	67.5	28	36.5	12	3.2	47	68
Ø63	Ø38	Ø20	M16XP1.5	32	10	15	32	26	64	26	3/8	16	M8XP1.25	8	32	158	Ø12	79	31	41	13	3.2	56	80
Ø80	Ø47	Ø25	M20XP1.5	40	14	21	38	45	68	26	3/8	20	M10XP1.25	9	32	168	Ø14	96	30	49	16	4	70	97
Ø100	Ø47	Ø25	M20XP1.5	40	14	21	38	45	68	26	1/2	20	M10XP1.25	9	32	168	Ø14	114	30	57	16	4	84	112

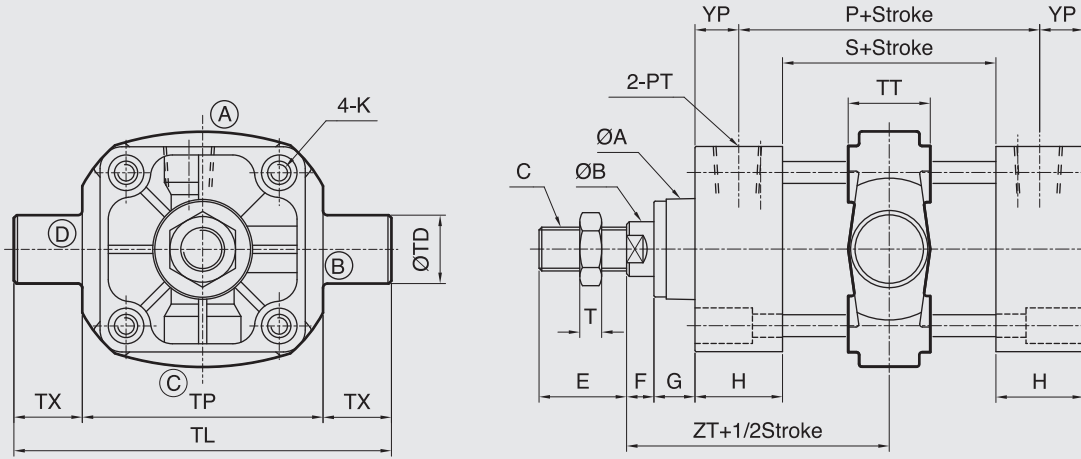
備註:

- 1.本系列符合ISO國際標準規格。
- 2.本系列行程超過1500mm(含)以上時, 活塞(PM)長度須加倍長(尺寸P,S,ZL須再加PM尺寸長度乙次)。
- 3.本系列行程超過2000mm(含)以上時, 須加拉桿中間固定座。

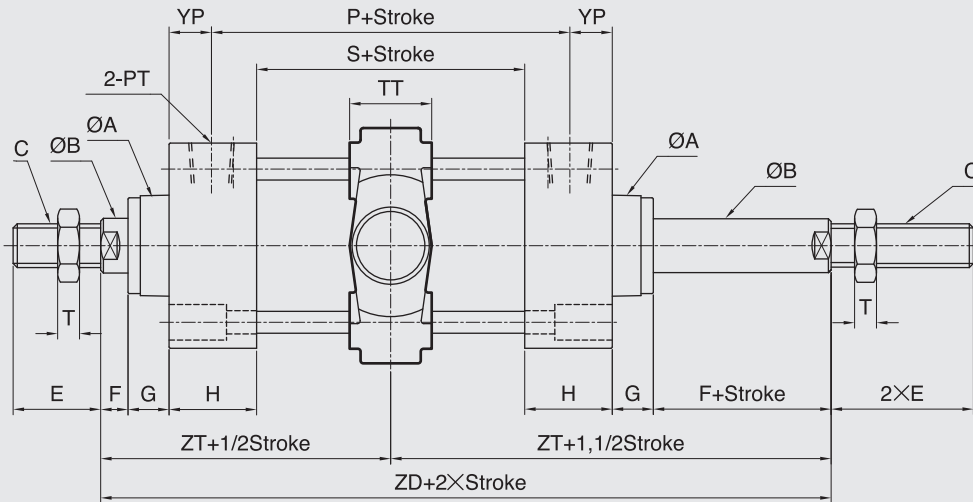
- 1.ISO registered of standard specification.
- 2.The series stroke exceed (includes) 1500mm, should redouble length (PM) of piston. (Add twice length PM of size:P,S,ZL).
- 3.When this series of stroke exceeds(includes) 2000mm,the fixed base of the pull rod must be added in the middle.

壓鑄鋁合金方型氣壓缸TC尺寸圖
MT Series TC Dimensional Features(0.99Mpa)

MTB MTB+TC TYPE



MTD MTD+TC TYPE



MTB-MTD TYPE

TC TYPE

BORE	SIZE	ØA	ØB	C	E	F	G	H	P	PM	PT	YP	K	T	S	ZT	ZD	TL	TP	TT	ØTD	TX
Ø32	Ø28	Ø12	M10XP1.25	22	10	15	32	61	23	1/8	16	M6XP1.0	8	29	71.5	143	87	55	30	16	16	
Ø40	Ø32	Ø16	M12XP1.25	24	10	15	32	61	23	1/4	16	M6XP1.0	8	29	71.5	143	113	63	30	25	25	
Ø50	Ø38	Ø20	M16XP1.5	32	10	15	32	61	23	1/4	16	M6XP1.0	8	29	71.5	143	126	76	30	25	25	
Ø63	Ø38	Ø20	M16XP1.5	32	10	15	32	64	26	3/8	16	M8XP1.25	8	32	73	146	138	88	30	25	25	
Ø80	Ø47	Ø25	M20XP1.5	40	14	21	38	68	26	3/8	20	M10XP1.25	9	32	89	178	164	114	35	25	25	
Ø100	Ø47	Ø25	M20XP1.5	40	14	21	38	68	26	1/2	20	M10XP1.25	9	32	89	178	182	132	40	25	25	

備註:

- 1.本系列符合ISO國際標準規格。
- 2.本系列行程超過1500mm(含)以上時,活塞(PM)長度須加倍長(尺寸P,S,ZT,ZD須再加PM尺寸長度乙次)。

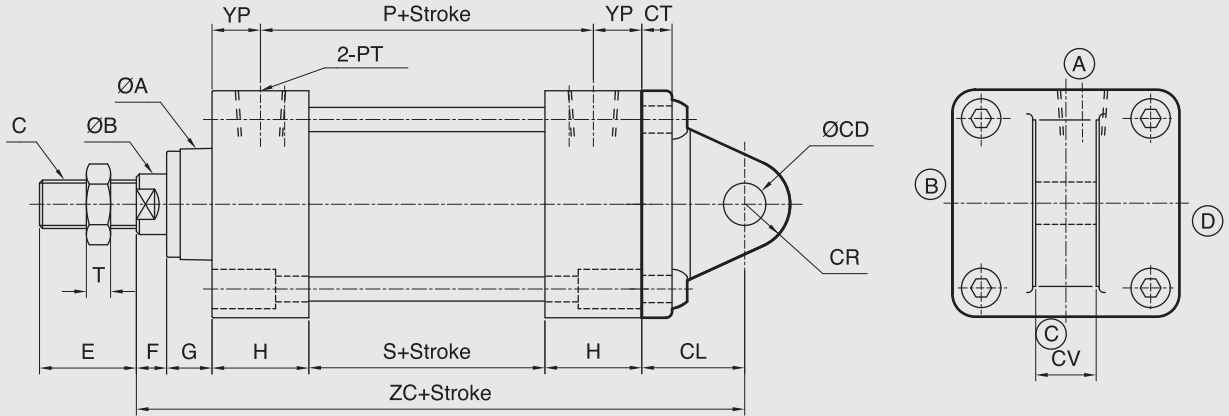
- 1.ISO registered of standard specification.
- 2.The series stroke exceed (includes) 1500mm, should redouble length (PM) of piston. (Add twice length PM of size:P,S,ZT,ZD).

MT-CA, CB

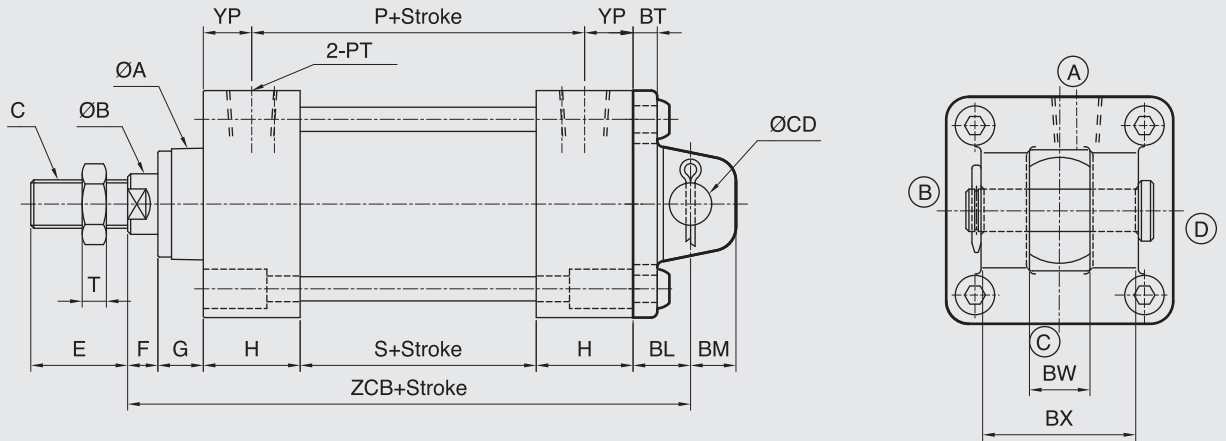
Series

壓鑄鋁合金方型氣壓缸CA, CB尺寸圖 MT Series CA, CB Dimensional Features(0.99Mpa)

MTB MTB+CA TYPE



MTB MTB+CB TYPE



MTB TYPE														CA TYPE				CB TYPE								
BORE	SIZE	$\varnothing A$	$\varnothing B$	C	E	F	G	H	P	PM	PT	YP	T	S	ZCB	ZC	$\varnothing CD$	CL	CR	CT	CV	BL	BM	BT	BW	BX
$\varnothing 32$	$\varnothing 28$	$\varnothing 12$	M10XP1.25	22	10	15	32	61	23	1/8	16	8	29	139	139	$\varnothing 12$	21	14	8	16	21	11	8	16	32	
$\varnothing 40$	$\varnothing 32$	$\varnothing 16$	M12XP1.25	24	10	15	32	61	23	1/4	16	10	29	137	152	$\varnothing 14$	34	14	10	20	19	13	8	20	44	
$\varnothing 50$	$\varnothing 38$	$\varnothing 20$	M16XP1.5	32	10	15	32	61	23	1/4	16	8	29	137	152	$\varnothing 14$	34	15	10	20	19	15	8	20	52	
$\varnothing 63$	$\varnothing 38$	$\varnothing 20$	M16XP1.5	32	10	15	32	64	26	3/8	16	8	32	140	155	$\varnothing 14$	34	15	10	20	19	15	8	20	52	
$\varnothing 80$	$\varnothing 47$	$\varnothing 25$	M20XP1.5	40	14	21	38	68	26	3/8	20	9	32	175	191	$\varnothing 20$	48	20	14	32	32	21	11	32	64	
$\varnothing 100$	$\varnothing 47$	$\varnothing 25$	M20XP1.5	40	14	21	38	68	26	1/2	20	9	32	175	191	$\varnothing 20$	48	20	14	32	32	21	11	32	64	

備註:

- 1.本系列符合ISO國際標準規格。
- 2.本系列行程超過1500mm(含)以上時,活塞(PM)長度須加倍長(尺寸P,S,ZC,ZCB須再加PM尺寸長度乙次)。
- 3.本系列行程超過2000mm(含)以上時,須加拉桿中間固定座。

- 1.ISO registered of standard specification.
- 2.The series stroke exceed (includes) 1500mm, should redouble length (PM) of piston. (Add twice length PM of size:P,S,ZC,ZCB).
- 3.When this series of stroke exceeds(includes) 2000mm,the fixed base of the pull rod must be added in the middle.