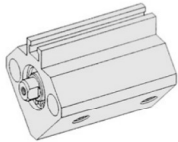


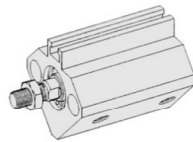
YC(D)Q2 Series

Compact Cylinder

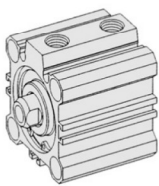
- In Magnet, Without Magnet
- Female(Standard), Male Thread



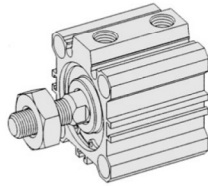
YQ2B-12x5D~YQ2B-12x30D
YCDQ2B-12x5D~YCDQ2B-12x30D
(ϕ 12, ϕ 16, ϕ 20, ϕ 25)



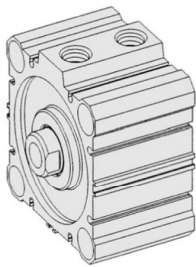
YQ2B-12x5DM~YQ2B-12x30DM
YCDQ2B-12x5DM~YCDQ2B-12x30DM
(ϕ 12, ϕ 16, ϕ 20, ϕ 25)



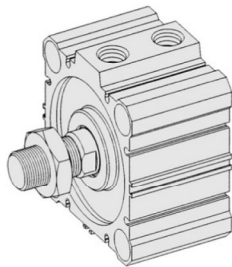
YQ2B-32x5D~YQ2B-32x50D
YCDQ2B-32x5D~YCDQ2B-32x50D
(ϕ 32, ϕ 40)



YQ2B-32x5DM~YQ2B-32x50DM
YCDQ2B-32x5DM~YCDQ2B-32x50DM
(ϕ 32, ϕ 40)



YQ2B-50x10D~YQ2B-50x50D
YCDQ2B-50x10D~YCDQ2B-50x50D
(ϕ 50, ϕ 63, ϕ 80)



YQ2B-50x10DM~YQ2B-50x50DM
YCDQ2B-50x10DM~YCDQ2B-50x50DM
(ϕ 50, ϕ 63, ϕ 80)

SPECIFICATION

Fluids	Air
Certified Pressure	15bar
Maximum Operation Pressure	10bar
Minimum Operation Pressure	0.5bar (ϕ 12, ϕ 16 : 0.7bar)
Ambient & Fluid Temp.	5~60°C (41~140°F)
Lubrication	Not Required(Use ISO VG32#)
Cussion	None
Rod End Screw	Female Nut(standard), male Nut(option)
Tolerance of Screw	2nd grade of KS
Allowance of Stroke Distance	+ 1
Supporting Type	Standard
Mounting	Pierce(Basic), Both Ends Tap(Option)

The Material of Parts

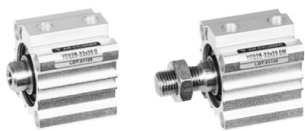
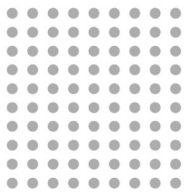
- Tube : Aluminium Extruding
- Piston : Aluminium
- Piston Rod : ϕ 12~ ϕ 25-ST304
 ϕ 32~ ϕ 80-Carbon Iron
- Seals : NBR
- Snap Ring : HSWR1
- Hex Nut : Carbon Iron
- Bush : DU Bush
- Head Cover : Aluminium
- Magnet : Rubber Magnet

* The specification on each item can be amended without any prenotice to improve a performance.
* The specification on each item can be different from actual specification.

ORDERING NO.

YCDQ2 B - 20 × 30 D M

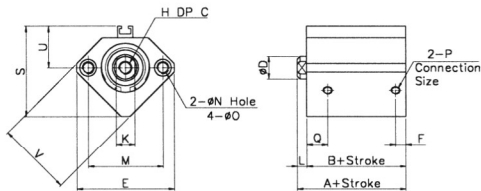
Magnet is Attached or Not		Mounting		Tube Diameter	Cylinder Stroke			Operating Method		Rod Type	
YQ2	Non Built-in	A	Both Ends Tap	12 : 12mm	Cylinder diameter	Cylinder Stroke(mm)	Port Size & Thread	D	Double-acting type	Non-magnet	Nut(Basic)
YCDQ2	Built-in	B	Pierce	16 : 16mm	ϕ 12, ϕ 16	5, 10, 15, 20, 25, 30	M5×0.8			M	Screw of rod tap (Option)
				20 : 20mm	ϕ 20, ϕ 25	5, 10, 15, 20, 25, 30, 35, 40, 45, 50					
				25 : 25mm	ϕ 32, ϕ 40	5, 10, 15, 20, 25, 30, 35, 40, 45, 50, 75, 100	G 1/8				
				32 : 32mm	ϕ 50, ϕ 63	10, 15, 20, 25, 30, 35, 40, 45, 50, 75, 100	G 1/4				
				40 : 40mm	ϕ 80	10, 15, 20, 25, 30, 35, 40, 45, 50, 75, 100	G 3/8				
				50 : 50mm							
				63 : 63mm							
				80 : 80mm							



YC(D)Q2 Series

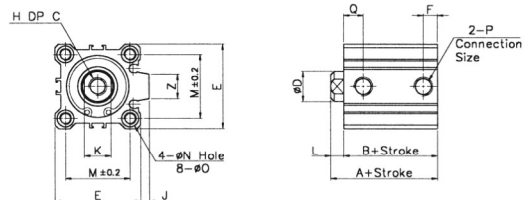
Non Built-in Magnet Dimension

YCQ2B-00 × 00D(M) ϕ 12, ϕ 16, ϕ 20, ϕ 25



Non Built-in Magnet Dimension

YCQ2B-00 × 00D(M) ϕ 32, ϕ 40, ϕ 50, ϕ 63, ϕ 80

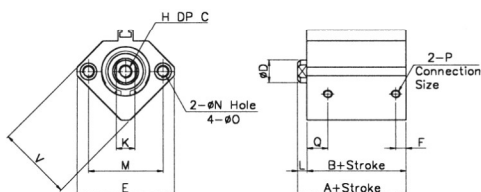


Outside Dimension

Bore Size(mm)	Stroke Range(mm)	A	B	ϕ D	E	F	H	C	ϕ I	J	K	L	M	ϕ N	ϕ O	P	Q	S	U	V	Z	B'	C'	E'	G'	H'	L'	X'
YCDQ2-12	5~30	20.5	17.0	6	32.0	5.0	M3×0.5	6	-	-	5	3.5	22	3.5	6.5 DP 3.5	M5×0.8	10.5	-	-	25	-	8	9.0	9.2	4	M5×0.8	14.0	10.5
YCDQ2-16	5~30	22.0	18.5	8	38.0	5.5	M4×0.7	8	-	-	6	3.5	28	3.5	6.5 DP 3.6	M5×0.8	10.0	-	-	29	-	10	10.0	9.2	5	M6×1.0	15.5	12.0
YCDQ2-20	5~50	24.0	19.5	10	46.8	5.5	M5×0.8	7	-	-	8	4.5	36	5.5	9.0 DP 7.0	M5×0.8	10.5	-	-	36	-	13	12.0	15.0	5	M8×1.25	18.5	14.0
YCDQ2-25	5~50	27.5	22.5	12	52.0	5.5	M6×1.0	12	-	-	10	5.0	40	5.5	9.0 DP 7.0	M5×0.8	11.0	-	-	40	-	17	15.0	19.6	6	M10×1.25	22.5	17.5
YCDQ2-32	5~100	30.0	23.0	16	45.0	7.5	M8×1.25	13	60	4.5	14	7.0	34	5.5	9.0 DP 7.0	G1/8	10.5	49.5	-	-	18	22	20.5	25.4	8	M14×1.5	28.5	23.5
YCDQ2-40	5~100	36.5	29.5	16	52.0	8.0	M8×1.25	13	69	5.0	14	7.0	40	5.5	9.0 DP 7.0	G1/8	12.0	57.0	-	-	18	22	20.5	25.4	8	M14×1.5	28.5	23.5
YCDQ2-50	10~100	38.5	30.5	20	64.0	10.5	M10×1.5	15	86	7.0	17	8.0	50	6.6	11.0 DP 8.0	G1/4	11.5	71.0	-	-	22	27	26.0	31.5	11	M18×1.5	33.5	28.5
YCDQ2-63	10~100	44.0	36.0	20	77.0	10.5	M10×1.5	15	103	7.0	17	8.0	60	9.0	14.0 DP 10.5	G1/4	15.0	84.0	-	-	22	27	26.0	31.2	11	M18×1.5	33.5	28.5
YCDQ2-80	10~100	53.0	43.5	25	98.0	12.5	M16×2.0	21	132	6.0	22	10.0	77	11.0	17.5 DP 13.5	G3/8	16.0	104.0	-	-	26	32	32.5	37.0	13	M22×1.5	43.5	35.5

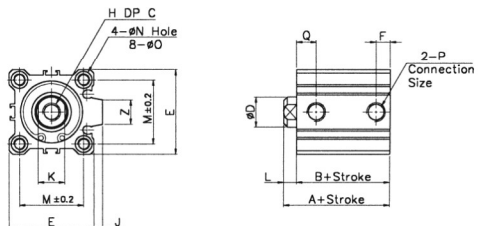
Built-in Magnet Dimension

YCDQ2B-00 × 00D(M) ϕ 12, ϕ 16, ϕ 20, ϕ 25



Built-in Magnet Dimension

YCDQ2B-00 × 00D(M) ϕ 32, ϕ 40, ϕ 50, ϕ 63, ϕ 80

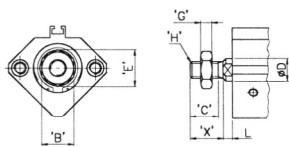


Outside Dimension

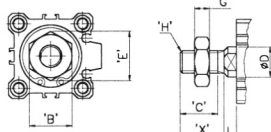
Bore Size(mm)	Stroke Range(mm)	A	B	ϕ D	E	F	H	C	ϕ I	J	K	L	M	ϕ N	ϕ O	P	Q	S	U	V	Z	B'	C'	E'	G'	H'	L'	X'
YCDQ2-12	5~30	31.5	28.0	6	32.0	5.0	M3×0.5	6	-	-	5	3.5	22	3.5	6.5 DP 3.5	M5×0.8	10.5	35.5	19.5	25	-	8	9.0	9.2	4	M5×0.8	14.0	10.5
YCDQ2-16	5~30	34.0	30.0	8	38.0	5.5	M4×0.7	8	-	-	6	3.5	28	3.5	6.5 DP 3.6	M5×0.8	10.0	41.5	22.5	29	-	10	10.0	9.2	5	M6×1.0	15.5	12.0
YCDQ2-20	5~50	36.0	31.5	10	46.8	5.5	M5×0.8	7	-	-	8	4.5	36	5.5	9.0 DP 7.0	M5×0.8	10.5	48.0	24.5	36	-	13	12.0	15.0	5	M8×1.25	18.5	14.0
YCDQ2-25	5~50	37.5	32.5	12	52.0	5.5	M6×1.0	12	-	-	10	5.0	40	5.5	9.0 DP 7.0	M5×0.8	11.0	53.5	27.5	40	-	17	15.0	19.6	6	M10×1.25	22.5	17.5
YCDQ2-32	5~100	40.0	33.0	16	45.0	7.5	M8×1.25	13	60	4.5	14	7.0	34	5.5	9.0 DP 7.0	G1/8	10.5	58.5	31.5	-	18	22	20.5	25.4	8	M14×1.5	28.5	23.5
YCDQ2-40	5~100	46.5	39.5	16	52.0	8.0	M8×1.25	13	69	5.0	14	7.0	40	5.5	9.0 DP 7.0	G1/8	12.0	66.0	35.0	-	18	22	20.5	25.4	8	M14×1.5	28.5	23.5
YCDQ2-50	10~100	48.5	40.5	20	64.0	10.5	M10×1.5	15	86	7.0	17	8.0	50	6.6	11.0 DP 8.0	G1/4	11.5	80.0	41.0	-	22	27	26.0	31.5	11	M18×1.5	33.5	28.5
YCDQ2-63	10~100	54.0	46.0	20	77.0	10.5	M10×1.5	15	103	7.0	17	8.0	60	9.0	14.0 DP 10.5	G1/4	15.0	93.0	47.5	-	22	27	26.0	31.2	11	M18×1.5	33.5	28.5
YCDQ2-80	10~100	63.5	53.5	25	98.0	12.5	M16×2.5	21	132	6.0	22	10.0	77	11.0	17.5 DP 13.5	G3/8	16.0	112.5	57.5	-	26	32	32.5	37.0	13	M22×1.5	43.5	35.5

Male Screw Outside Dimension

ϕ 12, ϕ 16, ϕ 20, ϕ 25



ϕ 32, ϕ 40, ϕ 50, ϕ 63, ϕ 80



Both Ends Tap Dimension

Bore Size	O	R
12	M4×0.7	10
16	M4×0.7	10
25	M6×1.0	17
30	M6×1.0	17
32	M6×1.0	17
40	M6×1.0	17
50	M8×1.25	20
63	M10×1.5	20
80	M12×1.75	25

