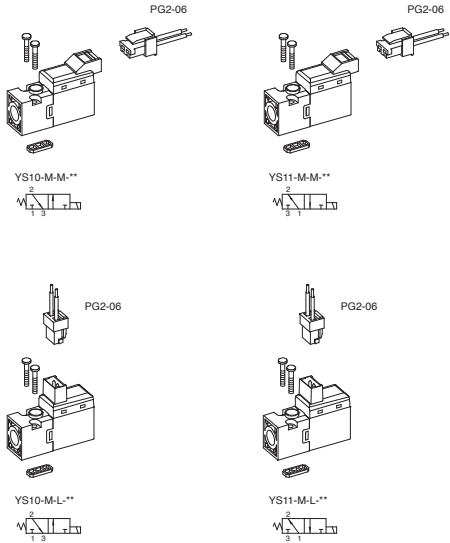


YS10

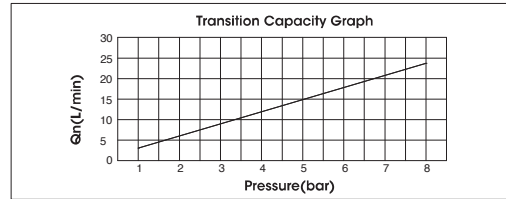
Direct Actuated
10mm Pico Solenoid Valves

- 3/2- Direct Operation Type
- Manifold Mounting Type
- Orifice ϕ 0.7mm



SPECIFICATION

ITEM	SERIES	YS10	YS11
FUNCTION		3/2-N.C	3/2-N.O
Fluids		Compressed Air & Inert Gases	
Pressure (bar)		0 ~ 7.5	
Orifice (mm)		P=0.7, R=0.1.0	
Ambient & Fluid Temp		0 ~ 60°C(32°~ 140°F)	
Response Time (5bar)		5ms or Less	
Max. Working Frequency		30c/sec	
Lubrication		Not Required(Use ISO VG32#)	
Manual Override		Push Button	
Coil Insulation Class		F-Class or Equivalent	
Permissible Voltage Variation		±10% of Rated Voltage	
Off Min. Residual Voltage		10% of Rated Voltage	
Power Consumption		DC24V : 0.8W, DC12V : 0.6W	



- ### The Material of Parts
- Pilot Parts : Glass PBT resin
 - Spring : Stainless
 - Seals : VITON
 - Armature : Stainless Steel
 - Indicator Cap : Polycarbonate

Plug Connector With Clip

Ordering Code
PG2-06 (L : 600mm)
PG2-10 (L : 1,000mm)

Blanking Plate [Material : STS304]

Ordering Code
YMF10 - BLK

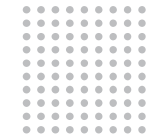
** : Voltage Selection

* The Specification on each item is subject to change without notice to improve a performance.
* The specification on each item can be different from actual specification.

ORDERING NO.

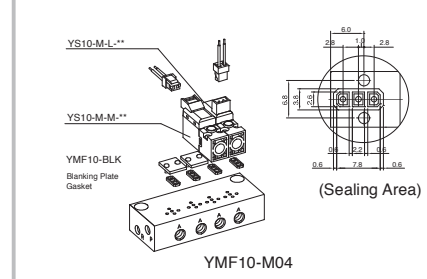
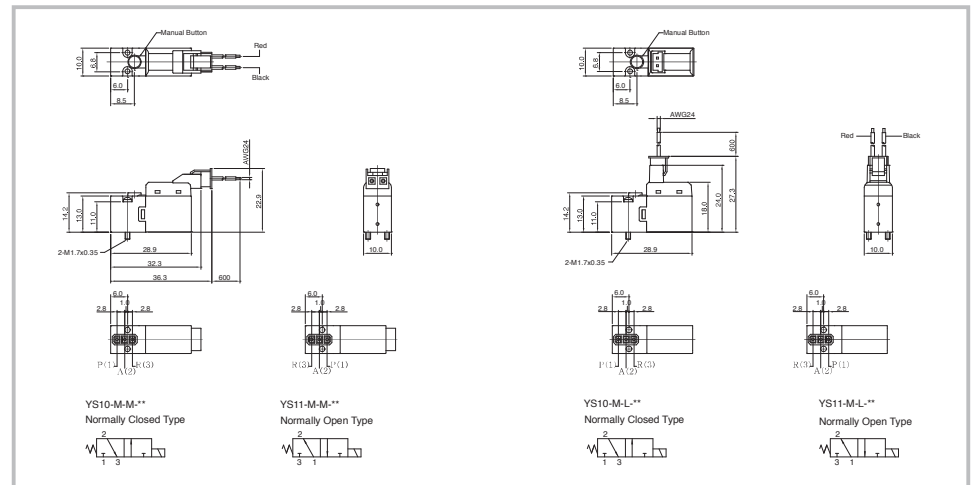
YS1 0 - M - L - D4

Valve Series	Function	Air Flow(orifice)	Solenoid Coil Type	Voltage
YSV1: ISO 10mm Solenoid Valve	0 3/2 Normally Closed (N.C) 1 3/2 Normally Open (N.O)	L Orifice (0.6) M Standard (0.7) L Orifice (0.9)	L 90 Degree Plug-in Wire Assembly With LED M 180 Degree Plug-in Wire Assembly With LED	D4 DC 24V D2 DC 12V D6 DC 6V



Direct Solenoid Actuated Valves

10mm Pico



Manifold Block Ordering Code

Symbol	Manifold Station
YMF10	3 Way
02	2-Station
04	4-Station
06	6-Station
08	8-Station
10	10-Station
12	12-Station
14	14-Station

Blanking Plate Ordering Code

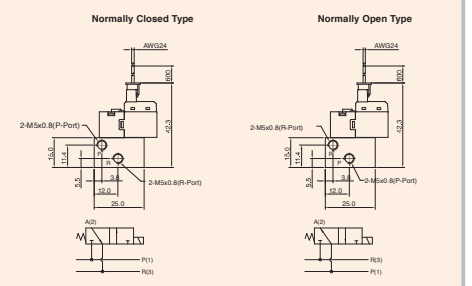
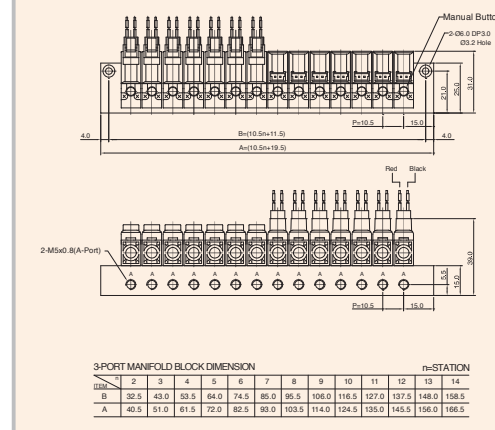
YMF10-BLK

Blanking Plate,
(Material: STS304)

Manifold Gasket
(Material: NBR)

YMF10 MANIFOLD BLOCK

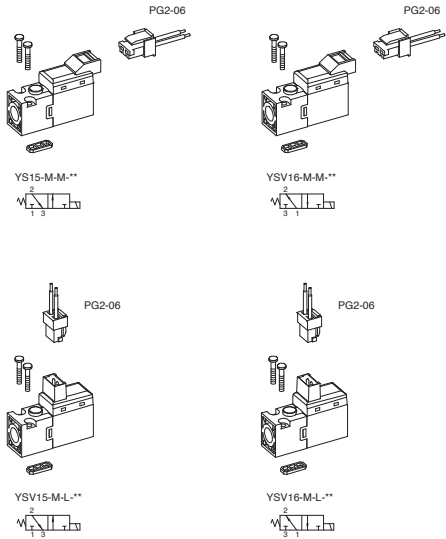
(YSV10 Solenoid Valve Use)



YS15

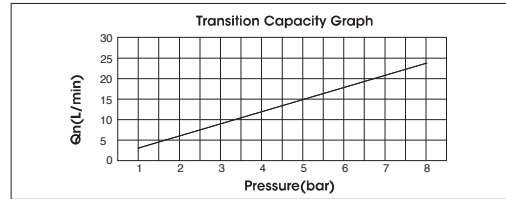
Direct Actuated
10mm Pico Solenoid Valves

- 3/2- Direct Operation Type
- Manifold Mounting Type
- Orifice ϕ 0.7mm



SPECIFICATION

ITEM	SERIES	YS15	YS16
FUNCTION		3/2-N.C	3/2-N.O
Fluids		Compressed Air & Inert Gases	
Pressure (bar)		0 ~ 7.5	
Orifice (mm)		P=0.7, R=0.1.0	
Ambient & Fluid Temp		0 ~ 60°C(32°~ 140°F)	
Response Time (5bar)		5ms or Less	
Max. Working Frequency		30c/sec	
Lubrication		Not Required(Use ISO VG32#)	
Manual Override		Push Button	
Coil Insulation Class		F-Class or Equivalent	
Permissible Voltage Variation		±10% of Rated Voltage	
Off Min. Residual Voltage		10% of Rated Voltage	
Power Consumption		DC24V : 0.8W, DC12V : 0.6W	



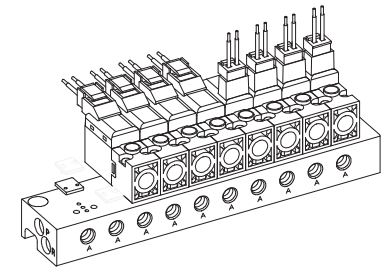
- ### The Material of Parts
- Pilot Parts : Glass PBT resin
 - Spring : Stainless
 - Seals : VITON
 - Armature : Stainless Steel
 - Indicator Cap : Polycarbonate

Plug Connector With Clip

Ordering Code
PG2-06 (L : 600mm)
PG2-10 (L : 1,000mm)

Blanking Plate [Material : STS304]

Ordering Code
YMF15 - BLK



** : Voltage Selection

* The Specification on each item is subject to change without notice to improve a performance.
* The specification on each item can be different from actual specification.

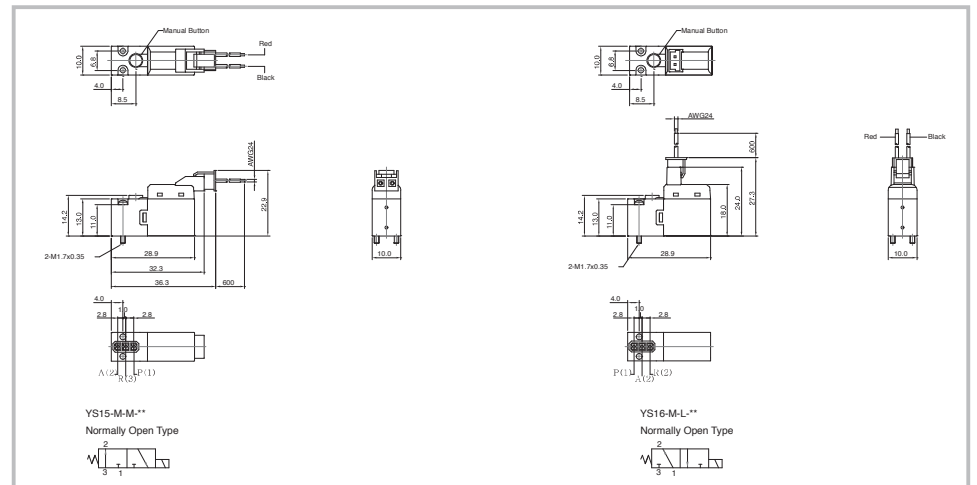
ORDERING NO.

YS1 5 - M - L - D4

Valve Series	Function	Air Flow(orifice)	Solenoid Coil Type	Voltage
YSV1: N-ISO 10mm Solenoid Valve	5 3/2 Normally Closed (N.C)	M Standard (0.7)	L 90 Degree Plug-in Wire Assembly With LED	D4 DC 24V
	6 3/2 Normally Open (N.O)	H Orifice (0.9)	M 180 Degree Plug-in Wire Assembly With LED	D2 DC 12V

Direct Solenoid Actuated Valves

10mm Pico



YS15-M-L**

YS15-M-M**

YMF15-BLK

Blanking Plate Gasket

YMF15-M04

(Sealing Area)

YMF10 MANIFOLD BLOCK

(YS15 Solenoid Valve Use)

Manifold Block Ordering Code		Blanking Plate Ordering Code	
YMF 15	- 2	YMF15-BLK	Blanking Plate, (Material: STS304)
Symbol	Manifold Station		Manifold Gasket (Material: NBR)
YMF15	3 Way	02	2-Station
		04	4-Station
		06	6-Station
		08	8-Station
		10	10-Station
		12	12-Station
		14	14-Station

Normally Closed Type

Normally Open Type

3-PORT MANIFOLD BLOCK DIMENSION													
UNIT	2	3	4	5	6	7	8	9	10	11	12	13	14
B	32.5	43.0	53.5	64.0	74.5	85.0	95.5	106.0	116.5	127.0	137.5	148.0	158.5
A	40.5	51.0	61.5	72.0	82.5	93.0	103.5	114.0	124.5	135.0	145.5	156.0	166.5