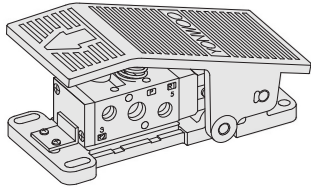


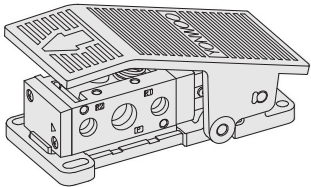
FT Series

Foot Treadle Operated
Air Return & Spring Return Spool Valves

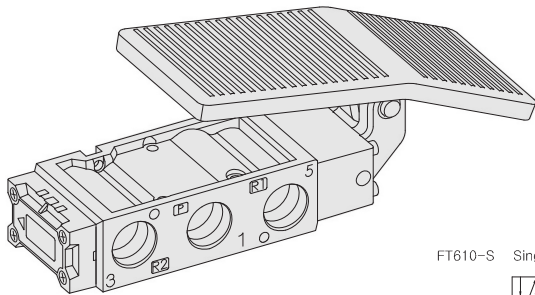
- 5/2, 5/3
- Pilot Type - 1/4, 3/8
- Direct Operation Type - 1/2
- Excellent Durability



FT410-S
2 4
3 1 5



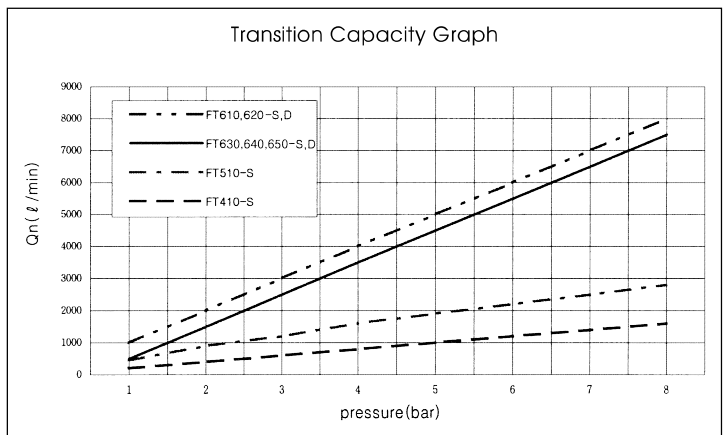
FT510-S
2 4
3 1 5



- FT610-S Single
2 4
3 1 5
- FT620-D Detented
2 4
3 1 5
- FT630-S Closed Center
2 4
3 1 5
- FT640-S Exhaust Center
2 4
3 1 5
- FT650-S Pressure Center
2 4
3 1 5

SPECIFICATION

SERIES	FT410-S	FT510-S	FT600-S, D
ITEM	FUNCTION		
	5/2-Way		5/2, 5/3-Way
Fluids	Compressed Air & Inert Gases		
Port Size	1/4	3/8	1/2
Pressure(bar)	1.5~8.0		0~8.0
Eff. Sectional Area(mm ²)-5bar	19.0	35.0	90.0
Ambient & Fluid Temp.	5~60°C (41~140°F)		
Lubrication	Not Required(Use ISO VG32#)		



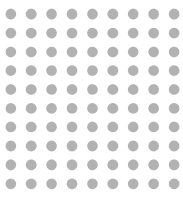
- ### The Material of Parts
- Valve Body : Die-Cast Aluminium
 - Spool : Aluminium
 - Seals : NBR
 - Spring : Stainless
 - Cap : Zinc Pressure Die-Cast
 - Pilot parts : Glass Filled Nylon
 - Foot Upper Plate : Die-Cast Aluminium
 - Foot Low Plate : Zinc Pressure Die-Cast

* The specification on each item can be amended without any prenotice to improve a performance.
* The specification on each item can be different from actual specification.

ORDERING NO.

FT4 1 0 - S

Valve Series	Function	Port Size & Thread	Return Method
FT4 : 1/4-Port Body	1 5/2 Single 2 5/2 Double 3 5/3 Closed Center 4 5/3 Open Center 5 5/3 Pressure Center	0 G 1 NPT	S Spring Return D Detented
FT5 : 3/8-Port Body			
FT6 : 1/2-Port Body			

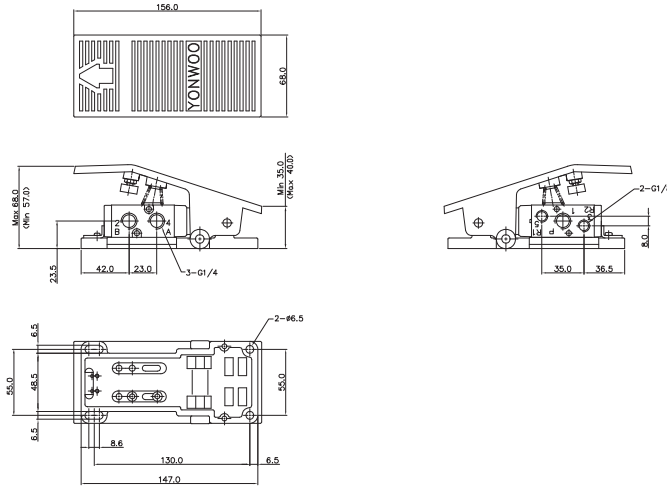
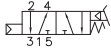


Foot Treadle Operated Spool Valves

Port Thread 1/4, 3/8, 1/2

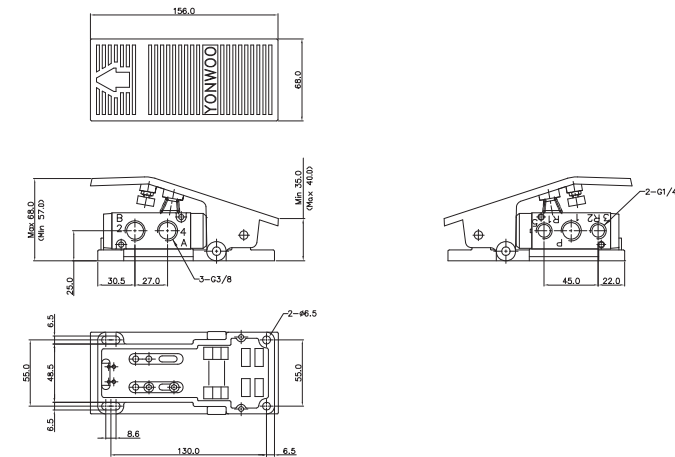
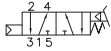
5/2-Way, Foot Valve, Air Return Operation Thread-G1/4

FT410-S



5/2-Way, Foot Valve, Air Return Operation Thread-G3/8

FT510-S



5/2-Way, Foot Valve, Spring Return & Detented Operation Thread-G1/2

