

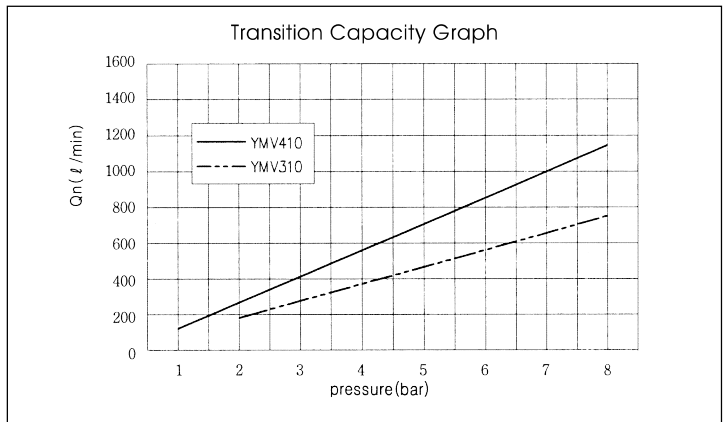
# YMV Series

Manually & Mechanically Actuated Spool Valves

- 3/2
- Direct Operation Type
- A Wide Range of Option available
- Simple Panel Mounting

## SPECIFICATION

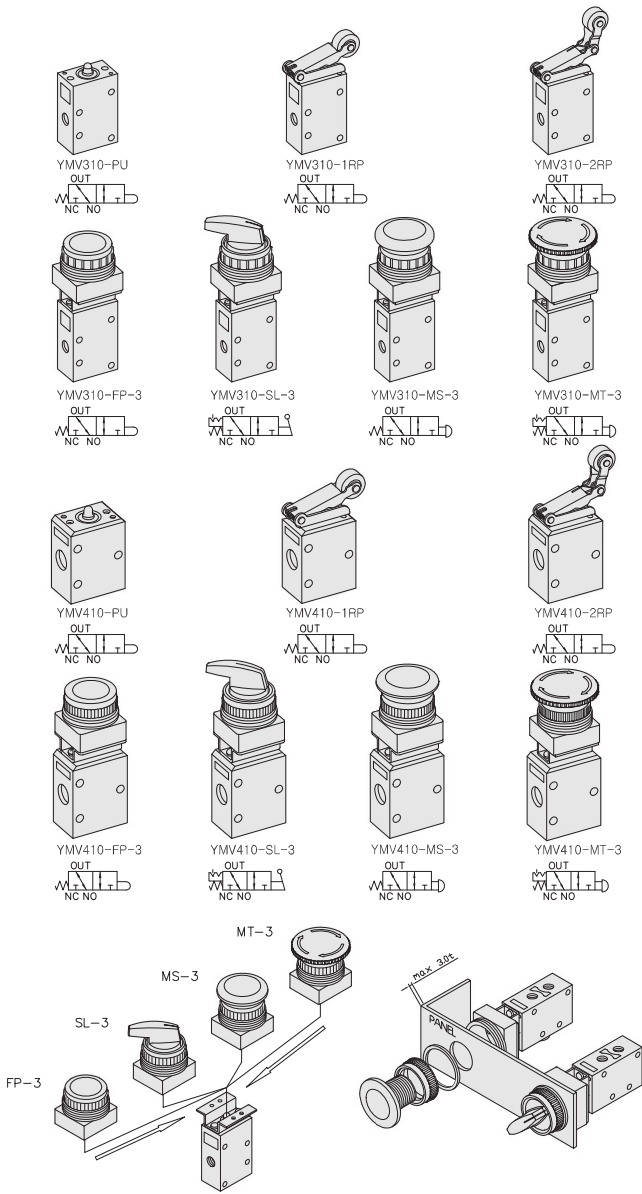
ITEM	SERIES	YMV310	YMV410
FUNCTION	3/2-Way		
Fluids	Compressed Air & Inert Gases		
Port Size		1/8	1/4
Pressure(bar)	0~8.0		
Eff. Sectional Area(mm <sup>2</sup> )-5bar		10.5	16.0
Ambient & Fluid Temp.	5~60°C (41~140°F)		
Lubrication	Not Required(Use ISO VG32#)		



### The Material of Parts

- Valve Body : Die-Cast Aluminium
- Spool : Aluminium
- Seals : NBR
- Spring : Stainless
- Button Parts : Stainless Steel, POM
- Switch Parts : Glass Filled Nylon, POM

\* The specification on each item can be amended without any prenotice to improve a performance.  
 \* The specification on each item can be different from actual specification.



## ORDERING NO.

**YMV3 1 0 - FP - 3**

Valve Series	Function	Port Size & Thread	Switch Type	Mounting Holes
YMV3: 1/8-Port Body	1   3/2 - Spring Return	0   G 1   NPT	PU   Pushrod 1RP   Two-way Plastic Roller Lever 1RB   Two-way Bearing Roller Lever 2RP   One-way Plastic Roller Lever 2RB   One-way Bearing Roller Lever	3   30mm
YMV4: 1/4-Port Body			FP   Flush, Push Button (R) SL   2-Position Selector (B) MS   Mushroom 40mm dia Spring Return (R) MT   Mushroom 40mm dia Turn to Unlock (R)	

( ) Standard Color

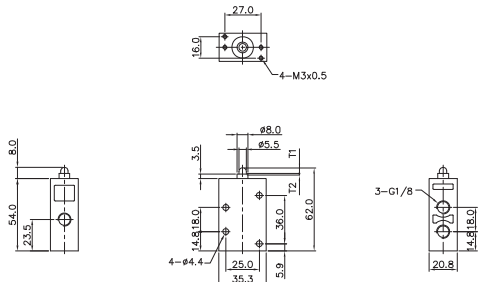
# Manually & Mechanically Actuated Spool Valves

# Port Thread 1/8, 1/4

## 3/2-Way, Direct Pushrod Operation Thread-1/8

T <sub>1</sub>	Valid Operation Dist	3.5mm
T <sub>2</sub>	InValid Operation Dist	1.0mm
F <sub>1</sub>	Pressure for Valid Operation	3.5kg
F <sub>2</sub>	Pressure for InValid Operation	

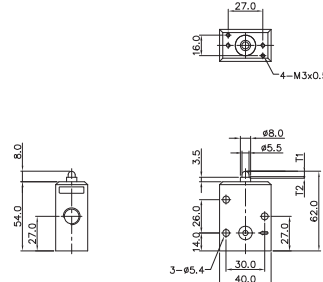
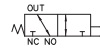
YMV310-PU



## 3/2-Way, Direct Pushrod Operation Thread-1/4

T <sub>1</sub>	Valid Operation Dist	3.5mm
T <sub>2</sub>	InValid Operation Dist	1.0mm
F <sub>1</sub>	Pressure for Valid Operation	3.5kg
F <sub>2</sub>	Pressure for InValid Operation	

YMV410-PU

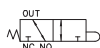


## 3/2-Way, Direct Roller Lever Operation Thread-1/8

	YMV310-1RP	YMV310-2RP
T <sub>1</sub>	Valid Operation Dist	8.5mm
T <sub>2</sub>	InValid Operation Dist	3.0mm
F <sub>1</sub>	Pressure for Valid Operation	2.0kg
F <sub>2</sub>	Pressure for InValid Operation	2.0kg

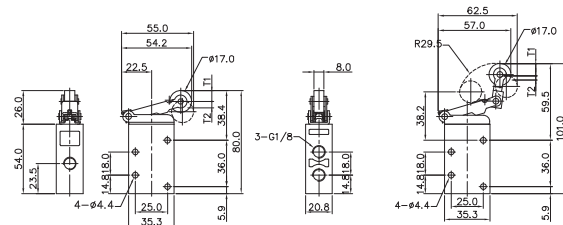
YMV310-1RP

YMV310-1RB



YMV310-2RP

YMV310-2RB



## 3/2-Way, Direct Roller Lever Operation Thread-1/4

	YMV410-1RP	YMV410-2RP
T <sub>1</sub>	Valid Operation Dist	8.0mm
T <sub>2</sub>	InValid Operation Dist	3.5mm
F <sub>1</sub>	Pressure for Valid Operation	2.0kg
F <sub>2</sub>	Pressure for InValid Operation	2.0kg

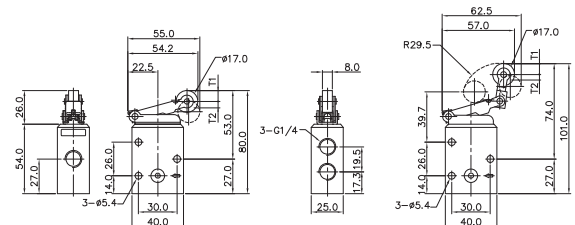
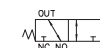
YMV410-1RP

YMV410-1RB



YMV410-2RP

YMV410-2RB



## 3/2-Way, Direct Pushrod & Selector Operation Thread-1/8

T <sub>1</sub>	Valid Operation Dist	5.5mm
T <sub>2</sub>	InValid Operation Dist	1.0mm
F <sub>1</sub>	Pressure for valid Operation	3.5kg
F <sub>2</sub>	Pressure for InValid Operation	

YMV310-FP-3

YMV310-SL-3

YMV310-MS-3

YMV310-MT-3

Flush , Push Button

2-Position Selector

Dia Spring Return

Turn to unlock