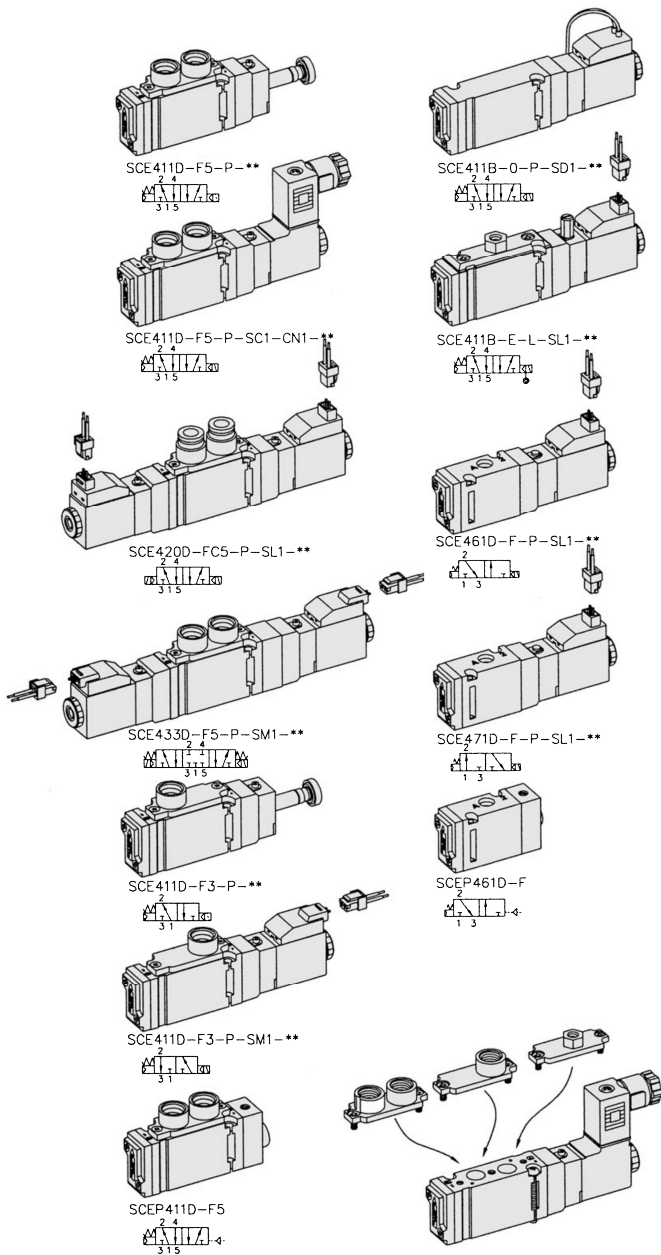


# SCE400.1/4

"E" ECONOMY Series  
Solenoid / Pneumatic Valves

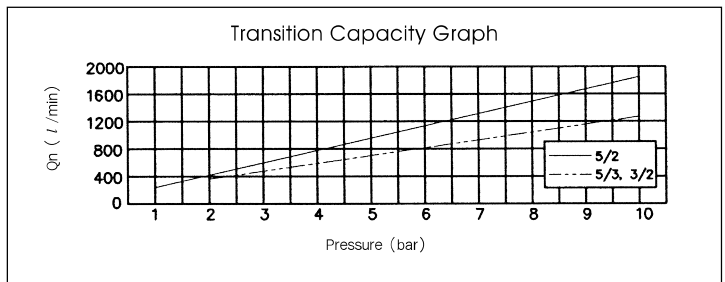
- 5/2, 5/3-1/4, 3/2-1/8 ■ 18mm Body Width
- Manifold or Sub-Base Type
- High Efficiency, Expense Reduction Type
- Transition Flow 900ℓ/min (5bar)



\*\* : Voltage Selection (see page 80)

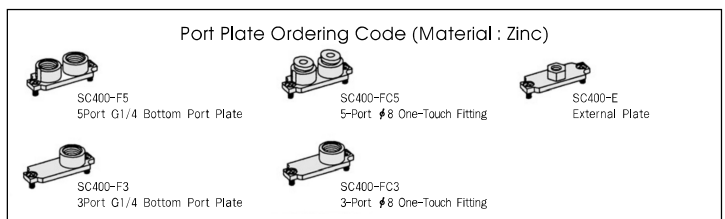
## SPECIFICATION

ITEM	SERIES	SOLENOID, PNEUMATIC	
		5/2	5/3, 3/2
Fluids		Compressed Air & Inert Gases	
Pressure(bar)		1.5~10.0	2.0~10.0
Eff. Sectional Area(mm <sup>2</sup> )-5bar		16.0	12.0
Ambient & Fluid Temp.		5~60°C (41~140°F)	
Response Time(5bar)		25ms or Less	35ms or Less
Max. Working Frequency		5c/sec	3c/sec
Lubrication		Not Required(Use ISO VG32#)	
Manual Override		Push Button(Standard), Lever Lock(Optional)	
Coil Insulation Class		F-Class or Equivalent	
Permissible Voltage Variation		±10% of Rated Voltage	
Off Min. Residual Voltage		AC:20% or Less / DC:10% or Less	
Power Consumption		Holding-AC:3.5VA(60Hz) / DC:2.5W	



### The Material of Parts

■ Valve Body : Die-Cast Aluminium	■ Pilot Parts : Glass Filled Nylon
■ Spool : Aluminium	■ Armature : Stainless Steel
■ Seals : NBR	■ Armature Seals : Viton
■ Spring : Stainless	
■ Cap : Zinc Pressure Die-Cast	



\* The specification on each item can be amended without any pretence to improve a performance.  
\* The specification on each item can be different from actual specification.

## ORDERING NO.

**SCE4 1 1 D - F5 - P - SC1 - CN1 - D4**

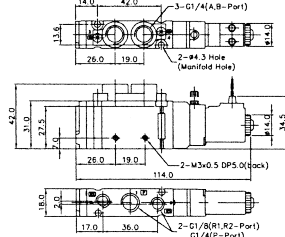
Valve Series	Function	Return Method	Port Type	Port Plate & Thread	Manual Operator	Solenoid Coil Type	Connector Type	Voltage
SCE4 : Solenoid Valve	1	5/2 Single	0	None	0	None	0	None
	2	5/2 Double	1	None	P	Push	CN1	Normal Connector
	3	5/3 Closed Center	2	D Manifold B Sub-Base	F5	Non-Locking	SG1	Connector With LED
SCEP4 : Pneumatic Valve	4	5/3 Open Center	3	0	L	Lever Locking	CD1	Connector With LED & Surge Suppressor
	5	5/3 Pressure Center		F3			CZ1	Connector With LED
	6	3/2 Normally Closed		FN5				A4
	7	3/2 Normally Open		FN3				D4

# Solenoid & Pilot Actuated Spool Valves

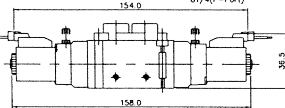
## Port Thread 1/4, 1/8

### 5Port 2Position Solenoid Valve (Manifold)

Single Solenoid  
SCE411D-F5-P-SG1-...



Double Solenoid  
SCE420D-F5-P-SM1-...



### 5Port 3Position Solenoid Valve (Manifold)

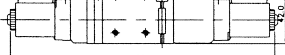
Closed Center  
SCE433D-F5-P-SL1-...



Exhaust Center  
SCE443D-F5-P-SL1-...

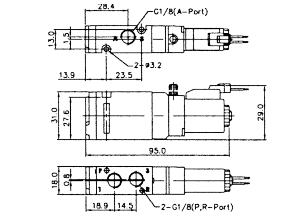


Pressure Center  
SCE453D-F5-P-SL1-...



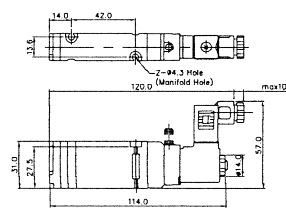
### 3Port 2Position Solenoid Valve (Manifold)

Single Solenoid  
SCE461D-F-P-SM1-...

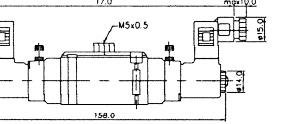


### 5Port 2Position Solenoid Valve (Sub-Base)

Single Solenoid  
SCE411B-0-P-SC1-CN1-...



Double Solenoid  
External Pilot  
SCE420B-E-P-SC1-CN1-...

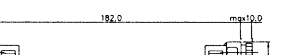


### 5Port 3Position Solenoid Valve (Sub-Base)

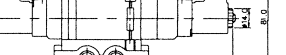
Closed Center  
SCE433B-0-P-SC1-CN1-...



Exhaust Center  
SCE443B-0-P-SC1-CN1-...

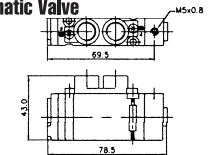


Pressure Center  
SCE453B-0-P-SC1-CN1-...

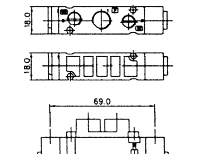


### 5Port 2Position Pneumatic Valve

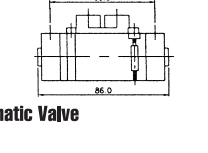
Single Pneumatic  
SCEP411D-F5



Single Pneumatic  
SCEP411B

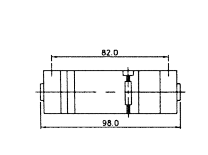


Double Pneumatic  
SCEP420D-F5



### 5Port 3Position Pneumatic Valve

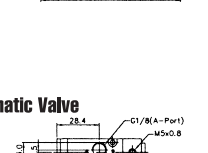
Closed Center  
SCEP433B



Exhaust Center  
SCEP443B

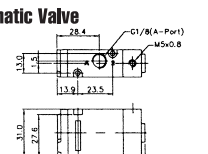


Pressure Center  
SCEP453B



### 3Port 2Position Pneumatic Valve

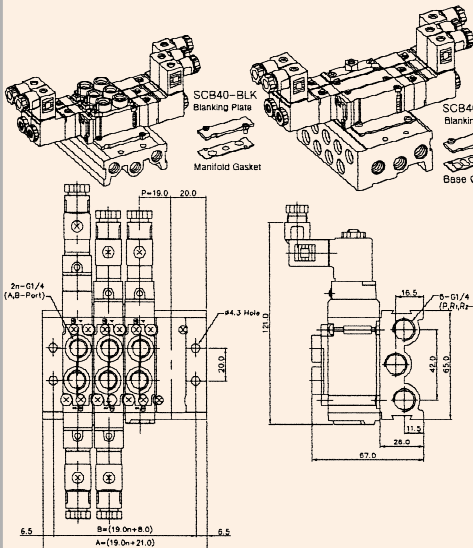
Single Pneumatic  
SCEP461D



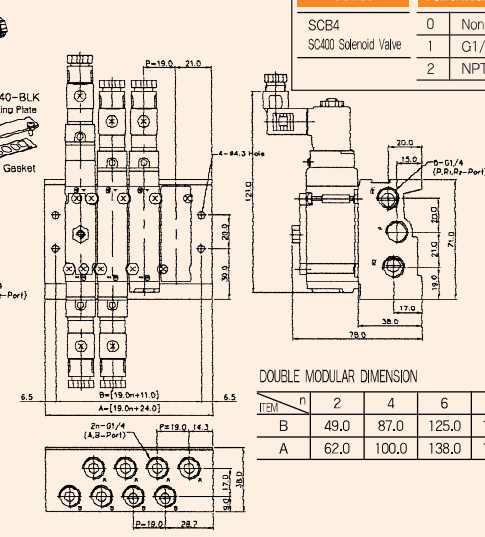
## SCB40 SINGLE, DOUBLE MANIFOLD BLOCK

(SCE400 Solenoid & Pneumatic Valve Use)

### Manifold Block Dimension



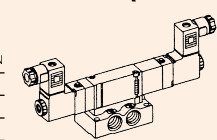
### Double Modular Manifold Block Dimension



### Manifold Ordering Code

SCB4 1 - D - M04			
Series	Port & Thread	Function	Manifold Station
SCB4	0 None	0 None	M02 2-Station
SC400 Solenoid Valve	1 G1/4	S Single Station Sub Base, 1/4 Port Without Pilot Ports	M04 4-Station
	2 NPT	D Manifold, Port 1/4	M06 6-Station
		DB Double Modular Manifold Block, 1/4 Port	M08 8-Station
		DC8 Double Modular Manifold Block, Ø8 Fitting	M10 10-Station
		D3 Manifold, Port 1/8 (3/2Way)	

### Single Station Sub Base Dimension (SCB41-S)



### Manifold Block Dimension

DOUBLE MODULAR DIMENSION		n = STATION				
ITEM	n	2	4	6	8	10
B		49.0	87.0	125.0	163.0	201.0
A		62.0	100.0	138.0	176.0	214.0

5PORT MANIFOLD BLOCK DIMENSION		n = STATION				
ITEM	n	2	4	6	8	10
B		46.0	84.0	122.0	160.0	198.0
A		59.0	97.0	135.0	173.0	211.0

3PORT MANIFOLD BLOCK DIMENSION		n = STATION				
ITEM	n	2	4	6	8	10
B		46.0	84.0	122.0	160.0	198.0
A		59.0	97.0	135.0	173.0	211.0

Ordering Code	Ordering Code
SCB46-BLK Blanking Plate (Material: STS304)	SCB40-BLK Blanking Plate (Material: STS304)
Manifold Gasket. (Material: NBR)	Manifold Gasket. Base Gasket. (Material: NBR)