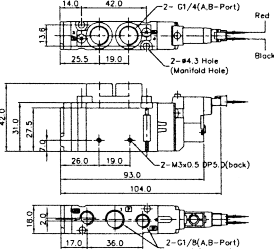


Solenoid & Pilot Actuated Spool Valves

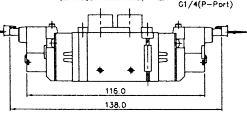
Port Thread 1/4, 1/8

5Port 2Position Solenoid Valve (Manifold)

Single Solenoid
SC411D-F5-P-L-***

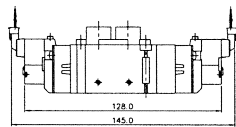


Double Solenoid
SC420D-F5-P-L-***

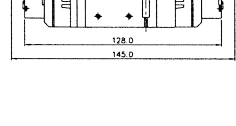


5Port 3Position Solenoid Valve (Manifold)

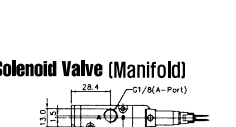
Closed Center
SC433D-F-P-M-***



Exhaust Center
SC443D-F5-P-M-***

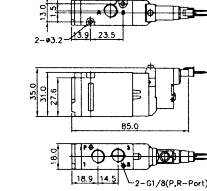


Pressure Center
SC453D-F5-P-M-***



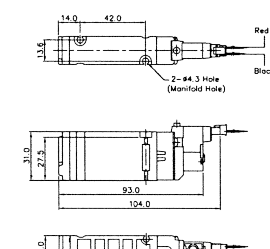
3Port 2Position Solenoid Valve (Manifold)

Single Solenoid
SC461D-F-P-L-***

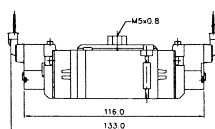


5Port 2Position Solenoid Valve (Sub-Base)

Single Solenoid
SC411B-0-P-L-***

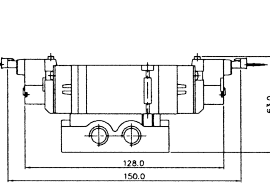


Double Solenoid
External Pilot
SC420B-E-P-M-***

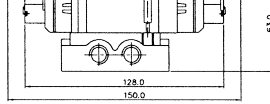


5Port 3Position Solenoid Valve (Sub-Base)

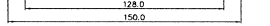
Closed Center
SC433B-0-P-L-***



Exhaust Center
SC443B-0-P-L-***

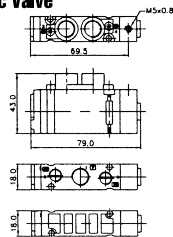


Pressure Center
SC453B-0-P-L-***



5Port 2Position Pneumatic Valve

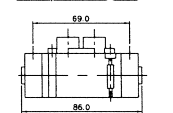
Single Pneumatic
SCP411D-F5



Single Pneumatic
SCP411B

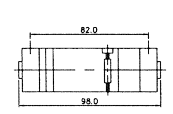


Double Pneumatic
SCP420D-F5

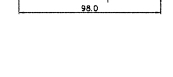


5Port 3Position Pneumatic Valve

Closed Center
SCP433B



Exhaust Center
SCP443B

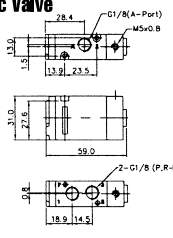


Pressure Center
SCP453B



3Port 2Position Pneumatic Valve

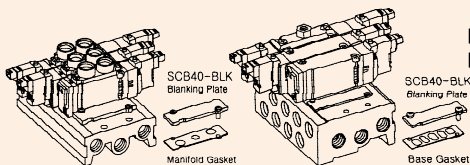
Single Pneumatic
SCP461D



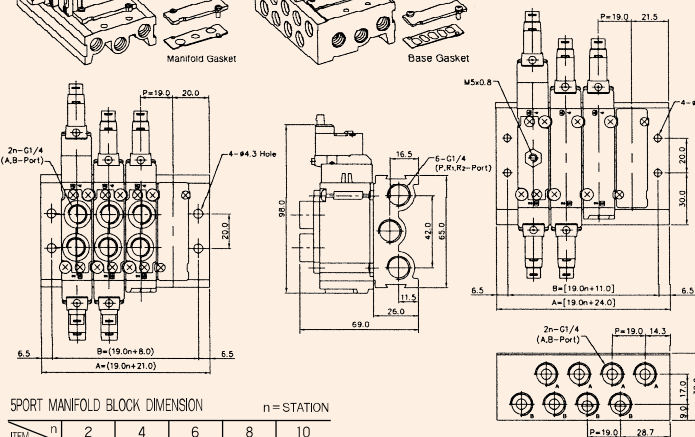
SCB40 SINGLE, DOUBLE MANIFOLD BLOCK

(SC400 Solenoid & Pneumatic Valve Use)

Manifold Block Dimension



Double Modular Manifold Block Dimension



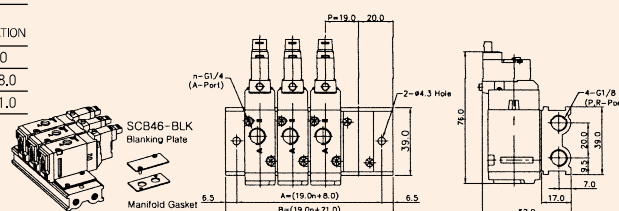
5PORT MANIFOLD BLOCK DIMENSION n=STATION

ITEM	n	2	4	6	8	10
B		46.0	84.0	122.0	160.0	198.0
A		59.0	97.0	135.0	173.0	211.0

3PORT MANIFOLD BLOCK DIMENSION n=STATION

ITEM	n	2	4	6	8	10
B		46.0	84.0	122.0	160.0	198.0
A		59.0	97.0	135.0	173.0	211.0

Manifold Block Dimension

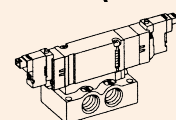


Manifold Ordering Code

SCB4 1 - D - M04

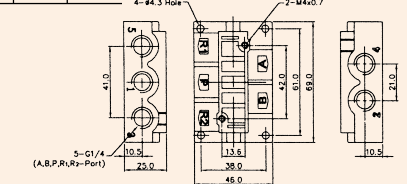
Series	Port & Thread	Function	Manifold Station
SCB4	0 None	0 None	M02 2-Station
SC400 Solenoid Valve	1 G1/4	S Single Station Sub Base, 1/4 Port Without Pilot Ports	M04 4-Station
	2 NPT	D Manifold, Port 1/4	M06 6-Station
		DB Double Modular Manifold Block, 1/4 Port	M08 8-Station
		DC8 Double Modular Manifold Block, Ø8 Fitting	M10 10-Station
		D3 Manifold, Port 1/8 (3/2Way)	

Single Station Sub Base Dimension (SCB41-S)



DOUBLE MODULAR DIMENSION n=STATION

ITEM	n	2	4	6	8	10
B		49.0	87.0	125.0	163.0	201.0
A		62.0	100.0	138.0	176.0	214.0



Ordering Code
SCB46-BLK
Blanking Plate (Material: STS304)
Manifold Gasket (Material: NBR)

Ordering Code
SCB40-BLK
Blanking Plate (Material: STS304)
Manifold Gasket (Material: NBR)
Base Gasket (Material: NBR)