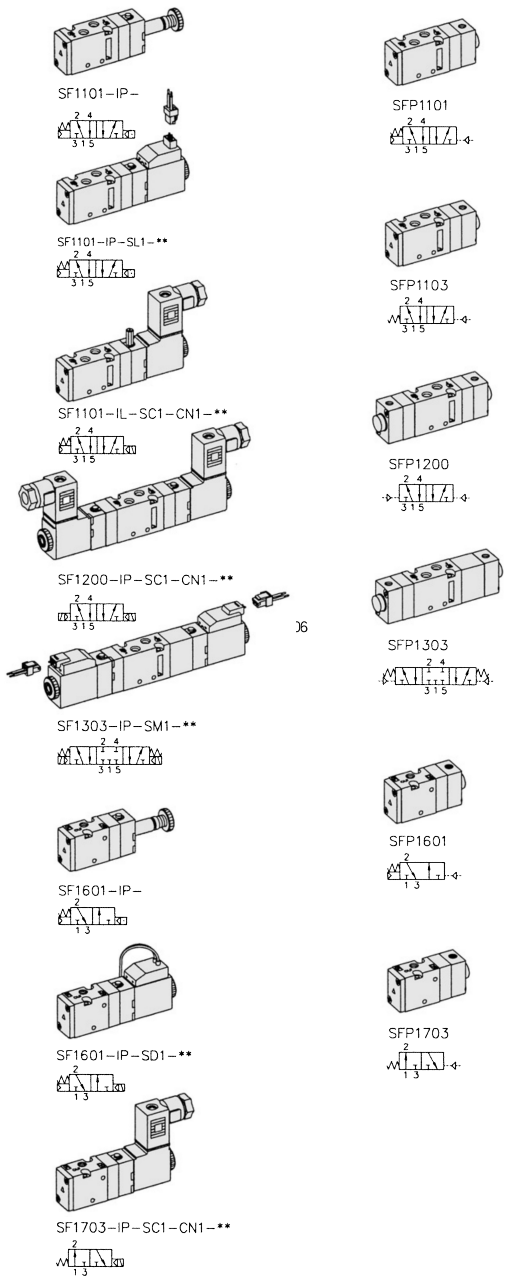


SF1000. M5

"F" FLEXIBLE Series
Solenoid / Pneumatic Valves

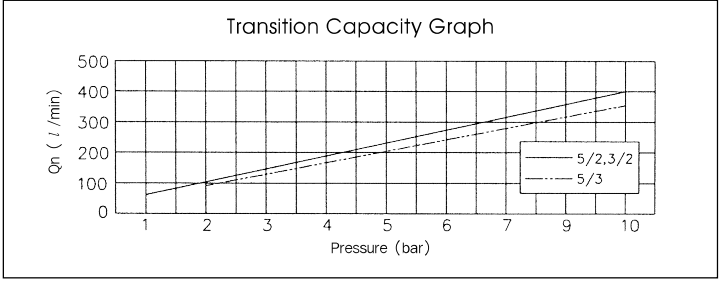
- 5/2, 5/3, 3/2 - M5
- 15mm Body Width
- Transition Flow 200ℓ/min (5bar)



***: Voltage Selection (see page 80)

SPECIFICATION

ITEM	SERIES	SOLENOID, PNEUMATIC	
		FUNCTION	
		5, 3 Port 2 Position	5 Port 3 Position
Fluids		Compressed Air & Inert Gases	
Pressure(bar)		1.5~10.0	2.0~10.0
Eff. Section Area(mm ²)-5bar		3.6	3.0
Ambient & Fluid Temp.		5~60°C (41~140°F)	
Response Time(5bar)		25ms or Less	35ms or Less
Max. Working Frequency		5c/sec	3c/sec
Lubrication		Not Required(Use ISO VG32#)	
Manual Override		Push Button(Standard), Lever Lock(Optional)	
Coil Insulation Class		F-Class or Equivalent	
Permissible Voltage Variation		±10% of Rated Voltage	
Off Min. Residual Voltage		AC:20% or Less / DC:10% or Less	
Power Consumption		Holding-AC:3.5VA(60Hz) / DC:2.5W	



- ### The Material of Parts
- Valve Body : Die-Cast Aluminium
 - Spool : Aluminium
 - Seals : NBR
 - Spring : Stainless
 - Cap : Zinc Pressure Die-Cast
 - Pilot Parts : Glass Filled Nylon
 - Armature : Stainless Steel
 - Armature Seals : Viton

Plug Connector With Clip

Ordering Code
PG2-06 (L: 600mm)
PG2-10 (L: 1,000mm)

* The specification on each item can be amended without any prenotice to improve a performance.
* The specification on each item can be different from actual specification.

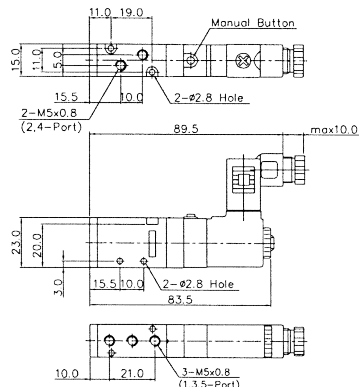
ORDERING NO.

SF1 1 0 1 - I P - SC1 - CN1 - A2

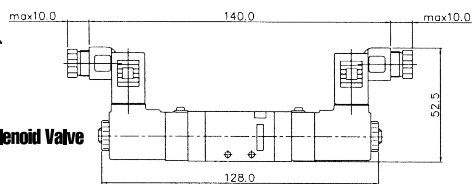
Valve Series	Function	Part Size & Thread	Return Method	Int/Ext. Pilot	Manual Operator	Solenoid Coil Type	Connector Type	Voltage
SF1 : Solenoid Valve	1 5/2 Single	0 M5×0.8	0 None	I Internal Pilot	0 None	0 None	0 None	0 None
	2 5/2 Double	1 10-32 UNF	1 Air + Spring		P Push Non-Locking	SC1 3 Pin Connector Coil	CN1 Normal Connector	A2 AC 220V
	3 5/3 Closed Center		2 Air		L Lever Locking	SG1 Grommet/Flying Leads	CD1 Connector With LED	A1 AC 110V
	4 5/3 Open Center		3 Spring			SD1 Grommet/Flying Leads With LED	CZ1 Connector With LED & Surge Suppressor	A4 AC 24V
SFP1 : Pneumatic Valve	5 5/3 Pressure Center				SL1 90 Degree Plug-in Wire Assembly With LED		D4 DC 24V	
	6 3/2 Normally Closed				SM1 180 Degree Plug-in Wire Assembly With LED		D2 DC 12V	
	7 3/2 Normally Open							

5Port 2Position Solenoid Valve

Single Solenoid
SF1101-IP-SC1-CN1-...

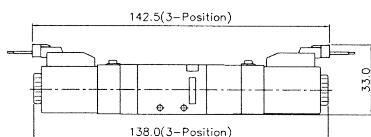
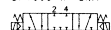


Double Solenoid
SF1200-IP-SC1-CN1-...

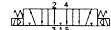


5Port 3Position Solenoid Valve

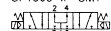
Closed Center
SF1303-IP-SM1-...



Exhaust Center
SF1403-IP-SM1-...



Pressure Center
SF1503-IP-SM1-...

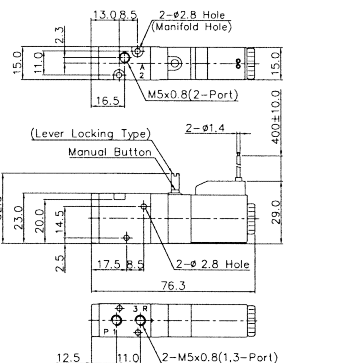


3Port 2Position Solenoid Valve

Normally Closed
SF1601-IP-SD1-...

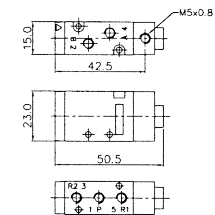


Normally Open
SF1701-IP-SD1-...

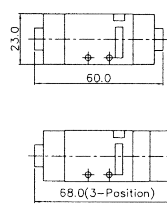


5Port 2Position Pneumatic Valve

Single Pneumatic
SFP1101

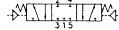


Double Pneumatic
SFP1200

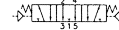


5Port 3Position Pneumatic Valve

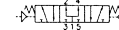
Closed Center
SFP1303



Exhaust Center
SFP1403



Pressure Center
SFP1503

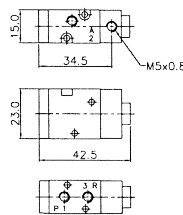


3Port 2Position Pneumatic Valve

Normally Closed
SFP1601



Normally Open
SFP1701

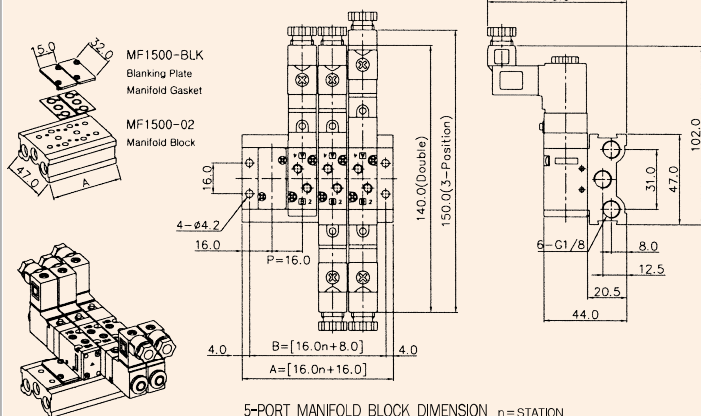


MF1000 MANIFOLD BLOCK

(SF1000 Solenoid & Pneumatic Valve Use)

5-Port Manifold Block

MF1500-4



5-PORT MANIFOLD BLOCK DIMENSION n=STATION

ITEM	n	2	4	6	8	10
B		40.0	72.0	104.0	136.0	168.0
A		48.0	80.0	112.0	144.0	176.0

Manifold Block Ordering Code

MF 1500 - 2

Series	Manifold Station
MF1500	5 Way
MF1300	3 Way

02	2-Station
04	4-Station
06	6-Station
08	8-Station
10	10-Station

Blanking Plate Ordering Code

MF1500-BLK

Blanking Plate. (Material:SCPI)

Manifold Gasket. (Material:NBR)

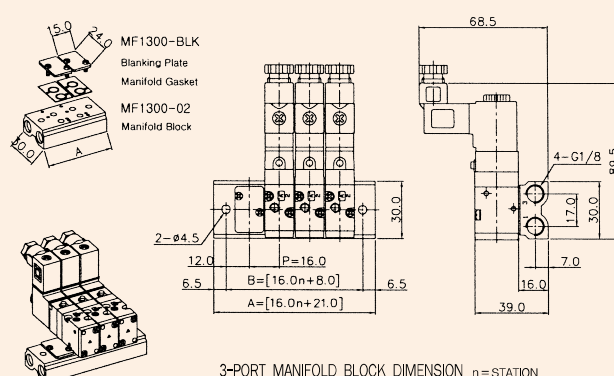
MF1300-BLK

Blanking Plate. (Material:SCPI)

Manifold Gasket. (Material:NBR)

3-Port Manifold Block

MF1300-4



3-PORT MANIFOLD BLOCK DIMENSION n=STATION

ITEM	n	2	4	6	8	10
B		40.0	72.0	104.0	136.0	168.0
A		53.0	85.0	117.0	149.0	181.0