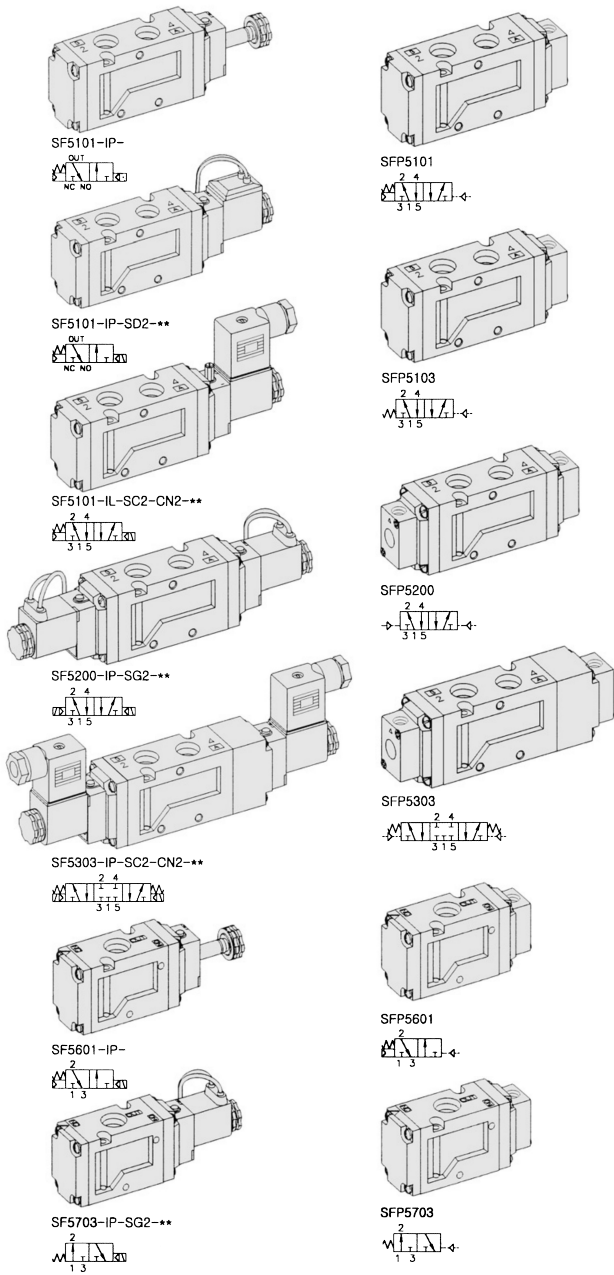


SF5000. 3/8

"F" FLEXIBLE Series
Solenoid / Pneumatic Valves

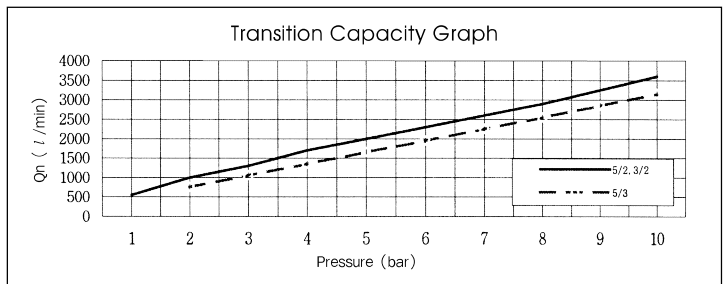
- 5/2, 5/3, 3/2 - 3/8
- 32mm Body Width
- Transition Flow 2000ℓ/min (5bar)



** : Voltage Selection (see page 80)

SPECIFICATION

ITEM	SERIES	SOLENOID, PNEUMATIC	
		FUNCTION	
		5, 3 Port 2 Position	5 Port 3 Position
Fluids		Compressed Air & Inert Gases	
Pressure(bar)		1.5~10.0	2.0~10.0
Eff. Section Area(mm ²)-5bar		36.0	30.0
Ambient & Fluid Temp.		5~60°C (41~140°F)	
Response Time(5bar)		30ms or Less	40ms or Less
Max. Working Frequency		5c/sec	3c/sec
Lubrication		Not Required(Use ISO VG32#)	
Manual Override		Push Button(Standard), Lever Lock(Optional)	
Coil Insulation Class		F-Class or Equivalent	
Permissible Voltage Variation		±10% of Rated Voltage	
Off Min. Residual Voltage		AC:20% or Less / DC:10% or Less	
Power Consumption		Holding-AC:5.5VA(60Hz) / DC:2.5W	



- ### The Material of Parts
- Valve Body : Die-Cast Aluminium
 - Spool : Aluminium
 - Seals : NBR
 - Spring : Stainless
 - Cap : Zinc Pressure Die-Cast
 - Pilot Parts : Glass Filled Nylon
 - Armature : Stainless Steel
 - Armature Seals : Viton

* The specification on each item can be amended without any prenotice to improve a performance.
* The specification on each item can be different from actual specification.

ORDERING NO.

SF5 1 0 1 - I P - SC2 - CN2 - A2

Valve Series	Function	Part Size & Thread	Return Method	Int/Ext. Pilot	Manual Operator	Solenoid Coil Type	Connector Type	Voltage		
SF5 : Solenoid Valve	1 5/2 Single	0 G 3/8	0 None	1 Internal Pilot	0 None	0 None	0 None	0 None		
	2 5/2 Double	1 NPT 3/8	1 Air + Spring		P Push Non-Locking			SC2 3 Pin Connector Coil	CN2 Normal Connector	A2 AC 220V
	3 5/3 Closed Center		2 Air		L Lever Locking			SG2 Crommet/Flying Leads	CD2 Connector With LED	A1 AC 110V
SFP5 : Pneumatic Valve	4 5/3 Open Center		3 Spring			SD2 Crommet/Flying Leads With LED	CZ2 Connector With LED & Surge Suppressor	A4 AC 24V		
	5 5/3 Pressure Center							D4 DC 24V		
	6 3/2 Normally Closed							D2 DC 12V		
	7 3/2 Normally Open									

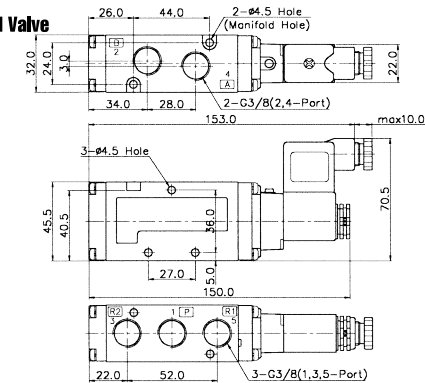


Solenoid & Pilot Actuated Spool Valves

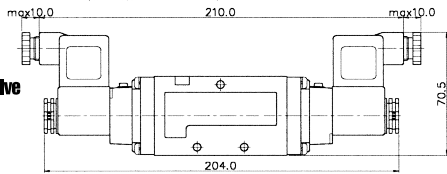
Port Thread **3/8**

5Port 2Position Solenoid Valve

Single Solenoid
SF5101-IP-SC2-CN2-***

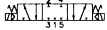


Double Solenoid
SF5200-IP-SC2-CN2-***

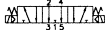


5Port 3Position Solenoid Valve

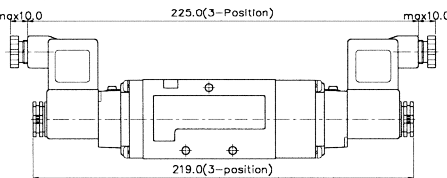
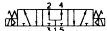
Closed Center
SF5303-IP-SC2-CN2-***



Exhaust Center
SF5403-IP-SC2-CN2-***



Pressure Center
SF5503-IP-SC2-CN2-***

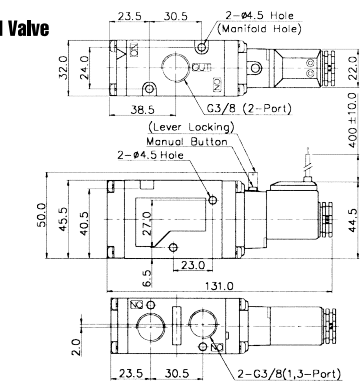


3Port 2Position Solenoid Valve

Normally Closed
SF5601-IP-SD2-***

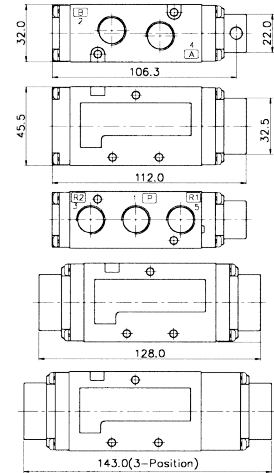


Normally Closed
SF5701-IP-SD2-***



5Port 2Position Pneumatic Valve

Single Pneumatic
SFP5101

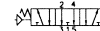


5Port 3Position Pneumatic Valve

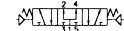
Closed Center
SFP5303



Exhaust Center
SFP5403



Pressure Center
SFP5503

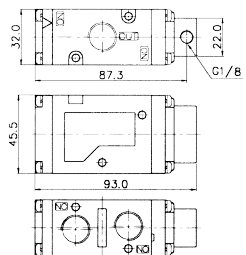


3Port 2Position Pneumatic Valve

Normally Closed
SFP5601



Normally Open
SFP5701



MF5000 MANIFOLD BLOCK

(SF5000 Solenoid & Pneumatic Valve Use)

Manifold Block Ordering Code

MF 5500

2

Series

Manifold Station

MF5500	5 Way	02	2-Station
MF5300	3 Way	04	4-Station
		06	6-Station
		08	8-Station
		10	10-Station

Blanking Plate Ordering Code

MF5500-BLK

Blanking Plate
(Material:SCP1)

Manifold Gasket
(Material: NBR)

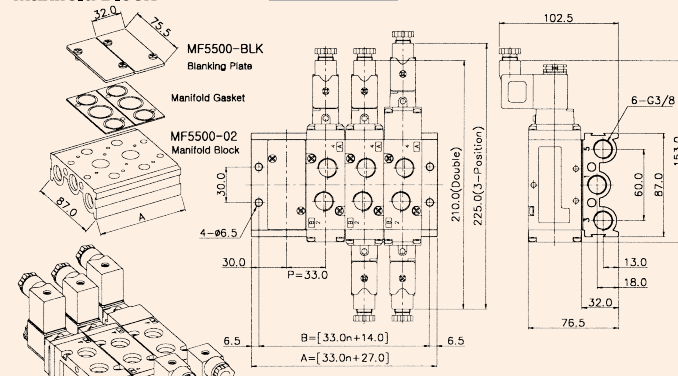
MF5300-BLK

Blanking Plate
(Material:SCP1)

Manifold Gasket
(Material: NBR)

5-Port Manifold Block

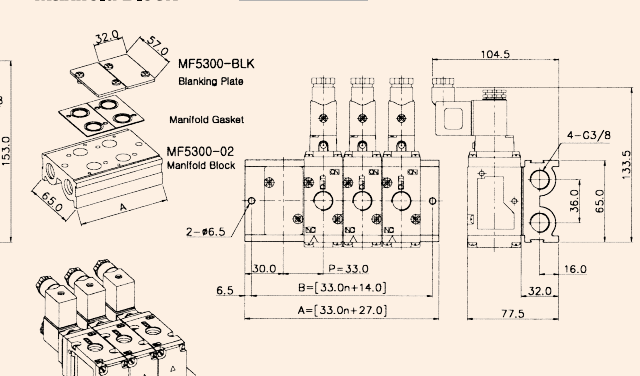
MF5500-4



ITEM	n	n=STATION				
		2	4	6	8	10
B		80.0	146.0	212.0	278.0	344.0
A		93.0	159.0	225.0	291.0	357.0

3-Port Manifold Block

MF5300-4



ITEM	n	n=STATION				
		2	4	6	8	10
B		80.0	146.0	212.0	278.0	344.0
A		93.0	159.0	225.0	291.0	357.0