

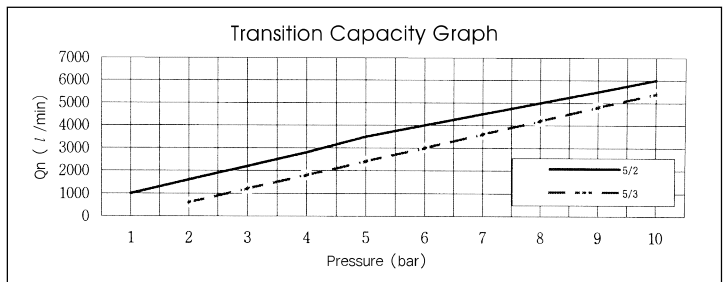
# SF6000. 1/2

"F" FLEXIBLE Series  
Solenoid / Pneumatic Valves

- 5/2, 5/3 - 1/2
- 36mm Body Width
- Transition Flow 3500ℓ/min (5bar)

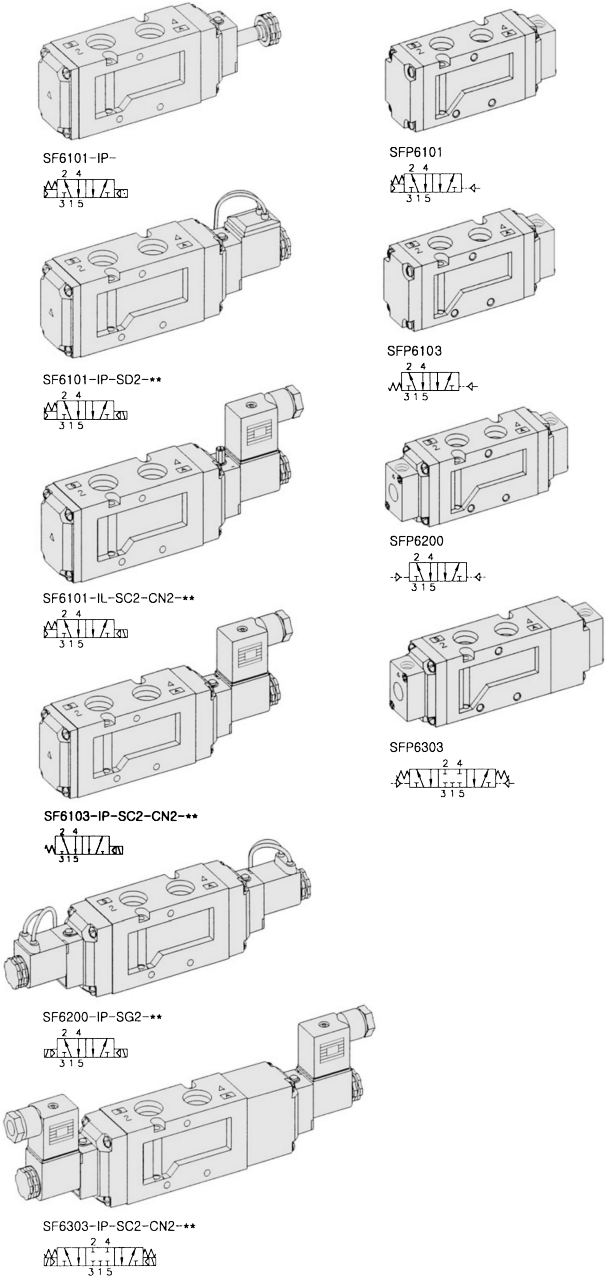
## SPECIFICATION

ITEM	SERIES	SOLENOID, PNEUMATIC	
		FUNCTION	
		5 Port 2 Position	5 Port 3 Position
Fluids		Compressed Air & Inert Gases	
Pressure(bar)		1.5~10.0	2.0~10.0
Eff. Section Area(mm <sup>2</sup> )-5bar		65.0	50.0
Ambient & Fluid Temp.		5~60°C (41~140°F)	
Response Time(5bar)		30ms or Less	40ms or Less
Max. Working Frequency		2c/sec	1c/sec
Lubrication		Not Required(Use ISO VG32#)	
Manual Override		Push Button(Standard), Lever Lock(Optional)	
Coil Insulation Class		F-Class or Equivalent	
Permissible Voltage Variation		±10% of Rated Voltage	
Off Min. Residual Voltage		AC:20% or Less / DC:10% or Less	
Power Consumption		Holding-AC:5.5VA(60Hz) / DC:2.5W	



- ### The Material of Parts
- Valve Body : Die-Cast Aluminium
  - Spool : Aluminium
  - Seals : NBR
  - Spring : Stainless
  - Cap : Zinc Pressure Die-Cast
  - Pilot Parts : Glass Filled Nylon
  - Armature : Stainless Steel
  - Armature Seals : Viton

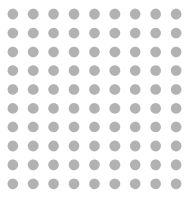
\* The specification on each item can be amended without any prenotice to improve a performance.  
\* The specification on each item can be different from actual specification.



\*\* : Voltage Selection (see page 80)

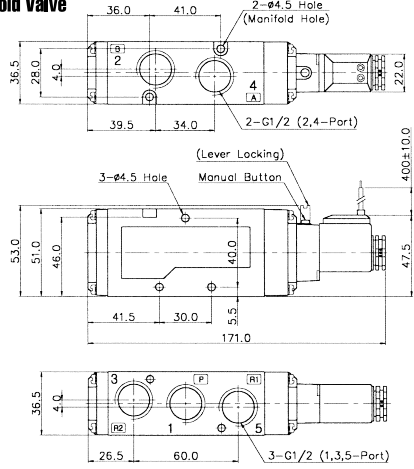
## ORDERING NO.

<b>SF6</b>		<b>1</b>	<b>0</b>	<b>1</b>	<b>-</b>	<b>I</b>	<b>P</b>	<b>-</b>	<b>SC2</b>	<b>-</b>	<b>CN2</b>	<b>-</b>	<b>A2</b>
Valve Series	Function	Part Size & Thread		Return Method	Int/Ext. Pilot	Manual Operator		Solenoid Coil Type	Connector Type		Voltage		
SF6 : Solenoid Valve	1 5/2 Single	0	G 1/2	0 None	I Internal Pilot	0 None	0 None	0 None	0 None	A2 AC 220V	A1 AC 110V	A4 AC 24V	D4 DC 24V
	2 5/2 Double	1	NPT 1/2	1 Air + Spring		P Push Non-Locking							
	3 5/3 Closed Center			2 Air		L Lever Locking							
	4 5/3 Open Center			3 Spring									
SFP6 : Pneumatic Valve	5 5/3 Pressure Center						SC2 3 Pin Connector Coil	CN2 Normal Connector					
							SG2 Crommet/Flying Leads	CD2 Connector With LED					
							SD2 Crommet/Flying Leads With LED	CZ2 Connector With LED & Surge Suppressor					

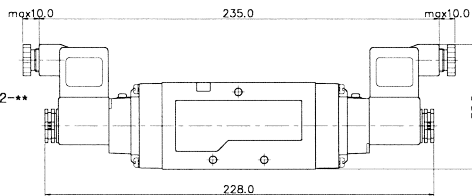


### 5Port 2Position Solenoid Valve

Single Solenoid  
SF6101-IP-SD2-\*\*\*

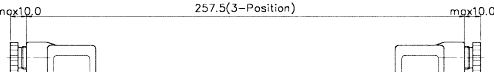
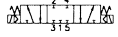


Double Solenoid  
SF6200-IP-SC2-CN2-\*\*\*

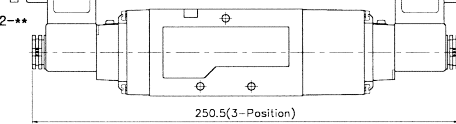
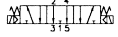


### 5Port 3Position Solenoid Valve

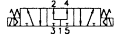
Closed Center  
SF6303-IP-SC2-CN2-\*\*\*



Exhaust Center  
SF6403-IP-SC2-CN2-\*\*\*

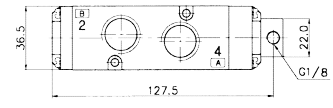


Pressure Center  
SF6503-IP-SC2-CN2-\*\*\*

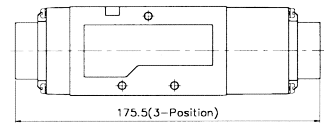
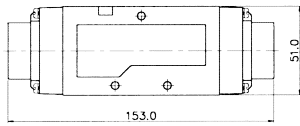


### 5Port 2Position Pneumatic Valve

Single Pneumatic  
SFP6101

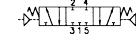


Double Pneumatic  
SFP6200

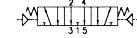


### 5Port 3Position Pneumatic Valve

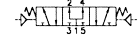
Closed Center  
SFP6303



Exhaust Center  
SFP6403



Pressure Center  
SFP6503

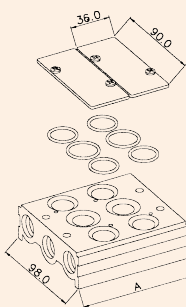


## MF6000 MANIFOLD BLOCK

(SF6000 Solenoid & Pneumatic Valve Use)

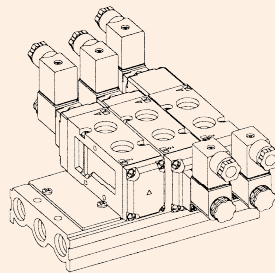
### 5-Port Manifold Block

MF6500-4



MF6500-BLK  
Blanking Plate  
Gasket O-Ring

MF6500-02  
Manifold Block

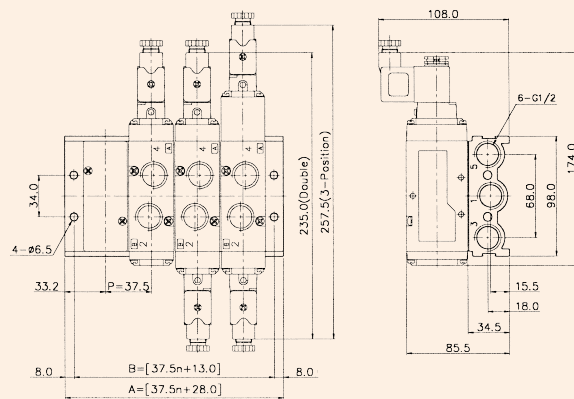


### Manifold Block Ordering Code

MF 6500		-		2	
Series	Manifold Station				
MF6500	5 Way	02	2-Station		
		04	4-Station		
		06	6-Station		
		08	8-Station		
		10	10-Station		

### Blanking Plate Ordering Code

MF6500-BLK	Blanking Plate. (Material: SCP1)
	Gasket O-Ring (Material: NBR)



5-PORT MANIFOLD BLOCK DIMENSION

ITEM	n	2	4	6	8	10
B		88.0	163.0	238.0	313.0	388.0
A		103.0	178.0	253.0	328.0	403.0