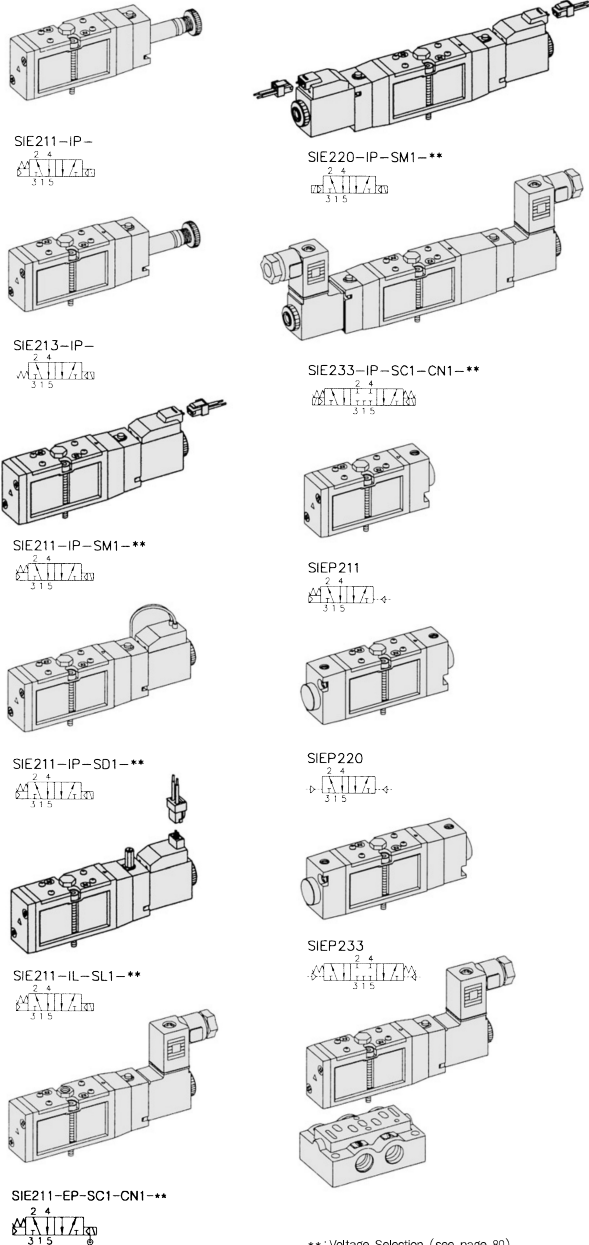


SIE200

"E" ECONOMY Series
Solenoid / Pneumatic Valves

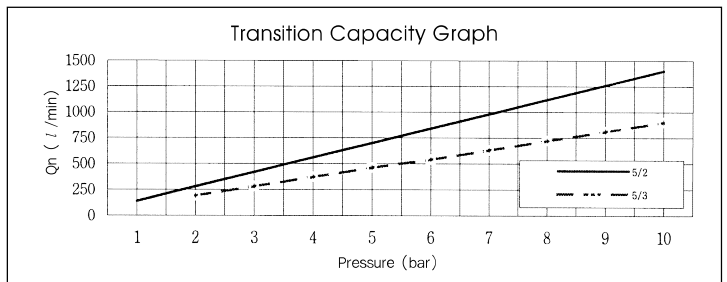
- 5/2, 5/3
- 18mm Body Width
- Sub-Base or Manifold Mounting Type
- Transition Flow 700ℓ/min (5bar)



** : Voltage Selection (see page 80)

SPECIFICATION

ITEM	SERIES FUNCTION	SOLENOID, PNEUMATIC	
		5 Port 2 Position	5 Port 3 Position
Fluids		Compressed Air & Inert Gases	
Pressure(bar)		1.5~10.0	2.0~10.0
Eff. Sectional Area(mm ²)-5bar		12.0	8.5
Ambient & Fluid Temp.		5~60°C (41~140°F)	
Response Time(5bar)		25ms or Less	35ms or Less
Max. Working Frequency		5c/sec	3c/sec
Lubrication		Not Required(Use ISO VG32#)	
Manual Override		Push Button(Standard), Lever Lock(Optional)	
Coil Insulation Class		F-Class or Equivalent	
Permissible Voltage Variation		±10% of Rated Voltage	
Off Min. Residual Voltage		AC:20% or Less / DC:10% or Less	
Power Consumption		Holding-AC:3.5VA(60Hz) / DC:2.5W	



The Material of Parts

■ Valve Body : Die-Cast Aluminium	■ Pilot Parts : Glass Filled Nylon
■ Spool : Aluminium	■ Armature : Stainless Steel
■ Seals : NBR	■ Armature Seals : Viton
■ Spring : Stainless	
■ Cap : Zinc Pressure Die-Cast	

* The specification on each item can be amended without any prenotice to improve a performance.
* The specification on each item can be different from actual specification.

ORDERING NO.

SIE2 1 1 - I P - SC1 - CN1 - A2

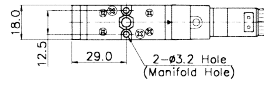
Valve Series	Function	Return Method	Int/Ext. Pilot	Manual Operator	Solenoid Coil Type	Connector Type	Voltage
SIE2 : Solenoid Valve	1	5/2 Single	0 None	I Internal Pilot	0 None	0 None	0 None
	2	5/2 Double	1 Air + Spring	E External Pilot	P Push Non-Locking	CN1 Normal Connector	A2 AC 220V
	3	5/3 Closed Center	2 Air		L Lever Locking	SG1 Grommet/Flying Leads	A1 AC 110V
	4	5/3 Open Center	3 Spring			SD1 Grommet/Flying Leads With LED	A4 AC 24V
SIEP2 : Pneumatic Valve	5	5/3 Pressure Center			SL1 90 Degree Plug-in Wire Assembly With LED	CZ1 Connector With LED & Surge Suppressor	D4 DC 24V
					SM1 180 Degree Plug-in Wire Assembly With LED		D2 DC 12V

Solenoid & Pilot Actuated Spool Valves

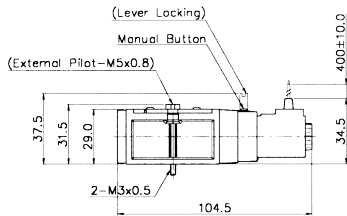
18mm Body Width

5Port 2Position Solenoid Valve

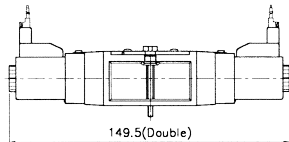
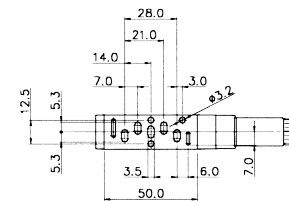
Single Solenoid
SIE211-IP-SG1-***



External Pilot
SIE211-EP-SG1-***

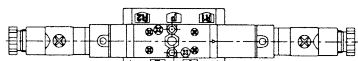
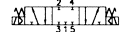


Double Solenoid
SIE220-IP-SL1-***

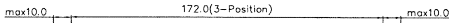
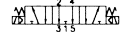


5Port 3Position Solenoid Valve

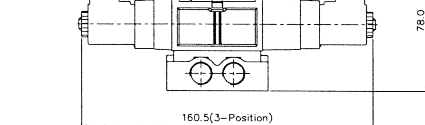
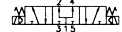
Closed Center
SIE233-IP-SC1-CN1-***



Exhaust Center
SIE243-IP-SC1-CN1-***

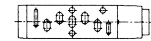
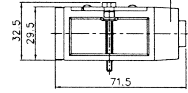
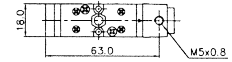


Pressure Center
SIE253-IP-SC1-CN1-***

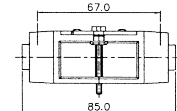


5Port 2Position Pneumatic Valve

Single Pneumatic
SIEP211

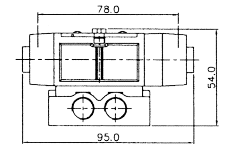
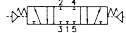


Double Pneumatic
SIEP220

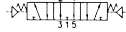


5Port 3Position Pneumatic Valve

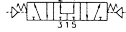
Closed Center
SIEP233



Exhaust Center
SIEP243



Pressure Center
SIEP253

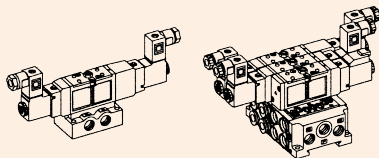


Sub Base Ordering Code

Sub Base Series	Port & Thread	Function
SIB2	0 None	S Single Station Sub Base, 1/4 Port Without Pilot Ports
SIE200 Solenoid Valve	1 G	SP Single Station Sub Base, 1/4 Port With Pilot Ports
	2 NPT	DB Double Modular Sub Base, 1/8 Port Without Pilot Ports
		DC6 Double Modular Sub Base, #6 One-Touch Fitting
		E End Cover, 1/8 Port
		EB End Blanking Cover

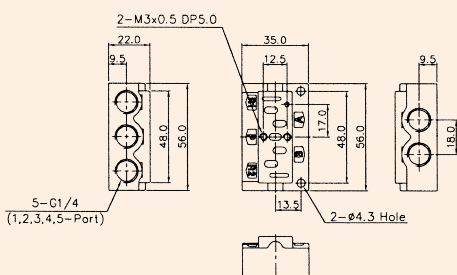
SIB20 SINGLE, DOUBLE SUB BASE

(SIE200 Solenoid & Pneumatic Valve Use Sub Base)

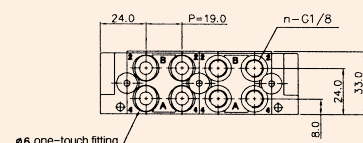
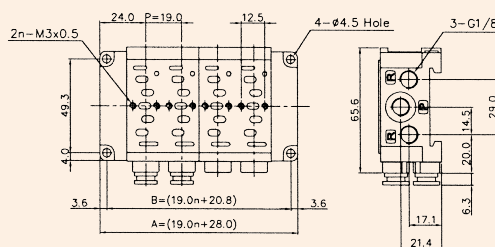


Blanking Plate
Manifold Gasket

Single Station Sub Base Dimension



Double Modular Sub Base Dimension



DOUBLE MODULAR SUB BASE DIMENSION

ITEM	n	2	4	6	8	10
B		58.8	96.8	134.8	172.8	210.8
A		66.0	104.0	142.0	180.0	218.0

Ordering Code

SIB20-BLK Blanking Plate (Material: STS304)

Manifold Gasket (Material: NBR)

Ordering Code

SIB21-E End Cover, 1/8 (Material: Al)

Ordering Code

SIB20-EB End Blanking Cover (Material: Al)

Ordering Code

SIB21-DB Double Modular Sub Base, 1/8 (Material: Al)

Ordering Code

SIB20-DC6 Double Modular Sub Base, #6 one-touch fitting (Material: Al)