

SIV400

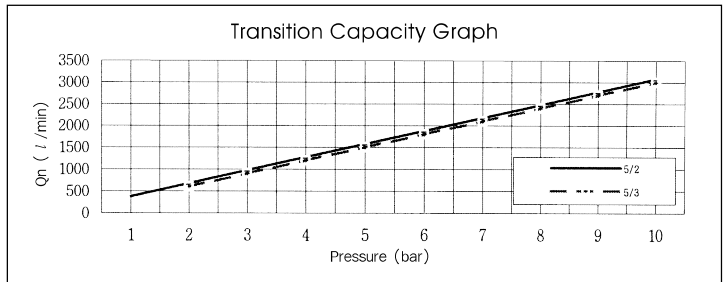
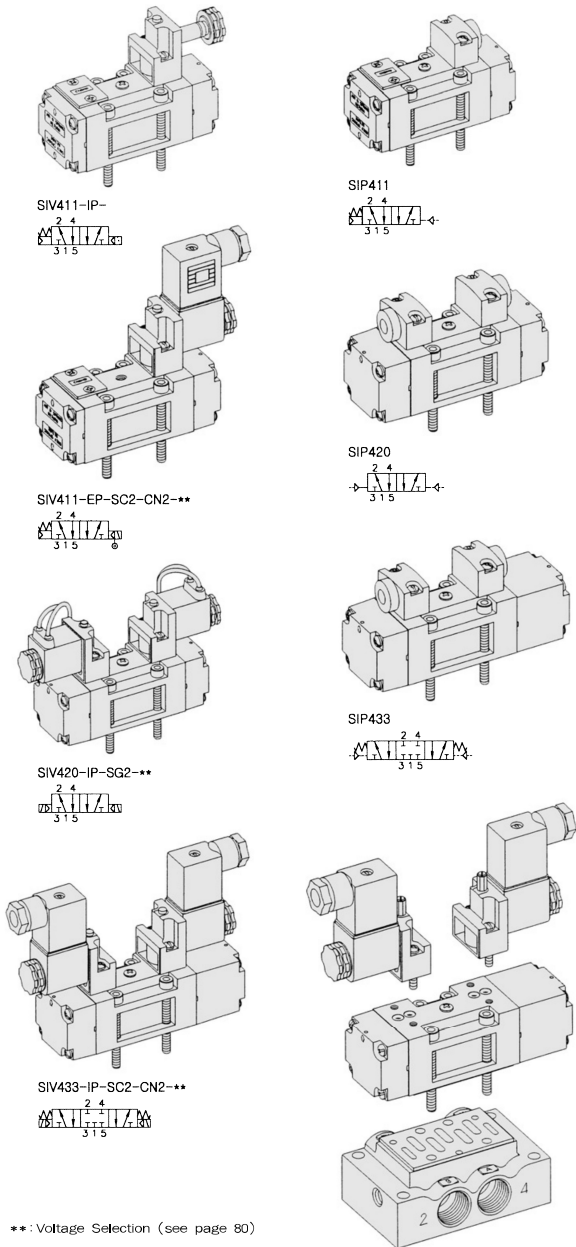
ISO-1

Solenoid / Pneumatic Valves

- 5/2, 5/3
- 40mm Body Width
- 30mm CNOMO pilot
- Sub-Base Mounting Type
- Transition Flow 1600ℓ/min (5bar)

SPECIFICATION

| ITEM | SERIES | SOLENOID, PNEUMATIC | |
|------------------------------------------|--------|---------------------------------------------|-------------------|
| | | FUNCTION | |
| | | 5 Port 2 Position | 5 Port 3 Position |
| Fluids | | Compressed Air & Inert Gases | |
| Pressure(bar) | | 1.5~10.0 | 2.0~10.0 |
| Eff. Section Area(mm ²)-5bar | | 30.0 | 25.0 |
| Ambient & Fluid Temp. | | 5~60°C (41~140°F) | |
| Response Time(5bar) | | 30ms or Less | 40ms or Less |
| Max. Working Frequency | | 3c/sec | 1c/sec |
| Lubrication | | Not Required(Use ISO VG32#) | |
| Manual Override | | Push Button(Standard), Lever Lock(Optional) | |
| Coil Insulation Class | | F-Class or Equivalent | |
| Permissible Voltage Variation | | ±10% of Rated Voltage | |
| Off Min. Residual Voltage | | AC:20% or Less / DC:10% or Less | |
| Power Consumption | | Holding-AC:5.5VA(60Hz) / DC:2.5W | |



- ### The Material of Parts
- Valve Body : Die-Cast Aluminium
 - Spool : Aluminium
 - Seals : NBR
 - Spring : Stainless
 - Cap : Zinc Pressure Die-Cast
 - Pilot Parts : Glass Filled Nylon
 - Armature : Stainless Steel
 - Armature Seals : Viton

* The specification on each item can be amended without any prenotice to improve a performance.
 * The specification on each item can be different from actual specification.

***: Voltage Selection (see page 80)

ORDERING NO.

SIV4 1 1 - I P - SC2 - CN2 - A2

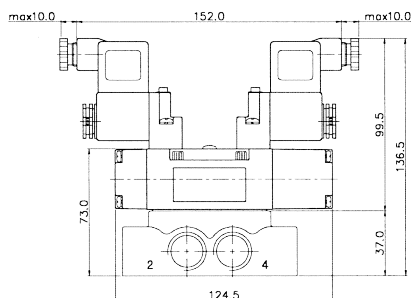
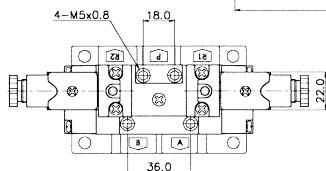
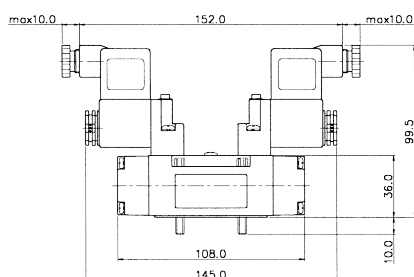
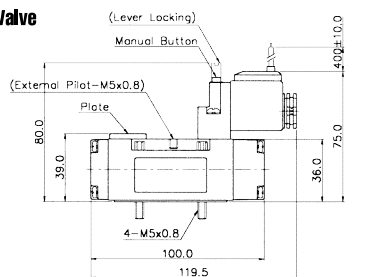
| Valve Series | Function | Return Method | Int/Ext. Pilot | Manual Operator | Solenoid Coil Type | Connector Type | Voltage |
|---------------------------|----------|---------------------|----------------|-----------------|--------------------|-------------------------------|---------------------------------------|
| SIV4 : Solenoid Valve | 1 | 5/2 Single | 0 | None | 0 | None | 0 |
| | 2 | 5/2 Double | 1 | Internal Pilot | SC2 | 3 Pin Connector Coil | A2 |
| | 3 | 5/3 Closed Center | 1 | External Pilot | P | Normal Connector | A2 |
| | 4 | 5/3 Open Center | 2 | | L | Connector With LED | A1 |
| SIP4 : Pneumatic Valve | 4 | 5/3 Open Center | 3 | | SG2 | Grommet/Flying Leads | A4 |
| | 5 | 5/3 Pressure Center | 3 | | SD2 | Grommet/Flying Leads With LED | D4 |
| | | | | | | CZ2 | Connector With LED & Surge Suppressor |

5Port 2Position Solenoid Valve

Single Solenoid
SIV411-IP-SD2-***

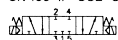


External Pilot
SIV411-EP-SD2-***

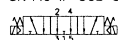


5Port 3Position Solenoid Valve

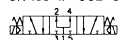
Closed Center
SIV433-IP-SC2-CN2-***



Exhaust Center
SIV443-IP-SC2-CN2-***

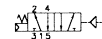


Pressure Center
SIV453-IP-SC2-CN2-***

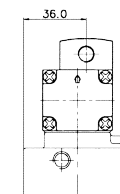
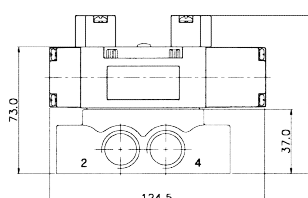
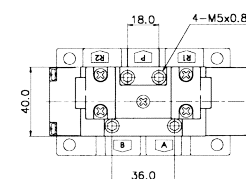
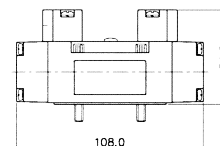
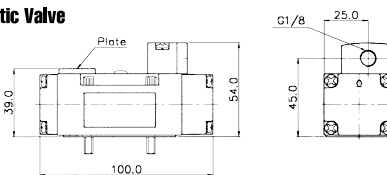
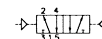


5Port 2Position Pneumatic Valve

Single Pneumatic
SIP411

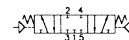


Double Pneumatic
SIP420

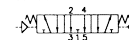


5Port 3Position Pneumatic Valve

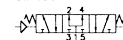
Closed Center
SIP433



Exhaust Center
SIP443



Pressure Center
SIP453



Sub Base Ordering Code

| SIB4 1 - S | | |
|-----------------------|---------------|------------------------------------------------|
| Base Series | Port & Thread | Function |
| SIB4 | 0 None | S Single Station Sub Base, Without Pilot Ports |
| SIV400 Solenoid Valve | 1 G 1/4 | SP Single Station Sub Base, With Pilot Ports |
| | 2 G 3/8 | |
| | 3 G 1/2 | |
| | 6 NPT 1/4 | |
| | 7 NPT 3/8 | |
| | 8 NPT 1/2 | |

SIB40 SINGLE SUB BASE

(SIV400 Solenoid & Pneumatic Valve Use Sub Base)

Single Station Sub Base Dimension

