

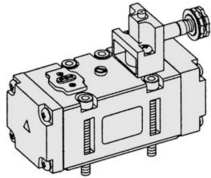
SIV500

ISO-2
Solenoid / Pneumatic Valves

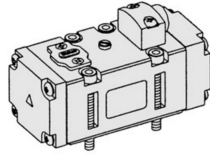
- 5/2, 5/3
- 50mm Body Width
- 30mm CNOMO PILOT
- Sub-Base Mounting Type
- Transition Flow 3500ℓ/min (5bar)

SPECIFICATION

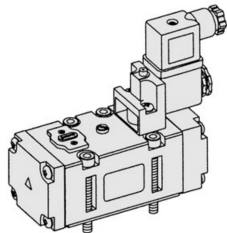
ITEM	SERIES	SOLENOID, PNEUMATIC	
		FUNCTION	
		5 Port 2 Position	5 Port 3 Position
Fluids		Compressed Air & Inert Gases	
Pressure(bar)		1.5~10.0	2.0~10.0
Eff. Sectional Area(mm ²)-5bar		65.0	50.0
Ambient & Fluid Temp.		5~60°C (41~140°F)	
Response Time(5bar)		35ms or Less	45ms or Less
Max. Working Frequency		3c/sec	1c/sec
Lubrication		Not Required(Use ISO VG32#)	
Manual Override		Push Button(Standard), Lever Lock(Optional)	
Coil Insulation Class		F-Class or Equivalent	
Permissible Voltage Variation		±10% of Rated Voltage	
Off Min. Residual Voltage		AC:20% or Less / DC:10% or Less	
Power Consumption		Holding-AC:5.5VA(60Hz) / DC:2.5W	



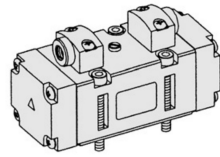
SIV511-IP-
2 4
3 1 5



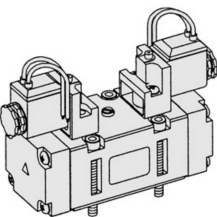
SIP511
2 4
3 1 5



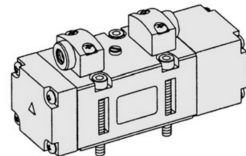
SIV511-EP-SC2-CN2-***
2 4
3 1 5



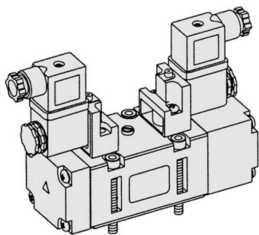
SIP520
2 4
3 1 5



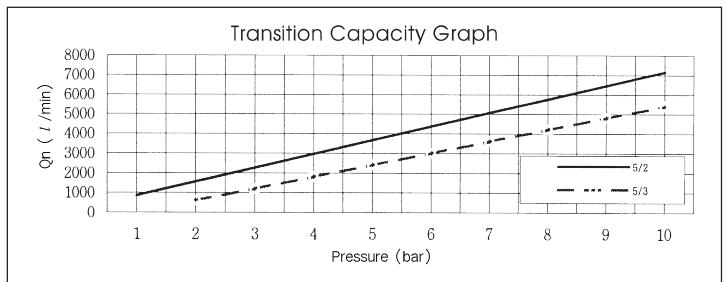
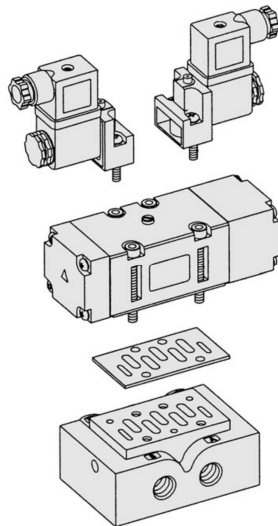
SIV520-IP-SD2-***
2 4
3 1 5



SIP533
2 4
3 1 5



SIV533-IP-SC2-CN2-***
2 4
3 1 5



- ### The Material of Parts
- Valve Body : Die-Cast Aluminium
 - Spool : Aluminium
 - Seals : NBR
 - Spring : Stainless
 - Cap : Zinc Pressure Die-Cast
 - Pilot Parts : Glass Filled Nylon
 - Armature : Stainless Steel
 - Armature Seals : Viton

* The specification on each item can be amended without any prenotice to improve a performance.
* The specification on each item can be different from actual specification.

***: Voltage Selection (see page 80)

ORDERING NO.

SIV5 1 1 - I P - SC2 - CN2 - A2

Valve Series	Function	Return Method	Int/Ext. Pilot	Manual Operator	Solenoid Coil Type	Connector Type	Voltage
SIV5 : Solenoid Valve	1	5/2 Single	0	None	0	None	0
	2	5/2 Double	1	Air + Spring	SC2	3 Pin Connector Coil	A2
	3	5/3 Closed Center	2	Air	SG2	Grommet/Flying Leads	A1
	4	5/3 Open Center	3	Spring	SD2	Grommet/Flying Leads With LED	A4
SIP5 : Pneumatic Valve	5	5/3 Pressure Center				CZ2	DC 24V
						& Surge Suppressor	D4
							D2

5Port 2Position Solenoid Valve

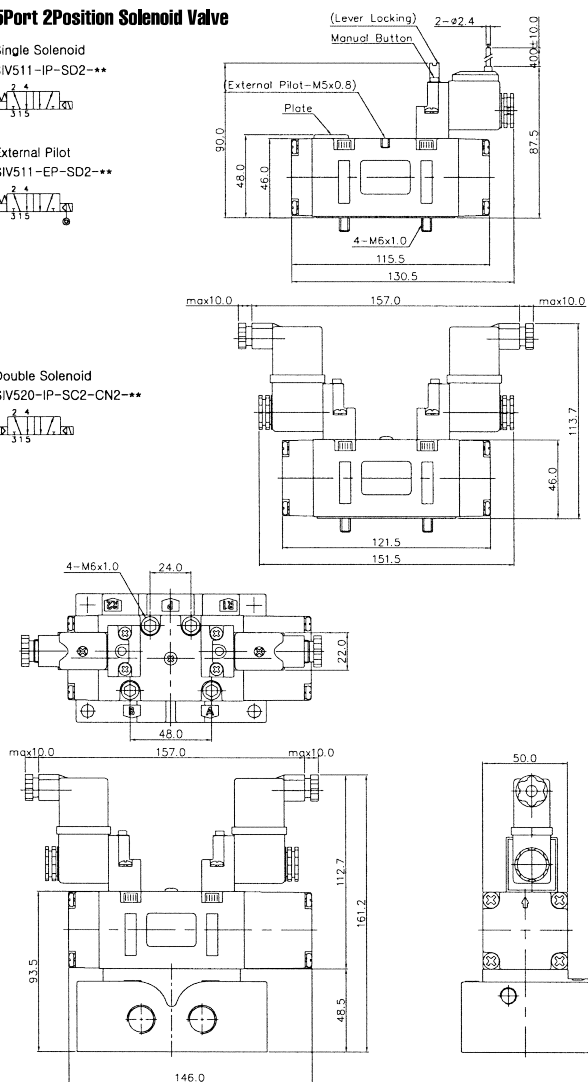
Single Solenoid
SIV511-IP-SD2-***



External Pilot
SIV511-EP-SD2-***

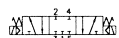


Double Solenoid
SIV520-IP-SC2-CN2-***



5Port 3Position Solenoid Valve

Closed Center
SIV533-IP-SC2-CN2-***



Exhaust Center
SIV543-IP-SC2-CN2-***



Pressure Center
SIV553-IP-SC2-CN2-***

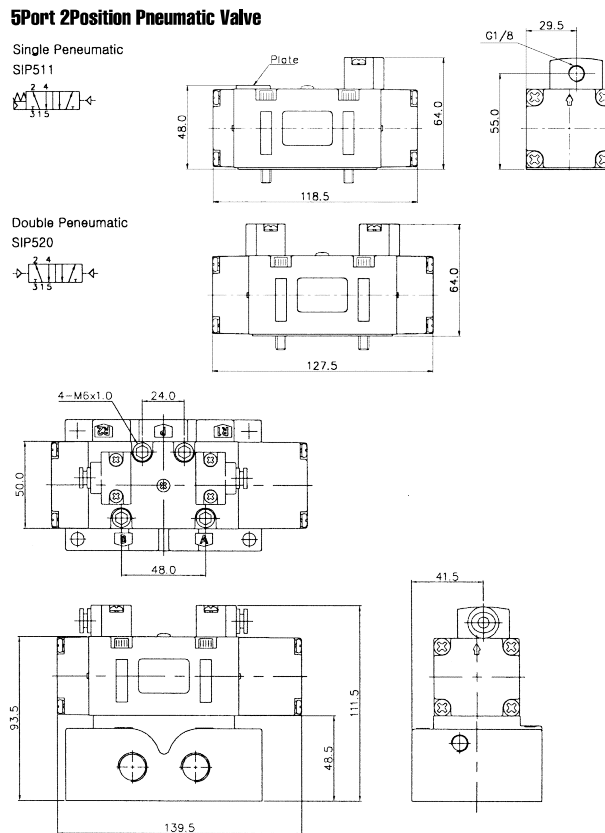


5Port 2Position Pneumatic Valve

Single Pneumatic
SIP511

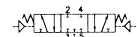


Double Pneumatic
SIP520

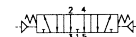


5Port 3Position Pneumatic Valve

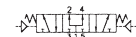
Closed Center
SIP533



Exhaust Center
SIP543



Pressure Center
SIP553



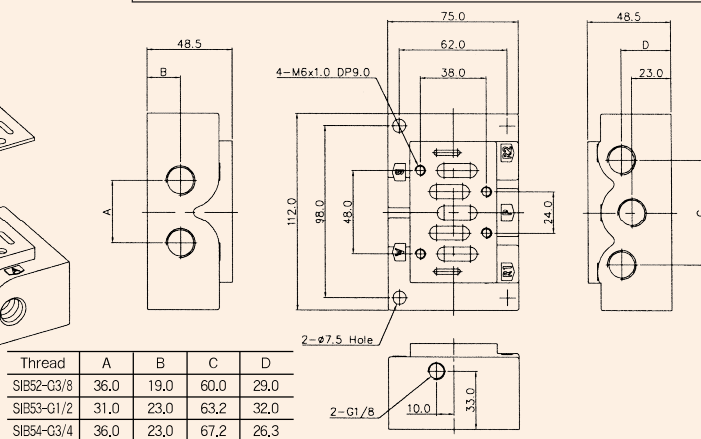
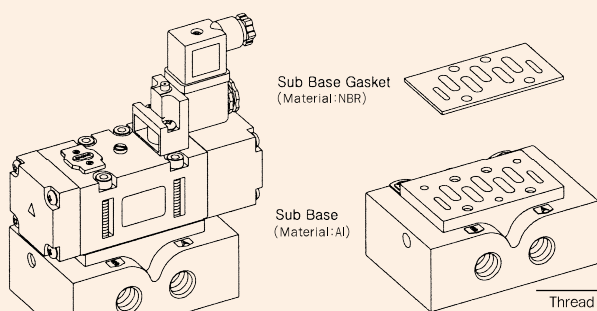
Sub Base Ordering Code

SIB5			1		S	
Sub Base Series	Port & Thread		Function			
SIB5	0	None	S	Single Station Sub Base, Without Pilot Ports		
SIV500 Solenoid Valve	2	G 3/8				
	3	G 1/2	SP	Single Station Sub Base, With Pilot Ports		
	4	G 3/4				
	7	NPT 3/8				
	8	NPT 1/2				
	9	NPT 3/4				

SIB50 SINGLE SUB BASE

(SIV500 Solenoid & Pneumatic Valve Use Sub Base)

Single Station Sub Base Dimension



Thread	A	B	C	D
SIB52-G3/8	36.0	19.0	60.0	29.0
SIB53-G1/2	31.0	23.0	63.2	32.0
SIB54-G3/4	36.0	23.0	67.2	26.3