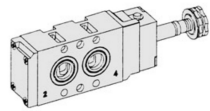


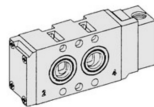
SN3000. 1/4

NAMUR Interface
Solenoid / Pneumatic Valves

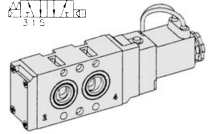
- 5/2, 5/3 -1/4
- 23mm Body Width
- Transition Flow 1000ℓ/min (5bar)



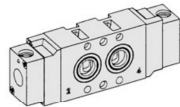
SN3101-IP-



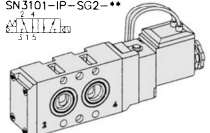
SNP3101



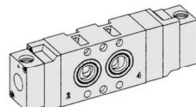
SN3101-IP-SG2-**-



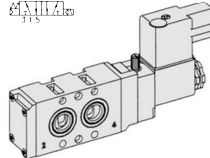
SNP3200



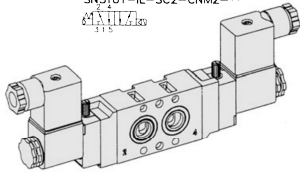
SN3101-IP-SD2-**-



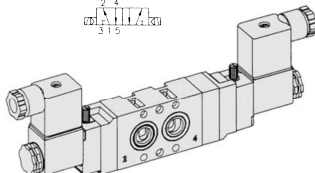
SNP3303



SN3101-IL-SC2-CN2-**-

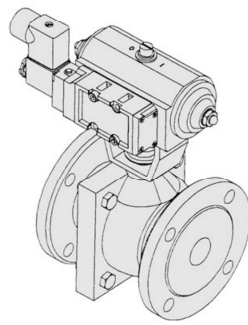
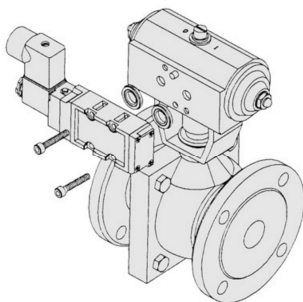


SN3200-IL-SC2-CN2-**-



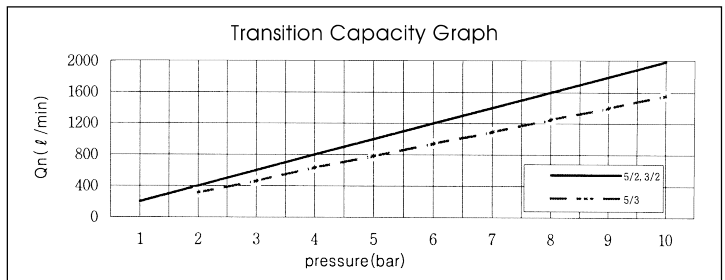
SN3303-IL-SC2-CN2-**-

** : Voltage Selection (see page 80)

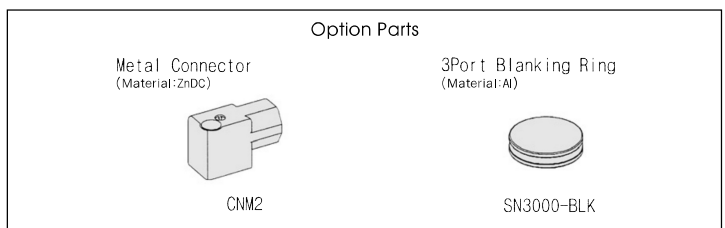


SPECIFICATION

ITEM	SERIES	SOLENOID, PNEUMATIC	
		FUNCTION	5 Port 2 Position
Fluids		Compressed Air & Inert Gases	
Pressure(bar)		1.5~10.0	2.0~10.0
Eff. Sectional Area(mm ²)-5bar		18.0	12.0
Ambient & Fluid Temp.		5~60°C (41~140°F)	
Response Time(5bar)		30ms or Less	40ms or Less
Max. Working Frequency		5c/sec	3c/sec
Lubrication		Not Required(Use ISO VG32#)	
Manual Override		Push Button(Standard), Lever Lock(Optional)	
Coil Insulation Class		F-Class or Equivalent	
Permissible Voltage Variation		±10% of Rated Voltage	
Off Min. Residual Voltage		AC:20% or Less / DC:10% or Less	
Power Consumption		Holding-AC:5.5VA(60Hz) / DC:2.5W	



- ### The Material of Parts
- Valve Body : Die-Cast Aluminium
 - Spool : Aluminium
 - Seals : NBR
 - Spring : Stainless
 - Cap : Zinc Pressure Die-Cast
 - Pilot Parts : Glass Filled Nylon
 - Armature : Stainless Steel
 - Armature Seals : Viton

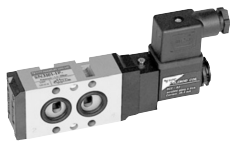
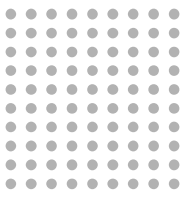


* The specification on each item can be amended without any prenotice to improve a performance.
* The specification on each item can be different from actual specification.

ORDERING NO.

SN3 1 0 1 - I P - SC2 - CN2 - A2

Valve Series	Function	Port Size & Thread	Return Method	Int/Ext. Pilot	Manual Operator	Solenoid Coil Type	Connector Type	Voltage
SN3 : Solenoid Valve	1 5/2 Single	0 G 1/4	0 None	I Internal Pilot	0 None	0 None	0 None	0 None
	2 5/2 Double	1 NPT 1/4	1 Air + Spring		P Push	SC2 3 Pin Connector Coil	CN2 Normal Connector	A2 AC 220V
	3 5/3 Closed Center		2 Air		Non-Locking	SC2 Grommet/Flying Leads	CD2 Connector With LED	A1 AC 110V
	4 5/3 Open Center		3 Spring		L Lever Locking	SD2 Grommet/Flying Leads With LED	CZ2 Connector With LED & Surge Suppressor	A4 AC 24V
SNP3 : Pneumatic Valve	5 5/3 Pressure Center					CNM2 Metal Connector	D4 DC 24V	D2 DC 12V
						CDM2 Metal Connector With LED		
						CM2 Metal Connector With LED & Surge Suppressor		



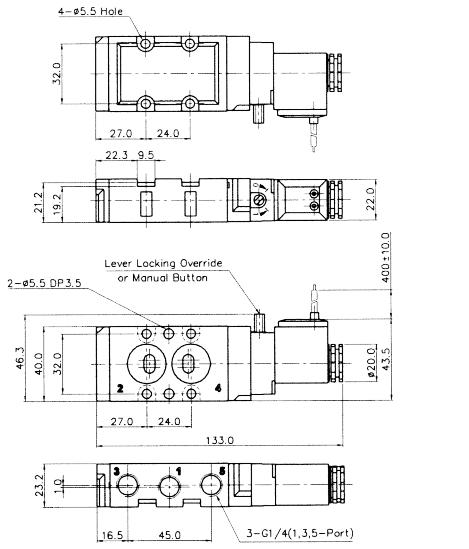
Namur

Port Thread 1/4

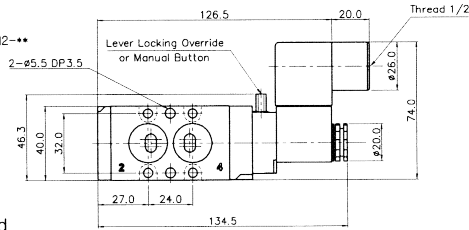
Solenoid & Pilot Actuated Spool Valves

5Port 2Position Solenoid Valve

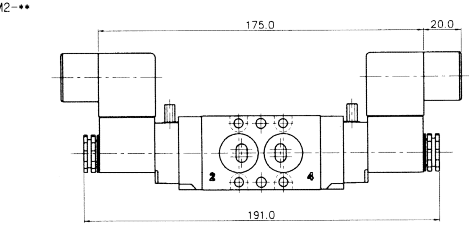
Single Solenoid
SN3101-IL-SD2-**



SN3101-IL-SC2-CNM2-**



Double Solenoid
SN3200-IL-SC2-CNM2-**



5Port 3Position Solenoid Valve

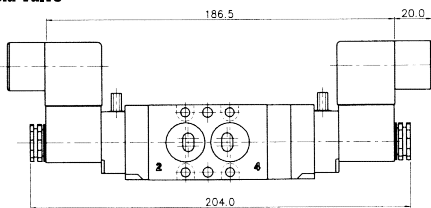
Closed Center
SN3303-IL-SC2-CNM2-**



Exhaust Center
SN3403-IL-SC2-CNM2-**

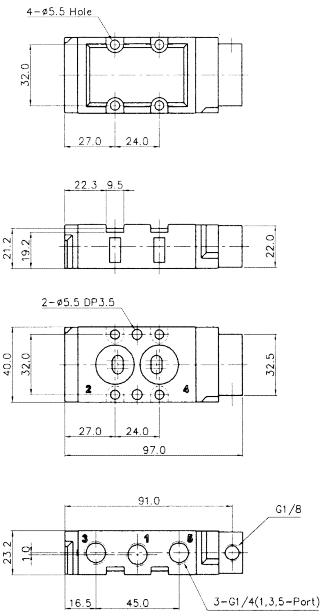


Pressure Center
SN3503-IL-SC2-CNM2-**

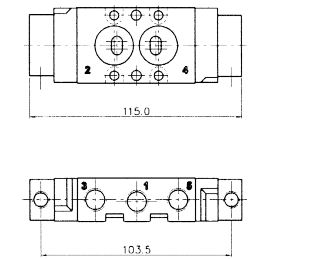


5Port 2Position Pneumatic Valve

Single Pneumatic
SNP3101

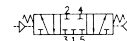


Double Pneumatic
SNP3200



5Port 3Position Pneumatic Valve

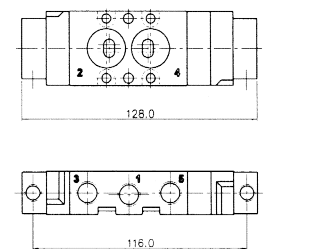
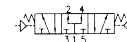
Closed Center
SNP3303



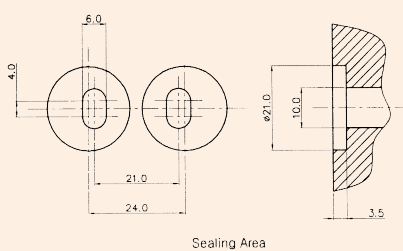
Exhaust Center
SNP3403



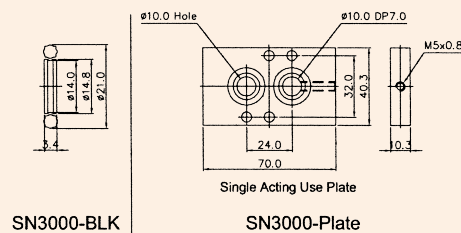
Pressure Center
SNP3503



Sealing Part Dimension



3-Port Blanking Part (Material : Al)



Metal Connector (Material : ZnDC)

