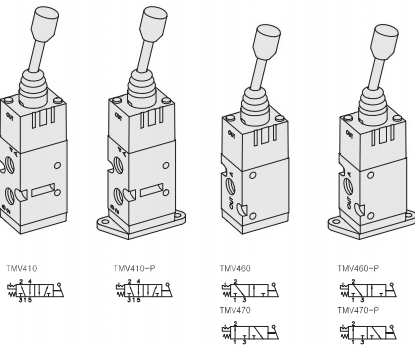
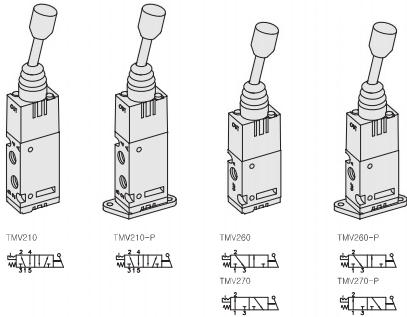


TMV Series

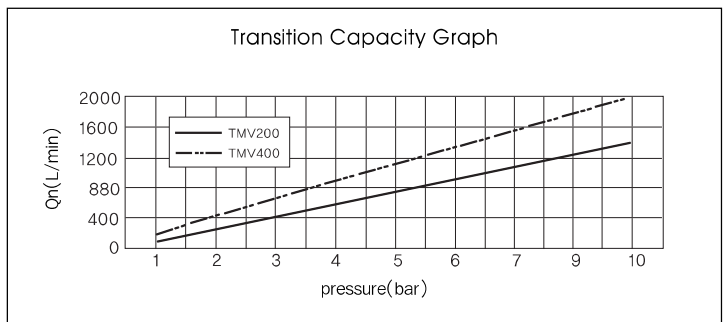
Toggle Lever operated Mechanically Actuated Spool Valves

- 5/2, 3/2 - 1/8, 1/4
- Direct Operation Type
- Simple Operation
- Manifold Mounting Type



SPECIFICATION

| ITEM | SERIES | TMV200 | TMV400 |
|--|--------|------------------------------|--------|
| FUNCTION | | 5/2, 3/2-Way | |
| Fluids | | Compressed Air & Inert Gases | |
| Port Size | | 1/8 | 1/4 |
| Pressure(bar) | | 2.0~10.0 | 0~8.0 |
| Eff. Sectional Area(mm ²)-5bar | | 9.0 | 18.0 |
| Ambient & Fluid Temp. | | 5~60°C (41~140°F) | |
| Lubrication | | Not Required(Use ISO VG32#) | |



- The Material of Parts
- Valve Body : Die-Cast Aluminium
 - Cap : Zinc Pressure Die-Cast
 - Spool : Aluminium
 - Seals : NBR
 - Spring : Stainless
 - Lever Parts : Steel, NBR, Aluminium

Standing Plate (Material : SCP1)

Ordering Code
TMV-P

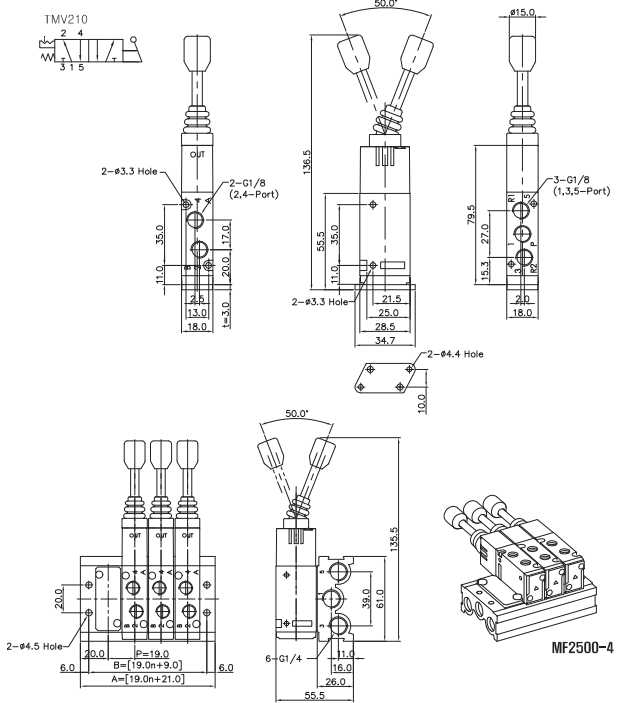
* The specification on each item can be amended without any prenotice to improve a performance.
* The specification on each item can be different from actual specification.

ORDERING NO.

TMV2 - 1 - 0 - P

| Valve Series | Function | Port Size & Thread | Plate | | | | | | | | | | | | |
|--------------------------|---|--------------------|------------|---|---------------------|---|-------------------|--|---|---|---|-----|---|---|----------------|
| TMV2 : 1/8-Port. Body | <table border="1" style="width: 100%;"> <tr><td>1</td><td>5/2 Single</td></tr> <tr><td>6</td><td>3/2 Normally Closed</td></tr> <tr><td>7</td><td>3/2 Normally Open</td></tr> </table> | 1 | 5/2 Single | 6 | 3/2 Normally Closed | 7 | 3/2 Normally Open | <table border="1" style="width: 100%;"> <tr><td>0</td><td>G</td></tr> <tr><td>1</td><td>NPT</td></tr> </table> | 0 | G | 1 | NPT | <table border="1" style="width: 100%;"> <tr><td>P</td><td>Standing Plate</td></tr> </table> | P | Standing Plate |
| 1 | 5/2 Single | | | | | | | | | | | | | | |
| 6 | 3/2 Normally Closed | | | | | | | | | | | | | | |
| 7 | 3/2 Normally Open | | | | | | | | | | | | | | |
| 0 | G | | | | | | | | | | | | | | |
| 1 | NPT | | | | | | | | | | | | | | |
| P | Standing Plate | | | | | | | | | | | | | | |
| TMV4 : 1/4-Port. Body | | | | | | | | | | | | | | | |

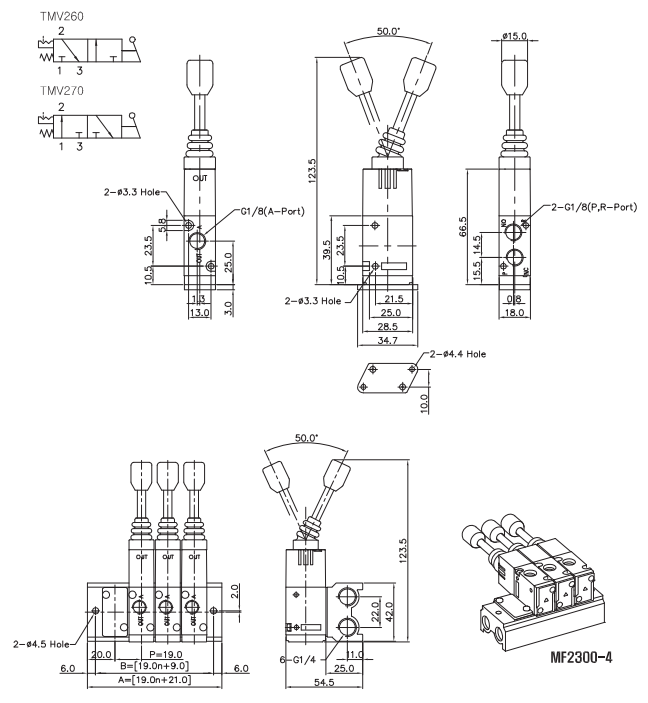
5/2-Way, Toggle Lever Manually Actuated Valve Thread-G1/8



5 PORT MANIFOLD BLOCK DIMENSION n=STATION

| ITEM | n | 2 | 4 | 6 | 8 | 10 | 12 | 14 |
|------|---|------|------|-------|-------|-------|-------|-------|
| B | | 47.0 | 85.0 | 123.0 | 161.0 | 199.0 | 237.0 | 275.0 |
| A | | 59.0 | 97.0 | 135.0 | 173.0 | 211.0 | 249.0 | 287.0 |

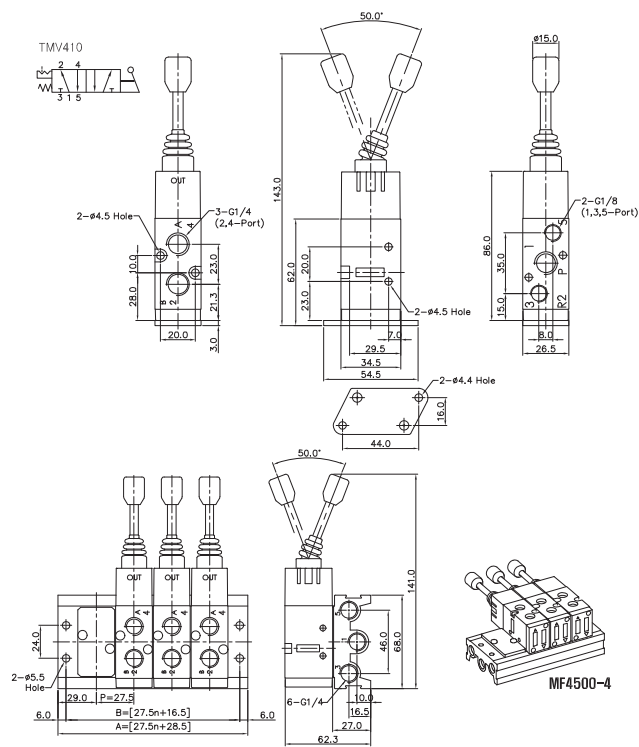
3/2-Way, Toggle Lever Manually Actuated Valve Thread-G1/8



3 PORT MANIFOLD BLOCK DIMENSION n=STATION

| ITEM | n | 2 | 4 | 6 | 8 | 10 | 12 | 14 |
|------|---|------|------|-------|-------|-------|-------|-------|
| B | | 47.0 | 85.0 | 123.0 | 161.0 | 199.0 | 237.0 | 275.0 |
| A | | 59.0 | 97.0 | 135.0 | 173.0 | 211.0 | 249.0 | 287.0 |

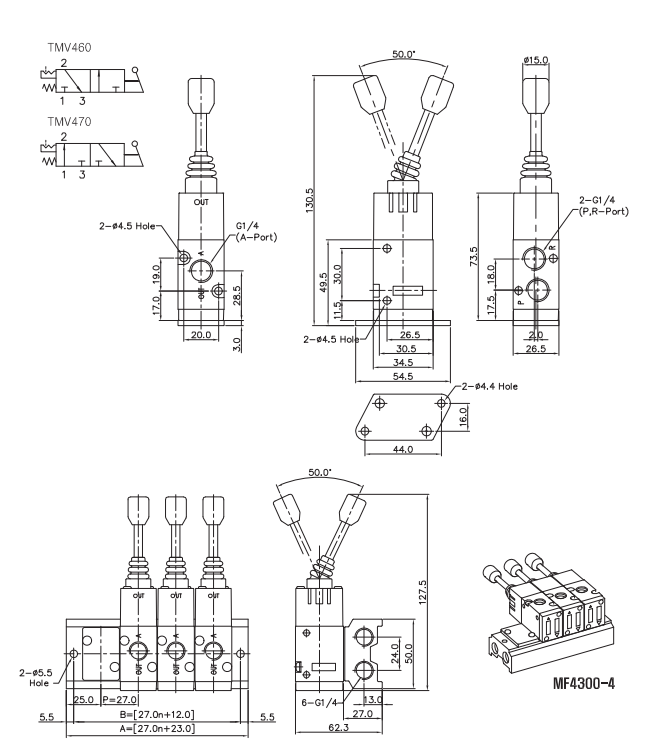
5/2-Way, Toggle Lever Manually Actuated Valve Thread-G1/4



5 PORT MANIFOLD BLOCK DIMENSION n=STATION

| ITEM | n | 2 | 4 | 6 | 8 | 10 | 12 | 14 |
|------|---|------|-------|-------|-------|-------|-------|-------|
| B | | 71.5 | 126.5 | 181.5 | 236.5 | 291.5 | 346.5 | 401.5 |
| A | | 83.5 | 138.5 | 193.5 | 248.5 | 303.5 | 358.5 | 413.5 |

3/2-Way, Toggle Lever Manually Actuated Valve Thread-G1/4



3 PORT MANIFOLD BLOCK DIMENSION n=STATION

| ITEM | n | 2 | 4 | 6 | 8 | 10 | 12 | 14 |
|------|---|------|-------|-------|-------|-------|-------|-------|
| B | | 65.0 | 120.0 | 174.0 | 228.0 | 282.0 | 336.0 | 390.0 |
| A | | 77.0 | 131.0 | 185.0 | 239.0 | 293.0 | 347.0 | 401.0 |