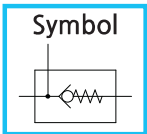
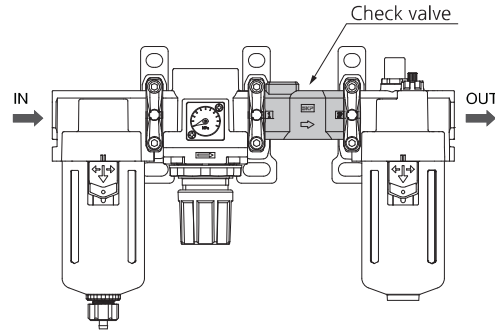


# Accessory

## Check Valve(SACM200~400)



1. A check valve with intermediate air release port can be easily installed to prevent a backflow of lubricant when redirecting the air flow and releasing the air on the outlet side of the regulator.
2. Be sure to use check valves when redirecting the air flow on the inlet side of the lubricator. Threads for IN and OUT ports are not machined.



### How to order

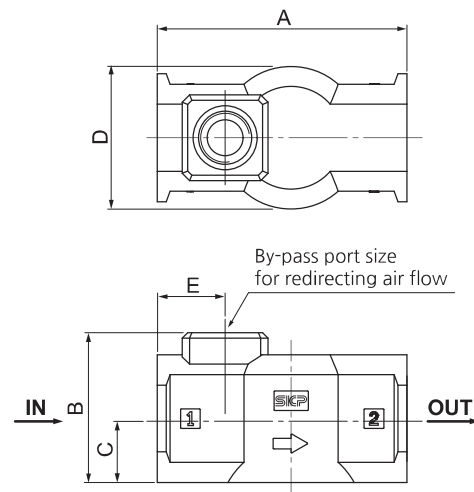
- SACM 4 00 - 02**
- ① Check valve
  - ② Body size
    - 2 - 1/4
    - 3 - 3/8
    - 4 - 1/2
  - ③ Thread type
    - Nil - Rc(PT)
    - N - NPT
    - G - G(PF)
  - ④ By-pass port size

| Symbol | Size | Body size |   |   |
|--------|------|-----------|---|---|
|        |      | 2         | 3 | 4 |
| 01     | 1/8  | ●         | ● |   |
| 02     | 1/4  | ●         | ● | ● |
| 03     | 3/8  |           |   | ● |

### Specification

|                         |                         |
|-------------------------|-------------------------|
| Fluid                   | Air                     |
| Proof pressure          | 15bar (1.5MPa)          |
| Max. operating pressure | 10bar (1MPa)            |
| Ambient and fluid temp. | -5 ~ 60°C (No freezing) |

### Dimension(mm)



| Model   | By-pass port size | A  | B    | C    | D  | E    | Applicable model                         |
|---------|-------------------|----|------|------|----|------|--|
| SACM200 | 1/8, 1/4          | 40 | 30.5 | 10.5 | 27 | 13.5 | SAU200, SAU210~260                       |
| SACM300 | 1/8, 1/4          | 53 | 35.5 | 15   | 30 | 15   | SAU300, SAU310~360<br>SAU400, SAU410~460 |
| SACM400 | 1/4, 3/8          | 70 | 42   | 17.9 | 40 | 19   | SAU600, SAU610~620                       |

Note : A check valve cannot be mounted on the SAU400-06.